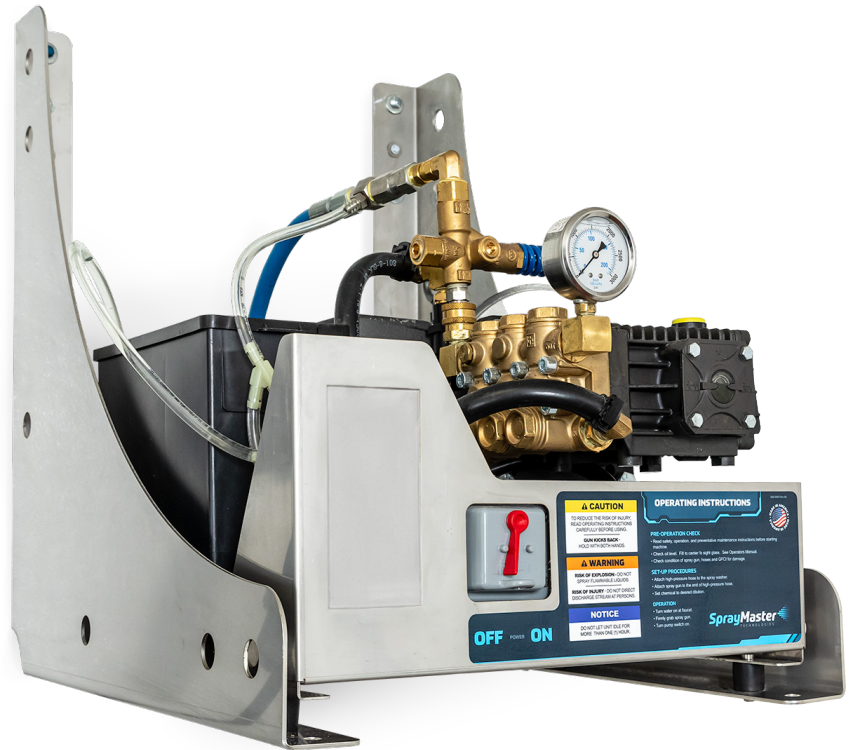


300-5066

POWER CLEAN 5.0C

FEATURES:

- » 5HP Industrial Motor, Totally-Enclosed, Fan-Cooled
- » 3.6 GPM, 3 Cylinder, Stainless Steel Lined, Ceramic Plunger Pump
- » Master Control Panel w/ LED Readout for Current Status & Troubleshooting
- » SSR w/ Integrated LED for Basic System Status
- » Dual Chemical Injection System w/ Stainless Steel Injectors and Post Pump Injection
- » Anti-Backflow/Anti-Siphon Protection w/ 1" Air Gap via Water Level Float Tank
- » Low Water Shut-Off protection
- » Thermal Limit Switch for Over Temp Protection (150° Max Water Temp)
- » Bleeder Valve Assembly
- » Includes Water Filter Assembly, Replacement Filter Cartridge, and Oil
- » Unit Comes Ready to Wire. Does Not include Power Cord.
- » Shipping Weight: 315 lbs



300-5066 Power Clean 5.0c, 3.6 GPM @ 2000 PSI

Power Rating: 240vAC/30A Dedicated Circuit for each unit

**Shown with optional Wall Mounting Brackets*

(800) 548-3373

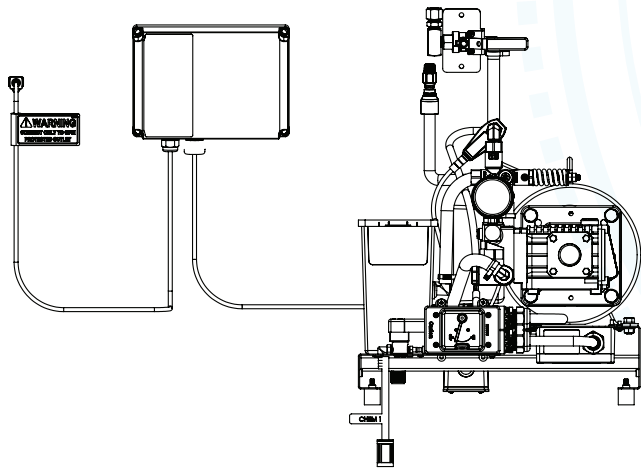
www.spraymastertech.com

A brand line of
Assembled Products Corporation

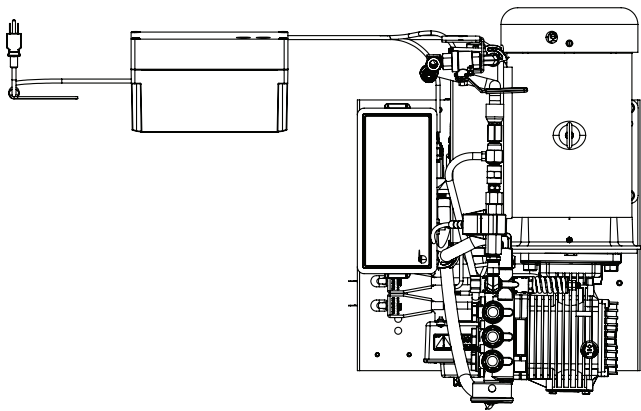
115 E Linden • Rogers, Arkansas 72756 USA | Office: (479) 636-5776 • Fax: (479) 636-3245



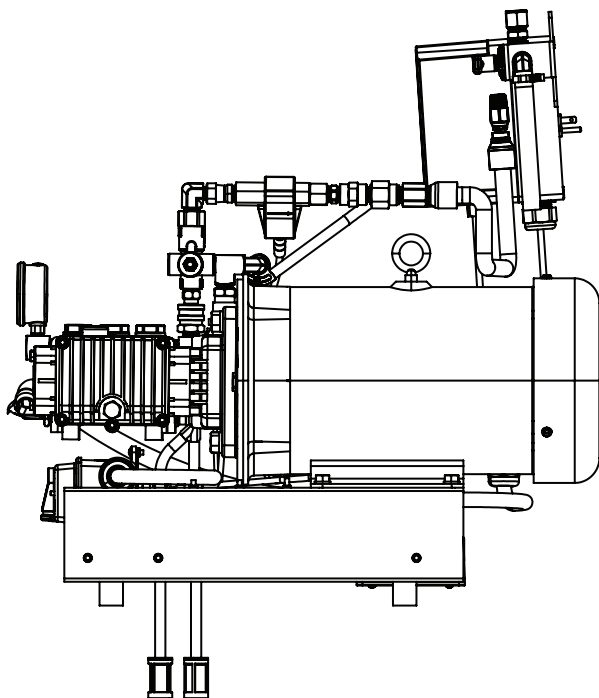
FRONT VIEW



TOP VIEW



SIDE VIEW



EQUIPMENT SPECS:

CLEARANCES

- » Left Side 10"
- » Right Side 10"
- » Overhead 21"
- » Above Finished Floor 36"
- » Front 16"

PLUMBING

3/4" / 2cm Hose Bib with 5 gpm / .14Lpm @ Min. 30 to 80 psi / 20.6 to 5.5 bars. If Warm Water is required, 150° F / 65.5° C Max.

ELECTRICAL

- » One (1) 240v 60Hz, Single Phase 30A, GFCI Protected 'Dedicated Circuit'
- » One (1) 120v 60Hz, Single Phase 15A, GFCI Protected Nema 5-15R Outlet

CHEMICAL DILUTION

Dual Chemical Metering Valves accurately adjust chemical metering to your chemical specifications.

INSTALLATION SPECS:

ELECTRICAL

- » One (1) 240v 60Hz, Single Phase 30A, GFCI Protected 'Dedicated Circuit'
- » One (1) 120v 60Hz, Single Phase 15A, GFCI Protected Nema 5-15R Outlet

WATER

One (1) water outlet with standard 3/4" / 1.9cm hose bib with shut-off valve. A pressure gauge in the water line can be helpful although it is not mandatory. A minimum of 5 gal / 19L per minute and a line pressure not less than 30 psi / 20.6 bars, and not more than 80psi / 5.5 bars, is required.

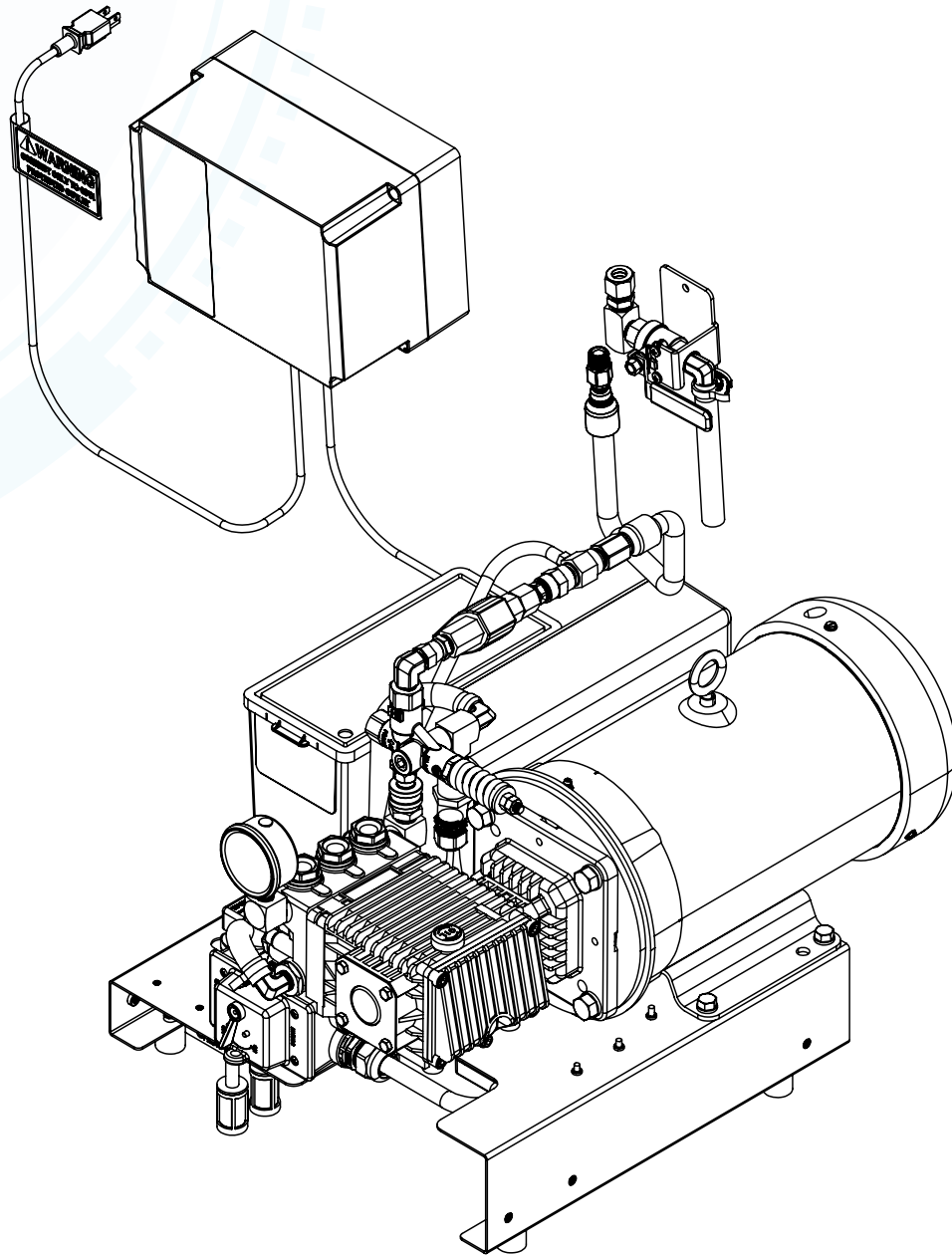
(Option: if warm water outlet is needed - 150° F / 65.5° C MAX)

LOCATION

Heated utility room or closet with ventilation. Minimum 24" / 60.96cm clearance above unit is required. The unit can be serviced without removing it from the wall.

GENERAL RECOMMENDATIONS

Floor drains are essential in new facilities to receive the greatest utilization and maximum efficiency of your **Spray Master** pressure washer. Materials and wall coverings which can be cleaned with pressurized water are desirable. Locate electrical outlets above washing areas.



*REPRESENTED WITHOUT COVER

SYSTEM REQUIREMENTS:

- » One (1) 240v 60Hz, Single Phase 30A, GFCI Protected 'Dedicated Circuit'
- » One (1) 120v 60Hz, Single Phase 15A, GFCI Protected Nema 5-15R Outlet
- » 3/4" Backing required in studded walls

NOTE: Electrical, Water, and Backing are not supplied by Spray Master.

AMBIENT WATER SUPPLY

Recommended Temp: Cold water, 5 gpm @ minimum (30-80 psi) with a maximum of 80 PSI with 3/4" Hose Bib (*one for each unit*)

Maximum Temp: 150° F / 65.5 C, 5 gpm @ minimum (30-80 psi) with a maximum of 80 psi with a 3/4" Hose Bib (*one for each unit*)



www.spraymastertech.com