

**NEW AGE**  
INDUSTRIAL  
**NEW AGE**

**Aluminum Solutions**

Made in the USA 

**Work  
Tables**



[NewAgeIndustrial.com](http://NewAgeIndustrial.com)

# Standard Aluminum Tables/Workstations

- Lighter and easier to maneuver.

**New Age Work Tables** are designed for multiple uses within multiple industries. Our heavy duty table frames are made from aluminum, reducing the weight of the product by  $\frac{1}{3}$  when compared to traditional steel tables. Our tables consist of an all-aluminum frame, with either a stainless steel or poly top for easy cleaning.

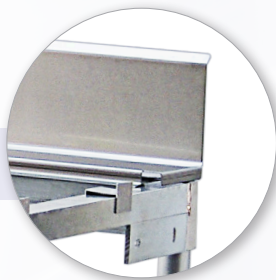
Both top options are easily replaced. Poly tops are secured with aluminum clips

Several options are available... You can even make it mobile with the addition of four, 5" braking casters. Design one to meet your individual needs.



Poly Top  
Stainless Steel Backsplash

Optional Stainless Steel Backsplash



Heavy Duty  
Aluminum Table Frame

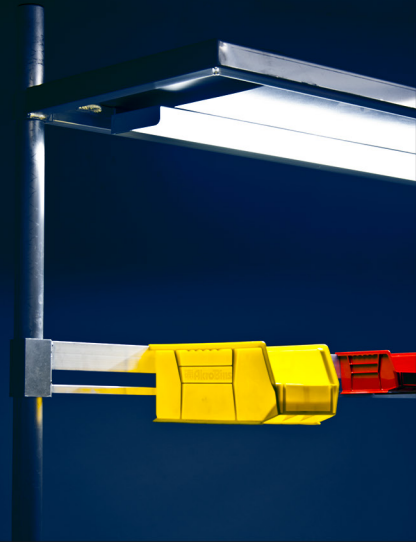


Stainless Steel Top and  
Optional Aluminum Undershelf.

Our Work Tables are constructed of heavy duty, lightweight aluminum; Minimizing clean-up time and **guaranteed to never rust or corrode.**

# Take it to the **NEXT LEVEL** With New Age **CUSTOMIZATION.**

Take a standard item and customize it to make it fit your application.  
Add lights, a mounting bar for containers, drawer, backsplash,  
undershelf...Whatever fits your needs.



The additional ability of customization of the design and features has taken **New Age Work Tables** to a new level of innovation over standard equipment.

Standard Cantilever Overshelves provide convenient, overhead storage for smaller, lighter items that you want to keep close at hand.



DWG50569



**Drawer**  
Comes standard with the DWG50569.  
Optional for Standard Tables.



Stainless Top Table with  
Aluminum Cantilever Overshelves

**“Don’t Compromise...Customize.”**



**NEW AGE**  
INDUSTRIAL  
**NEW AGE**

NewAgeIndustrial.com | Made in the USA 



# Standard Aluminum Equipment Stands - Complete Family of Options.

**New Age Equipment Stands** are designed for multiple uses within multiple industries. All-Welded, Knocked-Down, Adjustable...There are several options to choose from. Our tables consist of an all-aluminum frame, with aluminum tops.

Several options are available... You can even make some models mobile with the addition of four, 5" braking casters. Design one to meet your individual needs.



Modular Equipment Stands  
- Standard, Adjustable



Modular Equipment Stand  
- Adjustable



### Options

- Aluminum undershelf.
- 5" stem type casters.



### Knocked Down

- Knocks down to ship in one UPS-able box.



50376

### Features

- All Welded Frame
- Removable aluminum top.
- Accommodates a full size sheet pan or tub/lug.



Take your work stations to the **NEXT LEVEL.**  
Start today by filling out a Custom Item Request Form.

