

Cantilever Shelving Guide

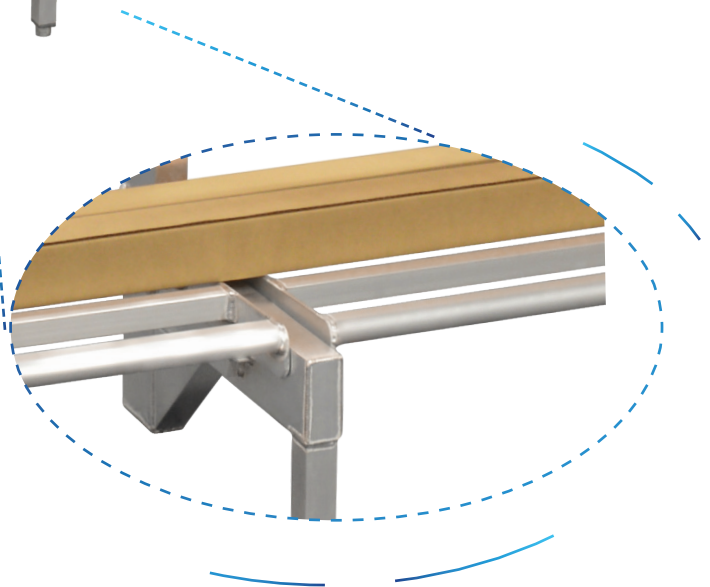


NEWAGE
INDUSTRIAL
NEWAGE

Easily store long, awkward items

Have an item too large for one shelf?

Use two...



By eliminating the need for front posts, Cantilever Shelving units offer up to 30% more storage space than units with four posts.

Line shelves up to create continuous runs for long, awkward items. These units are only limited by your available space!

Shelving needs constantly changing? Get a system that changes with them...

Quick Change Cantilever Shelving
is an excellent solution for spaces
needing a versatile shelving
unit that easily changes
to meet your demands.

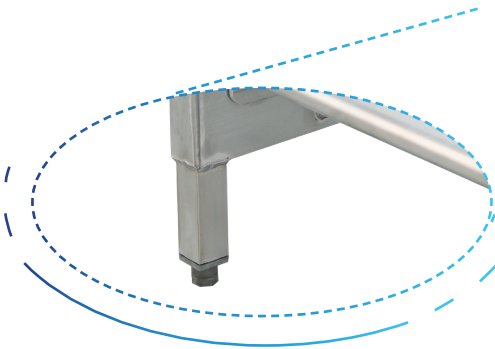
Shelves lift and lock into clips
welded to the uprights every
twelve inches — *no tools required!*



Freestanding Units:

21" Deep Uprights for 18" Shelves
27" Deep Uprights for 24" Shelves

*Freestanding units include an
adjustable front foot!*



Cantilever shelving is available in Ceiling-Mounted units
that are mounted in the ceiling of the walk-in cooler.
These units are available in multiple heights to fill as
much wall space as needed!



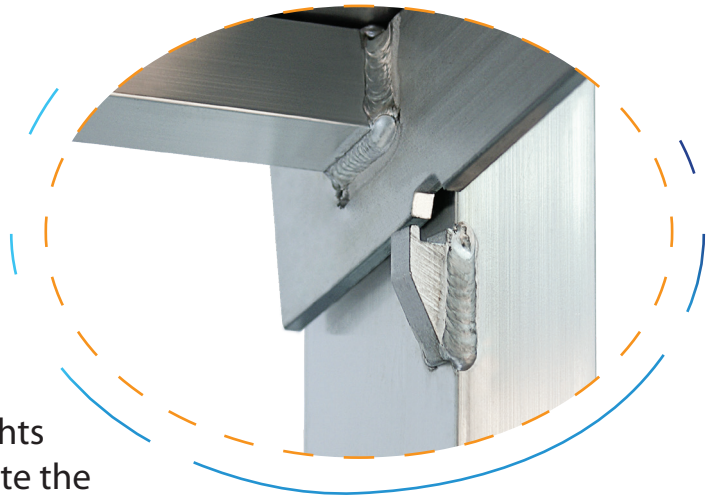
*Want to know more?
Check out our webpage!*

*Cantilever shelving systems possess the benefits of other New Age Industrial shelving,
including heavy duty aluminum materials that resist rust and corrosion, as well as a
Five-Year Guarantee against material defects and workmanship.*

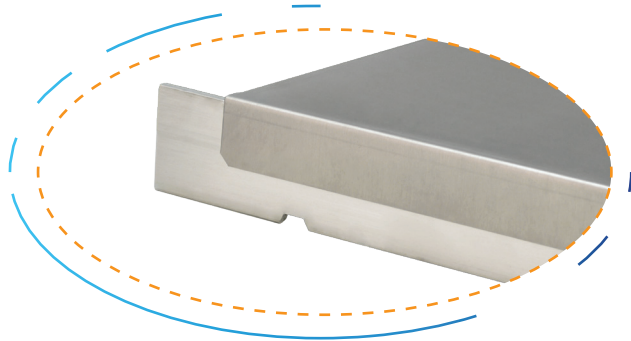
Shelf Styles

Mix-and-Match shelf styles to create your ideal shelving unit!

All shelves include integrated notches that allow each unit to lift and lock into place. Uprights include clips, welded on 12" centers, that facilitate the cantilever mechanism for a strong, sturdy hold.



Easily reposition shelves — no tools required!

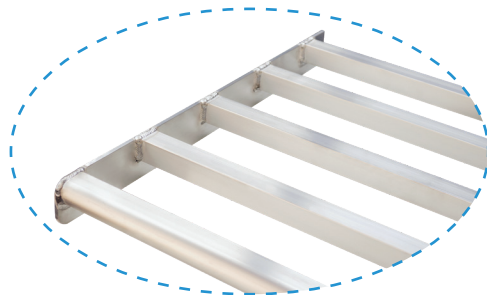


H.D. Bar

Similar to a dunnage rack, H.D. Bar style shelves are excellent for storing and organizing larger, heavier items.



Laterals are constructed of 1¼" x 1¼" x .070" thick tubing. Front lateral is 1¼" x 1½" x .080" D-shaped tube.



Weight capacity of 900 pounds

T-Bar

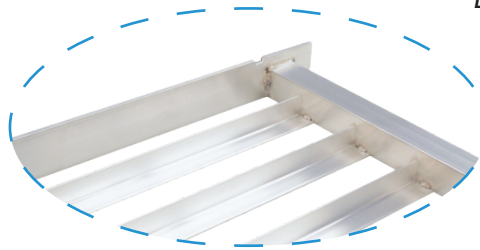
T-Bar shelving provides a smooth, flat surface that is easy to clean and allows boxes to slide for easy loading and unloading.



Weight capacity of 900 pounds

The 1¼" x 2¼" x .100" thick T's are spaced every 1¾" to allow air to circulate to stored items.

Each end of every T is secured to 1¾" x 1¾" x .100" thick laterals at three points to ensure the strongest, most stable connection.



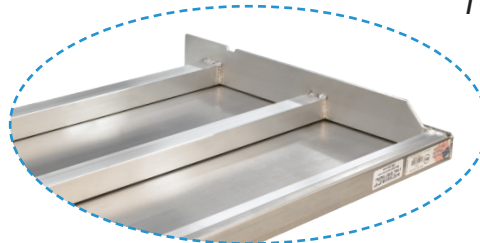
Solid Brute

Ideal for smaller, lighter items, solid shelves feature a smooth surface that is easy to clean and allows boxes to slide effortlessly.



Weight capacity of 700 pounds

Top is constructed of .050" thick sheet, supported by 1¼" x 1¼" x .070" thick tubing.



Shelving Styles and Sizes

H.D. Bar



Weight capacity of 900 pounds

Model No.	Shelf Size
2501	18" x 36"
2502	18" x 42"
2503	18" x 48"
2505	18" x 60"
2511	24" x 36"
2512	24" x 42"
2513	24" x 48"
2515	24" x 60"

T-Bar



Weight capacity of 900 pounds

Model No.	Shelf Size
2521	18" x 36"
2522	18" x 42"
2523	18" x 48"
2525	18" x 60"
2531	24" x 36"
2532	24" x 42"
2533	24" x 48"
2535	24" x 60"

Solid Brute



Weight capacity of 700 pounds

Model No.	Shelf Size
2541	18" x 36"
2542	18" x 42"
2543	18" x 48"
2545	18" x 60"
2551	24" x 36"
2552	24" x 42"
2553	24" x 48"
2555	24" x 60"

How to order Cantilever Shelving

- All cantilever shelving *requires* a left and a right upright.
Uprights include clips, welded every twelve inches, that allow cantilever shelves to lift and lock into place —*no tools required*.
- Common uprights are used to build shelving runs longer than five feet and to connect sections with different shelf lengths.
- All freestanding cantilever units **require** a pair of horizontal braces for each section of the shelving unit.

Braces and shelves in a given section must have identical lengths.

Calculating Cantilever Shelving Length:

The required uprights, left and right, contribute an additional 2¾" to the total length of a shelving run. Therefore, each shelving unit — *with or without common uprights* — is 2¾" longer than the sum of each shelving section.

The unit in this photograph includes:

- (1) Left Upright [Model #2561](#)

Select shelves and *required* braces:

- (1) Solid Brute 18" x 42" [Model #2542](#)
- (1) T-Bar 18" x 42" [Model #2522](#)
- (1) H.D. Bar 18" x 42" [Model #2502](#)
- (1) Set of Horizontal Braces [Model #2582](#)

- (1) Common Upright [Model #2565](#)

Select shelves and *required* braces:

- (1) Solid Brute 18" x 42" [Model #2542](#)
- (1) T-Bar 18" x 42" [Model #2522](#)
- (1) H.D. Bar 18" x 42" [Model #2502](#)
- (1) Set of Horizontal Braces [Model #2582](#)

- (1) Right Upright [Model #2563](#)

Left upright ^
2561

Common upright ^
2565

Right upright ^
2563



Pictured unit is 7' 2¾" in length, or 86¾" total, once assembled.

NEW AGE INDUSTRIAL INC

New Age Industrial Corporation, Inc.

www.NewAgeIndustrial.com

Phone: 800.255.0104 or 785.877.5121

Fax: 877.877.7687 or 785.877.2616



Check out our
Shelving Video!