



## IMC/TEDDY FOR ALL YOUR



## STAINLESS STEEL NEEDS

50 Ranick Drive East • Amityville, NY 11701  
800-221-5644 • [info@imcteddy.com](mailto:info@imcteddy.com)  
[www.imcteddy.com](http://www.imcteddy.com)



Scan to visit  
IMC/Teddy  
website



# NEW 2023 PRODUCTS

IMC/Teddy is proud to introduce our new product lineup for 2023 which coincides with our expanding role as a leader in stainless steel food service equipment.

These new products complement our growing catalog of current products & are a great example of how we are exploring design, development, & applications for the industry.

Meet the new products below:

**CHCB-24**  
Chef's Closet



**BNC**  
Chef's Bench



**ICBS**  
Mobile Ice Bin



**WTS**  
Mobile Serving Table



**IHST**  
Integral Hand Sink w/ Towel Dispenser



**GLC-1**  
Glass Rack Cart



# FLOOR TROUGHS

## KEY FEATURES

- Constructed of Type 304 Stainless Steel
- Troughs Have 1" Ledge All Around, Deep Pitch & a Large Waste Cup
- Recessed Flange Supports Floor Tile & Provides a Grout Pocket
- Many Sizes in Stock
- Exposed Surfaces Polished Smooth to a Brush Satin Finish

\*See Price List for complete product offerings

### CFT SERIES

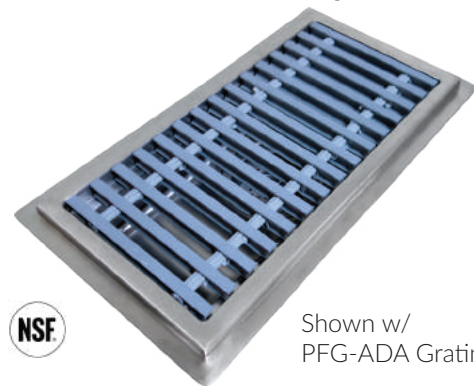
16GA, 4" Deep



Shown w/  
SG Grating

### FT SERIES

14GA, 4" Deep



Shown w/  
PFG-ADA Grating

### ASFT SERIES

14GA, 6" Deep



Shown w/  
SG Grating

### SFT SERIES

14GA, 2" Deep



Shown w/  
No Grating

### TRE SERIES

14GA, 4" Deep



Shown w/  
PFG-ADA Grating

### FWR SERIES

16GA, 4" Deep



Shown w/  
PFG Grating

FLOOR TROUGHS

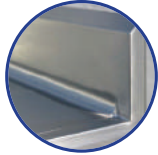


# FLOOR PANS

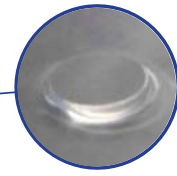
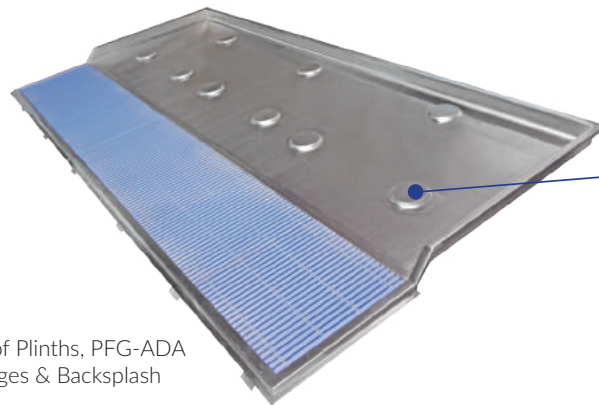
## KEY FEATURES

- Constructed of Type 304 Stainless Steel
- Integral Pitch Towards Waste Outlet - Perforated Waste Basket Included
- Continuous Stiffeners Stabilize the Pan for Extreme Temperatures & Anchor Straps Secure Unit to the Floor
- Protects Floor from Corrosion Damage & Provides Stable Base for Heavy Equipment
- Custom Floor Pan Sizes & Options Available

### APT FLOOR PAN & TROUGH



Close-Up of Backsplash & Side Ledge Which Slopes to the Trough



Close-Up of Equipment Plinth

Shown w/ (3) Sets of Plinths, PFG-ADA Grating, Side Ledges & Backsplash

### FPT FLOOR PAN & TROUGH



Shown w/ Notched Floor Trough & Grating Support Bars

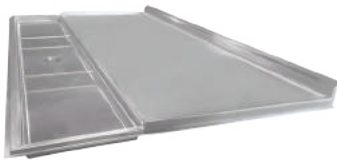


Fig. 1

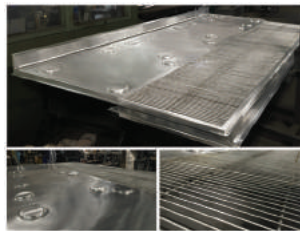


Fig. 2



Fig. 3

- Shown are examples of different configurations of Floor Pan & Troughs, mainly used in prison kitchens - Vandal Proof (Security Package)
- Can be used for ice machines
- Customize your own to suit your needs
- Consult with our Engineering Team for more solutions



# SHELVING

## KEY FEATURES

- Constructed of Type 304 Stainless Steel
- Posts Are 1 $\frac{5}{8}$ " OD Tubes, 16GA with Caps & Adjustable S/S Feet
- Solid Shelves Permit a Quick Cleanup of Spills
- Louvered Shelves Are Used for Circulation & to Maintain Uniform Temperature
- Multiple Caster & Security Options Available

### BL SERIES 18GA, Standard Duty



Shown w/  
Different Style  
Shelves &  
Optional Casters

### S SERIES 16GA, Heavy Duty



Shown w/ Louvered  
Shelves & Optional  
Casters

### SX SERIES 14GA, Extra Heavy Duty



Shown w/  
Optional Casters

### SSS SERIES 14GA, Security



Shown w/  
Optional Casters

### BLC 18GA, Corner Shelving



Shown w/  
Louvered & Solid  
Shelving w/  
Optional Casters

### D SERIES 16GA, Dunnage Rack



Solid Model (S)  
w/ Legs



Louvered Model (L)  
w/ Optional  
Casters



# HAND SINKS

## KEY FEATURES

- Constructed of Type 304 Stainless Steel
- Large Oversize Deck Provides Space for Faucet, Soap Dispenser, Eye Wash Station & Integral Towel Dispenser
- High Backsplash Protects Wall & Keeps Sink Sanitary
- Large Integral Apron Conceals All Plumbing
- All Hand Sinks Are Handmade so There Is No Loss of Metal Thickness

### WS HAND SINKS

Wall Mounted



WS-2S  
Shown w/  
Standard  
Faucet & Soap  
Dispenser

### ADA-WS HAND SINKS

ADA Wall Mounted



ADA-WS-2D  
Shown w/  
Standard  
Faucet & Soap  
Dispenser

### CSW HAND SINKS

Wall Mounted



CSW-2S  
Shown w/  
Standard  
Faucet

### WS-CK HAND SINKS

Corner Hand Sinks



WS-CK-2S  
Shown w/  
Gooseneck  
Faucet

### CMS

Free Standing Hand/Utility Sink



### WSMS

Multi-Station Hand Sinks



WSMS-2-48  
Shown w/  
Optional Legs &  
Electronic Soap  
Dispenser



# UTILITY SINKS / MOP CABINETS

## KEY FEATURES

- Constructed of Type 304 Stainless Steel
- All Corners Are Coved, & All Seams Are Fully Welded & Polished Smooth
- Easily Customizable to Fit Your Project
- Engineered to Stand up Under Day in & Day-Out Abuse
- Attractive Brushed Finish

**FS**  
Standard Mop Sink



**FS-AS**  
Anti-Splash Mop Sink



**CMSC-R**  
Combo Utility Cabinet



**MSC**  
Mop Sink Cabinet



**3-COMPARTMENT SINKS**  
3 Compartment, 1 & 2 Drainboards



SCS-3  
Shown w/  
Left & Right  
Drainboards

**CORNER COMPARTMENT SINKS**  
3 Compartment, 1 & 2 Drainboards



SCS-3  
Shown w/  
Left & Right  
Drainboards

# CABINETS

## KEY FEATURES

- Constructed of Type 304 Stainless Steel
- Stainless Steel Double Pan Doors, Solid or With Glass
- Can Be Supplied Without Doors or With Standard Sliding or Hinged Design Doors
- Provides Flexibility in Designing Storage Space in your Facility
- Add Locks to Any Unit for Security - Correctional Package Available for Any Unit

**SC**  
Storage Cabinet



SC-1836HS  
Shown w/  
Hinged Glass  
Doors



**SC-SEC**  
Security Storage Cabinet



SC-SEC-48



**OC**  
Wall Cabinet



Shown w/  
Optional Solid  
Doors



**OC-SEC**  
Security Wall Cabinet



OC-SEC-2



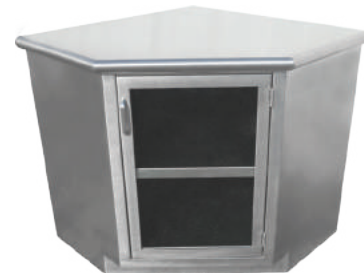
**BC SERIES**  
Base Cabinets



BCS  
Shown w/  
Optional Sink,  
Faucet, &  
Backsplash



**BC-CHG**  
Corner Cabinets



BC-CHG  
Shown w/  
Hinged Glass  
Door & Rolled  
Edge





# DISHTABLES & SOAK SINKS

## KEY FEATURES

- Constructed of Type 304 Stainless Steel
- Mounted on 16GA, 1½" Stainless Steel Tubing with Stainless Steel Adjustable Feet for Leveling
- Tops Are Turned up 3" & Finished with a 1½" Sanitary Rolled Edge.
- Pre-Rinse Sink Is 14GA & Includes a Stainless Steel Perforated Basket with Tubular Rack Guides Welded In.
- Choice of Straight, Corner or Island Dishtables.

### SCDT

Clean Dishtable - Straight



### SICD

Clean Dishtable - Island



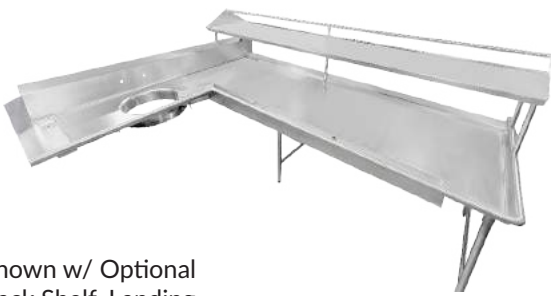
### SSDT

Soiled Dishtable w/ Prerinse Sink - Straight



### ISDS

Soiled Dishtable w/ Landing Shelf & Prerinse Sink



Shown w/ Optional Rack Shelf, Landing Shelf, Garbage Chute (Custom)

### UCS

Undercounter Mobile Sink



Shown w/ Optional Chute

### MSK

Portable Soak Sink



DISHTABLES & SOAK SINKS



# WORKTABLES / MIXER & SLICER TABLES

## KEY FEATURES

- Constructed of Type 304 Stainless Steel
- 14GA or 16GA Stainless Steel Top, 18GA Stainless Steel Undershef
- Stainless Steel Gussets, Bullet Feet, & Legs
- Backsplash Available
- Fully Customizable to Fit Your Needs

**WT**  
Flat Top



**WTB**  
5" Backsplash



**WTBC**  
5" Backsplash w/ Crossrails



**SMT**  
Mixer Table w/ Undershef



**SMTS**  
Slicer Table w/ Tray Slides



**SMTT**  
Mixer Table w/ Tool Tree



# PROJECT SHOWCASE



## The following is a partial list of our projects:

- Google, CA
- Google, NY
- Disney, FL
- Fresh Direct, NY
- Lago Resort Casino, NY
- Montreign Casino, NY
- Disney Yacht & Beach Convention Center, FL
- Houston's
- LIDL
- UBS Arena, NY
- Stony Brook University, NY
- Enfield Armory, CT
- Yale University, CT
- Harvard University, MA
- Fishkill Correctional Facility, NY
- Ralph Wilson Stadium
- Wrigley Field, IL
- Strong Memorial Hospital , NY
- Williams College, MA
- Katara Tower Lusail - Qatar
- Qatar Olympic Sports Club - Qatar
- Five Star Hotel & Residences at Marsa Arabia - Qatar
- Sandals - Montego Bay
- National Guard Hospital - Saudi Arabia





Established in 1955, IMC/Teddy is a Consultant/Designer driven manufacturer of Food Service Equipment. We welcome product recommendations & upgrade suggestions from you. Our mission is to introduce new & innovative products in food service equipment & storage/handling systems.

IMC only uses Type 304 stainless steel which is recommended for high corrosion resistance & uniformity of finish. Every IMC product will perform its intended function even in the most punishing work environment.

Production begins with Laser & CNC machine work & the final product is finished with a vbrushed satin. The finish has the ability to hide & blend scratches for many years. Each product is then carefully inspected & protected for delivery to the customer. All products are 100% manufactured in USA.

For a complete catalog or the representative nearest to you, visit [www.imcteddy.com](http://www.imcteddy.com) or contact us below.



50 Ranick Drive East • Amityville, NY 11701

800-221-5644 • [info@imcteddy.com](mailto:info@imcteddy.com)

[www.imcteddy.com](http://www.imcteddy.com)



Scan to visit  
IMC/Teddy  
website