

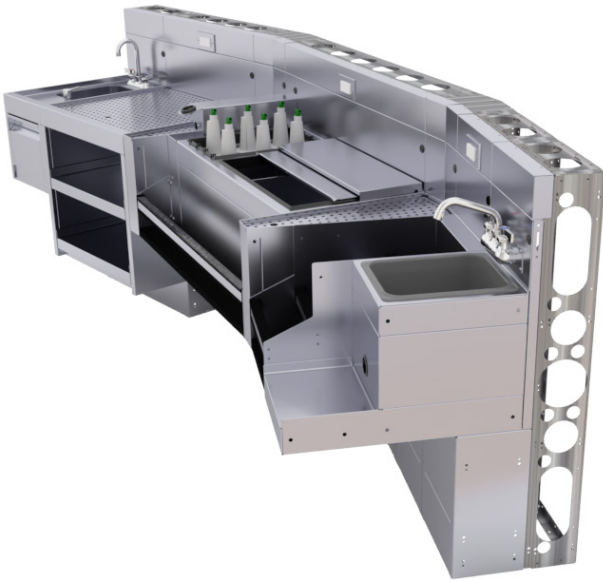
Glastender®

MODULAR BAR DIE



Features

Modular bar die is a utility distribution wall for underbar equipment which eliminates leg sets for a cleaner, more attractive bar.



Lower Installation Cost & Reduce Installation Time

- Arrives pre-assembled from the factory in sections up to six feet long.
- Millwork bar top and front panels can be pre-fabricated and easily attached after utility work is complete.
- Factory installed LED lights and 20A GFI outlets for electrical equipment.
- Pre-engineered and manufactured to exact dimensions.

Heavy Duty

16-gauge galvanized steel structure easily withstands 1,000 pounds per foot of downward force.

Better Cleanability

Without underbar legs to work around, cleaning can be done more thoroughly and with less effort.

Top to bottom stainless steel finishing on bartender side.

Sleek Appearance

Chaseways are built-in to hide beverage, plumbing, and electrical lines for a more attractive bar.



Scan this code to view spec sheets, installation manuals, and pricing.

