



Maximum Product Display at an Economical Price!



Standard Door Sizes :
 23", 26", 28", 30" width
 36", 67", 75", 79" height
 Custom Sizes Available



401 SERIES

COOLER & FREEZER DOORS

LOW COST ADVANTAGE



ADVANTAGE



401 SERIES

Anthony's **ECONOMICAL** Cooler and Freezer Door packages.

STANDARD COOLER DOORS

Designed with door and frame heat for condensation-free operation in a wide range of climate conditions.

FREEZER DOORS

Manufactured with 3-pane heated glass.



NEW!
Full-Length
Handles and
T-8 "Precision"
Lighting Options!

Features

- Narrow (1⁵/₁₆") door rail for maximum viewing area
- Anthony's complete Four-Post shelving system with adjustable 24" deep white epoxy-coated steel shelves and matching price tag molding
- Insulated 2-pane (cooler) or 3-pane (freezer) fully-tempered safety glass
- Torquemaster™ system for door sag adjustment and closing tension
- Magnetic door gaskets for air-tight seal
- Heated door and frame rails to prevent condensation
- Full-length vertical fluorescent 800ma (cooler) or 1500ma (freezer) light fixtures, including lamps, shields, and 120-Volt ballasts
- Available in variety of standard finishes such as smooth or serrated Silver, Black and Gold

Custom Colors Available

Optional T-8 and Precision Lighting Available

Optional Full-Length Handles Available

Trimline Handles



Custom Handle Inserts



Numerous Door Rail Styles



Hinge Pin

Allows the door to be energized without the use of conventional power cords.



Torquemaster™

For complete door adjustment – in seconds! Anthony's Torquemaster quickly adjusts door closing tension and centers the door in its frame – with only a regular screwdriver! Providing the benefits of efficient closing action, lasting torque control, and precision door mounting, it works so easily that store maintenance personnel can easily make adjustments, when necessary – without special tools!



ANTHONY INTERNATIONAL

12391 Montero Avenue, Sylmar, CA 91342

800.772.0900 Fax 818.361.9611 www.anthonydoors.com



Introducing...



E.S.P. SYSTEM

Protecting Our Environment and Preserving Our Food Chain



- ✓ **Eliminator2 Energy-Free aluminum FREEZER and cooler doors**
- ✓ **High Efficiency Super Insulated Frame**
- ✓ **Anthony International's exclusively designed LED System with 5-year warranty on components, 15 months for labor**
- ✓ **Anti-Fog Coating with limited 10-year warranty***
- ✓ **Saves over 60% of the energy consumed in standard OEM Systems**
- ✓ **Payback in 2 years or less**

* PROVIDED BY GLASS MANUFACTURER. COPY AVAILABLE UPON REQUEST.





E.S.P. SYSTEM



LED LIGHTING



Annual Operating Cost Comparison

	LIGHTING	GLASS TYPE	DOOR SIZE WIDTH x HEIGHT	# OF DOORS	HEATER AMPS	LIGHT WATTS	BTU LOAD	HEATER	LIGHTS	COMP	TOTAL OPERATING COST
Std. OEM Freezer Door	ELS	CP3LT-HR HEATED	29 ¹ / ₁₆ " x 62 ⁹ / ₁₆ "	10	15.64	696	6828	\$1,315	\$488	\$1,062	\$2,865
ELM2 Freezer Door	LED	3PNHG-REFL- ARGON	29 ¹ / ₁₆ " x 62 ⁹ / ₁₆ "	10	4.62	276	3266	\$389	\$193	\$508	\$1,090

NOTES: Voltage: 120 Rate: \$08/KWH
 Calculations based on typical efficient freezer @ EER = 4.5 BTU/watt. BTU loads and savings will generally be higher for older compressors.
 Calculations do not include door opening losses or case wall losses. Compressor costs include lighting loads.



ANTHONY INTERNATIONAL

12391 Montero Ave., Sylmar, CA 91342

800.772.0900 Fax 818.361.9611

www.anthonydoors.com



PASS-THRU

COOLER DOORS

CSA / NSF / UL Listed

Designed to match your reach-in door lineups, these sturdy and attractive pass-thru doors provide easy access to your walk-in cooler.



Anthony's self-closing Pass-Thru cooler doors are available in three styles:

- **Solid Panel** (urethane insulated aluminum-clad or Formica panels: Silver, Gold, Black or White)
- **1/3 Glass & 2/3 Solid Panel**
- **All Glass** (2-pane non-heated Argon-filled glass with heat-reflective coating; or 3-pane non-heated glass with Argon fill or heat-reflective coating*)

Anthony Pass-Thru Cooler Doors are manufactured to match your reach-in door lineups: Model 101 (Model 103), Model 1001 (Model 1003), Model 401 (Model 403), and Designer Series Model 2100 (Model 2103).

*The EISA (Energy Independence & Security Act) compliant specifications stated in this document will be effective on all products manufactured after December 31, 2008.



Designer Series Pass-Thru doors are offered in the same variety of colored borders and handles as the Model 2100 reach-in doors.





PASS-THRU Door Models

STANDARD FEATURES

All Anthony Pass-Thru doors are manufactured with sturdy aluminum perimeter frames with heaters, and include these standard features:



1. **90° Door Stop / Auto Hold-Open**



2. **Standard Finishes & Handles** – Pass-thru doors available with the same standard finish and handle choices as their matching reach-in door models.



3. **Adjustable vinyl wiper seals** – Installed for improved energy efficiency. When the door is closed, the wiper fits flush to the floor or threshold.



4. **Frame Threshold** – All perimeter frames are manufactured with a bottom threshold unless “no threshold” is requested for roll-cart installations.



5. **Torquemaster** – For complete door adjustment—in seconds! Using only a regular screwdriver, Anthony’s Torquemaster adjusts door closing tension and centers the door in its frame, providing the benefits of efficient closing action and lasting torque control.

PASS-THRU OPTIONS



6. **Bumper Bar**



7. **Round Push Bar**



8. **Stainless Kickplate**

(not available on All-Glass doors)



“ELS” or “OptiMax2 LED” Lighting

Electronic Door Lock (Models 103, 2103)

Full-length Handles (Models 103, 403, 2103)

(ADA-compliant pass-thru doors also available upon request)

Turn your cooler space into a showplace with Anthony’s all-glass Pass-Thru doors and Roll-A-Way Units — attractive and practical additions to your cooler lineup!

For increased sales volume in walk-in coolers, additional beer, beverage or deli items can be merchandised behind the all-glass pass-thru door. Anthony’s Roll-A-Way Beverage or Deli Unit is rolled back and out of the way for access to the cooler. When the door is not in use, the Roll-A-Way is pulled back up behind the glass door, with wheels locked, increasing your merchandising display area!



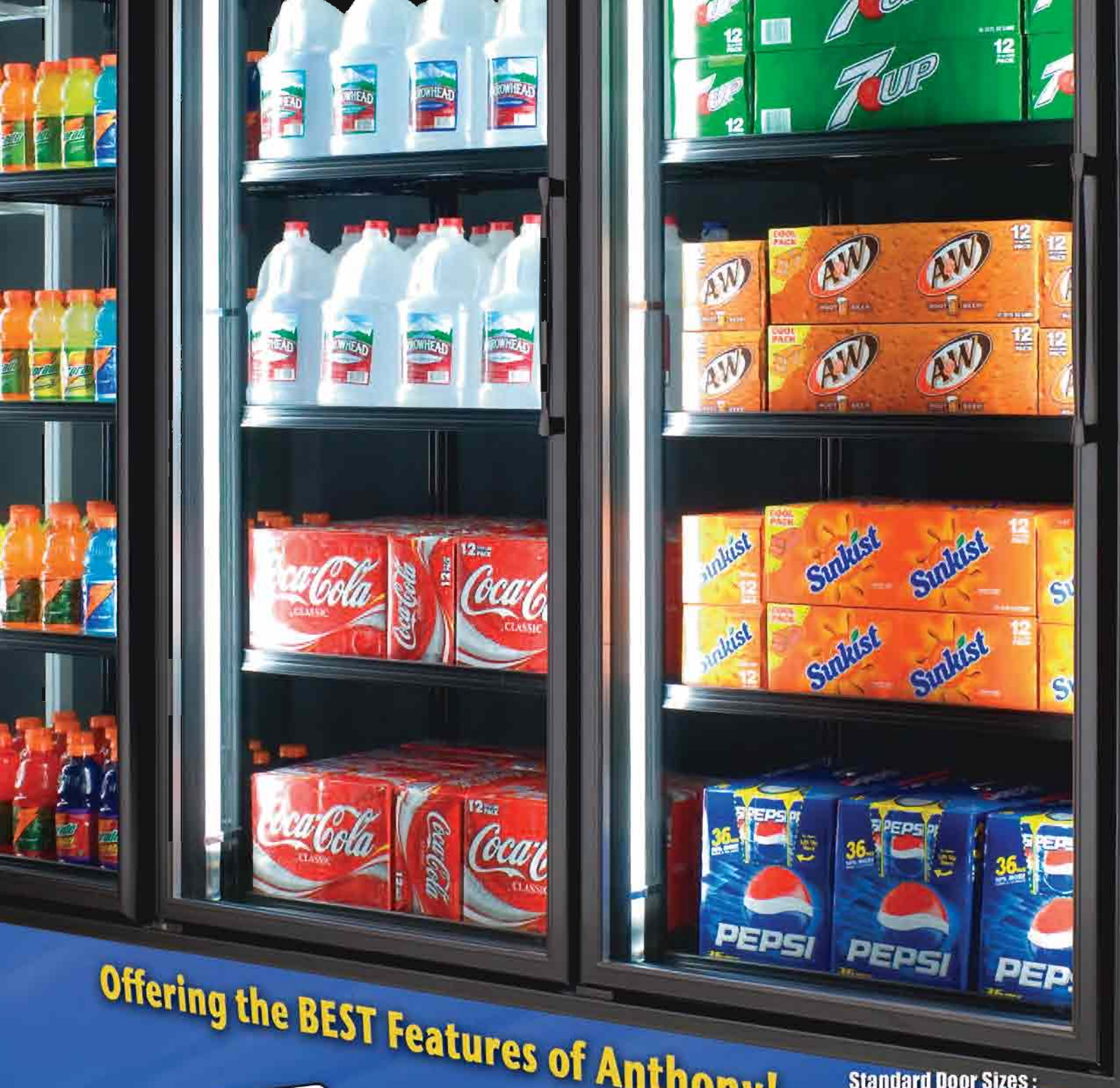
ANTHONY INTERNATIONAL

12391 Montero Avenue, Sylmar, CA 91342

818.365.9451 Toll-Free 800.772.0900 Fax 818.361.9611

www.anthonydoors.com





Offering the **BEST** Features of Anthony!



101 SERIES

COOLER & FREEZER DOORS

Standard Door Sizes :
24", 26", 28", 30" width
36", 67", 75", 79" height
Custom Sizes Available





101 SERIES

Setting higher standards for Versatility, Energy-Efficiency and Performance in cooler and freezer doors!

STANDARD COOLER DOORS

Designed with door and frame heat for condensation-free operation in a wide range of climate conditions.

ENERGY-FREE COOLER DOORS

Insulated non-heated glass unit for high performance

FREEZER DOORS

Anthony's Heat-Reflective glass coating on the 3-pane heated glass unit enhances insulation properties of the door



NEW OptiMax LED Lighting

- Long Life
- Lower Energy Costs
- Lower Maintenance Costs
- Focused Light
- No Mercury
- UL / NSF Listed



Electronic Locks

- Lock Doors from Remote Location
- No Keys
- Use Standard 120V power

Factory installed Cylinder Locks and P.O.M. Locks available



Torquemaster™

For complete door adjustment – in seconds! Anthony's Torquemaster quickly adjusts door closing tension and centers the door in its frame – with only a regular screwdriver! Providing the benefits of efficient closing action, lasting torque control, and precision door mounting, it works so easily that store maintenance personnel can easily make adjustments, when necessary – without special tools!

Features

- Available in variety of standard finishes such as smooth or serrated Silver, Black, and Gold. *Custom colors available.*
- Insulated perimeter frames designed for easier servicing and maintenance from the front of the doors!
- Patented Forward Facing Raceway
- Doors for cooler or freezer applications
- 2-pane or 3-pane fully-tempered safety glass
- Reversible doors, for quick change to left or right hinge
- Anthony Hingepin for cordless power to door
- Torquemaster™ system for door sag adjustment and closing tension
- Choice of narrow (1⁵/₁₆") or wide (1³/₄") door rail
- Magnetic door gaskets for air-tight seal
- Adjustable, 27" deep Epoxy Coated shelving system, with price tag molding
- Full-length fluorescent light fixtures, with lamps, shields and prewired 120V ballasts
- Standard T-10/T-12 lighting; optional LED or ELS
- Standard Slimline handles; optional Soft Touch, Full-length
- Matching Model 103 Pass-Thru Doors available in all glass, solid panel, or 1/3 glass and 2/3 solid panel
- Matching C2000 curved glass doors available
- Marquee door compatible



ANTHONY INTERNATIONAL

12391 Montero Avenue, Sylmar, CA 91342

800.772.0900 Fax 818.361.9611 www.anthonydoors.com

