

# ADCRAFT®

Serving the Foodservice Industry Since 1952

## Smallwares & Countertop Electric Equipment

This Catalog is updated  
regularly, scan here for  
the most current version.





The Legacy Companies is a privately-owned company, founded in 2000. We are a leading commercial food service equipment provider that designs, manufactures, distributes and markets, nationally and internationally, a diverse portfolio of products under world-class brands that exceed customer expectations.

The Legacy Companies is a trusted leader in the commercial industry. We are dedicated to helping you get the most out of your kitchen – from refrigerators and freezers, to merchandisers, ice machines, dishwashers, proofers, kettles, counter-top equipment, and smallwares, we have what your commercial foodservice business needs.

The power of our iconic brand portfolio combined with our focus on innovation and quality is what makes us the Legacy Companies.

## Smallwares

Bakeware .....	4
Bar Supplies.....	13
Buffetware .....	18
Cookware .....	24
Cutting Boards & Mats.....	34
Flatware .....	37
Hand Tools.....	42
Holloware .....	59
Mixing Bowls .....	64
Pans .....	66
Pizza Supplies.....	74
Soft Goods .....	78
Tabletop.....	81
Thermometers & Timers.....	87

## Electric Equipment

Countertop Electric Equipment .....	90
Immersion Blenders.....	94
Beverage & Bar .....	96
Electric Cooking Equipment.....	98
Food Warming & Holding .....	102
Concessions & Food Display.....	105
Food Preparation .....	108

## Storage & Transport

Bus & Storage Boxes.....	111
High Chairs .....	111
Utility Carts.....	111
Work Tables .....	112
Equipment Stands .....	112

# Bakeware

- Pans: Bun, Loaf, Muffin, Cake & Springform
- Screens
- Food Mills
- Sieves & Flour Sifters
- Dough Dividers
- Pastry Blender
- Biscuit & Cookie Cutters
- Cake Stands & Covers
- Pastry Decorating
- Pastry Bags & Brushes
- Funnels
- Measuring Sets
- Whips
- Wooden Spoons
- Pastry Brushes
- Mixing Paddles





BP-1826H

BP-1318

BP-1826



V-144

V-144C

### Bake Pan

Item #	Description	UOM	Dimensions
V-144	Oblong Bake Pan, Stainless Steel	EA	10" x 15" x 2"
V-144C	Oblong Bake Pan Cover, Stainless Steel	EA	10" x 15" x 0"



LOF-953

### Loaf Pan

Item #	Description	UOM	Dimensions
LOF-953	Oblong, Stainless Steel	EA	5" x 9" x 2"

### Aluminum Bun Pans

Item #	Description	UOM	Dimensions
BP-1826H	Full Size, 16 Gauge	EA	26" x 18" x 1"
BP-9513	Quarter Size, 18 Gauge	EA	13" x 10" x 1"
BP-1318	Half Size, 18 Gauge	EA	18" x 13" x 1"
BP-1826	Full Size, 18 Gauge	EA	26" x 18" x 1"
BP-1826P	Full Size, Peforated, 18 Gauge	EA	26" x 18" x 1"

Our Bakeware collection covers every step of the process—from mixing and measuring to baking and decorating. With durable pans, sifters, pastry tools, and more, this lineup is built to deliver reliable results in busy commercial kitchens.



AMP-12

AMP-24



AM/NS-24

### Muffin Pans

Item #	Description	UOM	Dimensions
AMP-12	14 Cup, Aluminum	EA	14" x 11" x 1"
AMP-24	24 Cup, Aluminum	EA	21" x 11" x 1"

### Non Stick Muffin Pan

Item #	Description	UOM	Dimensions
AM/NS-24	24 Cup, Aluminum	EA	21" x 11" x 1"



RD-102

### Cake Pan

Item #	Description	UOM	Dimensions
RD-102	9-3/4" Diameter, Stainless Steel	EA	10" x 10" x 2"



AB-40



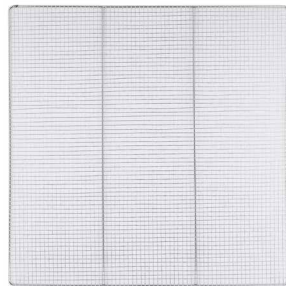
AB-60

### Springform Cake Pans

Item #	Description	UOM	Dimensions
AB-40	8" Diameter, Aluminum	EA	8" x 8" x 3"
AB-60	9" Diameter, Aluminum	EA	9" x 9" x 3"
AB-50	10" Diameter, Aluminum	EA	10" x 10" x 3"



DNS1725



DNS2323

### Donut Frying Screens

Item #	Description	UOM	Dimensions
DNS1725	17" x 25", Nickel Plated	EA	25" x 17" x 1"
DNS2323	23" x 23", Nickel Plated	EA	23" x 23" x 1"



GS1725



GS2323

### Glazing Screens

Item #	Description	UOM	Dimensions
GS1725	17" x 25" Glazing Screen, Nickel Plated	EA	17" x 25" x 0"
GS2323	23" x 23" Glazing Screen, Nickel Plated	EA	0" x 23" x 23"



SIE-16



SIE-12

### Sieves

Item #	Description	UOM	Dimensions
SIE-12	12" Diameter, Stainless Steel	EA	12" x 12" x 3"
SIE-16	16" Diameter, Stainless Steel	EA	4" x 16" x 16"



FM-20



FM-35

### Foley Food Mill

Item #	Description	UOM	Dimensions
FM-20	2 qt. Mill, Stainless Steel	EA	13" x 7" x 7"
FM-35	3-1/2 qt. Mill, Stainless Steel	EA	16" x 9" x 8"



FLS-8

### Rotary Flour Sifter

Item #	Description	UOM	Dimensions
FLS-8	6 1/8" Diameter, Stainless Steel	EA	6" x 8" x 9"



DRE-10

DRE-10NH

### Dredges

Item #	Description	UOM	Dimensions
DRE-10	With Handle, 10 oz	EA	4" x 3" x 4"
DRE-10NH	Without Handle, 10 oz	EA	3" x 3" x 4"



ADD-6WH

### Adjustable Dough Dividers

Item #	Description	UOM	Dimensions
ADD-6WH	2-1/4" Diameter, Stainless Steel	EA	10" x 2" x 2"



SPB-5

### Pastry Blender

Item #	Description	UOM	Dimensions
SPB-5	5 Blades, Stainless Steel	EA	4" x 4" x 1"



AT-5307

AT-5357

### Ateco Biscuit Cutters

Item #	Description	UOM	Dimensions
AT-5307	3/4" to 2-3/4" Diameter, set of 11	SET	4" x 4" x 2"
AT-5357	7/8" to 3" Diameter, set of 11	SET	4" x 4" x 2"



AT-1441/12



AT-1442/12

### Ateco Cookie Cutters

Item #	Description	UOM	Dimensions
AT-1441/12	1-1/2", pack 12 per box	PKG	2" x 2" x 2"
AT-1442/12	2-1/2", pack 12 per box	PKG	3" x 3" x 2"



CS-13



CS-13A



AT-612

### Cake Stands and Covers

Item #	Description	UOM	Dimensions
CPG-12	Clear Cover, 12" Diameter, Lucite	EA	12" x 12" x 7"
CS-13	Mirror Finish Stand, Stainless Steel	EA	13" x 13" x 7"

### Ateco Revolving Cake Stand

Item #	Description	UOM	Dimensions
AT-612	12" Diameter, Cast Iron	EA	12" x 12" x 5"



AT-1446/12

### Ateco Decorating Comb

Item #	Description	UOM	Dimensions
AT-1446/12	4", 12 Per Pack	PKG	0" x 9" x 9"



AT-334



AT-782



AT-783

### Ateco Cake Decorating Set

Item #	Description	UOM	Dimensions
AT-334	10" Bag, Coupling, 6 Decorating Tubes	SET	1" x 6" x 7"

### Decorating Tube Set

Item #	Description	UOM	Dimensions
AT-782	26 Pieces	EA	6" x 7" x 2"
AT-783	52 Pieces	SET	7" x 9" x 2"

AT-400/10



### Plastic Couplings

Item #	Description	UOM	Dimensions
AT-400/10	10 Per Pack	PKG	1" x 1" x 1"

AT-9829



### Star Pastry Tube

Item #	Description	UOM	Dimensions
AT-9829	#9, 12 Per Pack	EA	2" x 2" x 2"



### Ateco Plastic Coated Pastry Bags

Item #	Description	UOM	Dimensions
AT-3112/12	12", pack 12 per box	PKG	3" x 6" x 8"
AT-3114/12	14", pack 12 per box	PKG	3" x 6" x 8"
AT-3116/12	16", pack 12 per box	PKG	3" x 6" x 8"
AT-3118/12	18", pack 12 per box	PKG	5" x 6" x 8"
AT-3121/12	21", pack 12 per box	PKG	5" x 6" x 8"
AT-3124	24", pack 1	EA	0" x 6" x 6"



### Ateco Canvas Pastry Bags

Item #	Description	UOM	Dimensions
AT-3212/12	12", pack 12 per box	PKG	3" x 6" x 8"
AT-3214/12	14", pack 12 per box	PKG	3" x 6" x 8"
AT-3216/12	16", pack 12 per box	PKG	3" x 6" x 8"
AT-3218/12	18", pack 12 per box	PKG	5" x 6" x 8"
AT-3221/12	21", pack 12 per box	PKG	5" x 6" x 8"
AT-3224/12	24", pack 12 per box	PKG	5" x 6" x 8"



HHS-14



HHS-105

### High Heat Scrapers

Item #	Description	UOM	Dimensions
HHS-105	10-1/2", Silicone Blade	EA	17" x 3" x 0"
HHS-14	14", Silicone Blade	EA	14" x 3" x 0"



RS-14



RS-10

### Rubber Blade Scrapers

Item #	Description	UOM	Dimensions
RS-14	14", Rubber Blade	EA	14" x 3" x 0"
RS-10	10", Rubber Blade	EA	17" x 3" x 0"



### Boilable Plastic Funnels

Item #	Description	UOM	Dimensions
HZ-808	8 oz, 4-1/8" Diameter	EA	4" x 4" x 5"
HZ-816	16 oz, 5-1/4" Diameter	EA	5" x 5" x 6"
HZ-832	32 oz, 6-1/2" Diameter	EA	7" x 7" x 7"
HZ-864	64 oz, 8-1/8" Diameter	EA	8" x 8" x 9"



### Aluminum Measures

Item #	Description	UOM	Dimensions
ALM-05	1/2 qt. capacity	EA	5" x 4" x 4"
ALM-1	1 qt. capacity	EA	6" x 5" x 5"
ALM-2	2 qt. capacity	EA	7" x 6" x 7"
ALM-4	4 qt. capacity	EA	9" x 7" x 9"



### Measuring Spoon 4-Piece Set, in Stainless Steel

Item #	Description	UOM	Dimensions
DMS-4/PKG	1/4 tsp, 1/2 tsp, 1 tsp, 1 tbs, 2 Pack Set, Stainless Steel	PKG	7" x 8" x 1"



### Measuring Spoon Set

Item #	Description	UOM	Dimensions
MSS-4	1/4 tsp, 1/2 tsp, 1 tsp, 1 tbs, Stainless Steel	SET	2" x 5" x 1"



### Measuring Cup Set

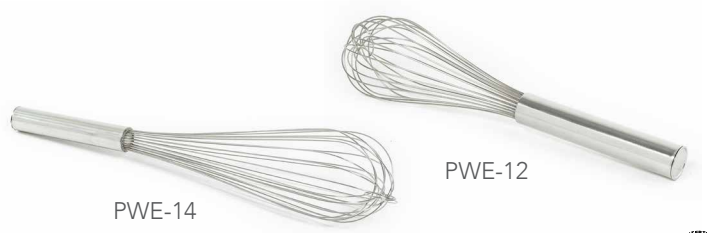
Item #	Description	UOM	Dimensions
MCS-4	1/4 c, 1/3 c, 1/2 c, 1 c, Stainless Steel	SET	4" x 6" x 2"
DMC-4	1/4 c, 1/3 c, 1/2 c, 1 c, w/ Pourer, Stainless Steel	SET	7" x 3" x 3"



### French Whips



Item #	Description	UOM	Dimensions
FWE-36	36", Stainless Steel	EA	36" x " x "
FWE-24	24", Stainless Steel	EA	24" x 5" x 1"
FWE-20	20", Stainless Steel	EA	20" x 4" x 1"
FWE-18	18", Stainless Steel	EA	18" x 4" x 1"
FWE-16	16", Stainless Steel	EA	16" x 3" x 1"
FWE-14	14", Stainless Steel	EA	14" x 3" x 1"
FWE-12	12", Stainless Steel	EA	12" x 3" x 1"
FWE-10	10", Stainless Steel	EA	10" x 3" x 1"



### Piano Whips



Item #	Description	UOM	Dimensions
PWE-18	18", Stainless Steel	EA	16" x " x "
PWE-16	16", Stainless Steel	EA	16" x 3" x 1"
PWE-14	14", Stainless Steel	EA	14" x 4" x 1"
PWE-12	12", Stainless Steel	EA	12" x 3" x 1"
PWE-10	10", Stainless Steel	EA	10" x 3" x 1"



### Wood Mixing Spoons

Item #	Description	UOM	Dimensions
HWDS-18	18" Heavyweight, Wood	DOZ	18" x 2" x 1"
HWDS-16	16" Heavyweight, Wood	DOZ	16" x 2" x 1"



### Rotary Egg Beater, Stainless Steel

Item #	Description	UOM	Dimensions
EB-12	Rotary Egg Beater, 12"	EA	3" x 12" x 1"



### Ateco Pastry Brushes

Item #	Description	UOM
AT-1601/12	1" Wide, pack 12 per box	PKG
AT-1608/12	1-1/6" Wide, pack 12 per box	PKG
AT-1602/12	2" Wide, pack 12 per box	PKG
AT-1603/12	3" Wide, pack 12 per box	PKG



### Pastry Brush

Item #	Description	UOM
PAB-20	2", Wood Handle	EA



IP-48

IP-60

### Premium Mixing Paddles

Item #	Description	UOM
IP-48	48", 1" Diameter Handle, Stainless Steel	EA
IP-60	60", 1" Diameter Handle, Stainless Steel	EA



PA-36

PA-42

PA-48

### Standard Mixing Paddles

Item #	Description	UOM
PA-36	36", 1" Diameter Handle, Stainless Steel	EA
PA-42	42", 1" Diameter Handle, Stainless Steel	EA
PA-48	48", 1" Diameter Handle, Stainless Steel	EA



HRP-18

HRP-15

### Heavy Wood Rolling Pins

Item #	Description	UOM	Dimensions
HRP-15	15" x 3.25" Barrel	EA	3" x 23" x 3"
HRP-18	18" x 3.25" Barrel	EA	3" x 26" x 3"



ROP-18

ROP-15

ROP-13

### Standard Wood Rolling Pins

Item #	Description	UOM	Dimensions
ROP-13	13" x 2.75" Barrel	EA	21" x 3" x 3"
ROP-15	15" x 2.75" Barrel	EA	23" x 3" x 3"
ROP-18	18" x 2.75" Barrel	EA	26" x 3" x 3"



PRA-3518

PRA-3515

### Aluminum Rolling Pins

Item #	Description	UOM	Dimensions
PRA-3515	15" x 3.5" Barrel	EA	23" x 4" x 4"
PRA-3518	18" x 3.5" Barrel	EA	26" x 4" x 4"



PZ-DD5704

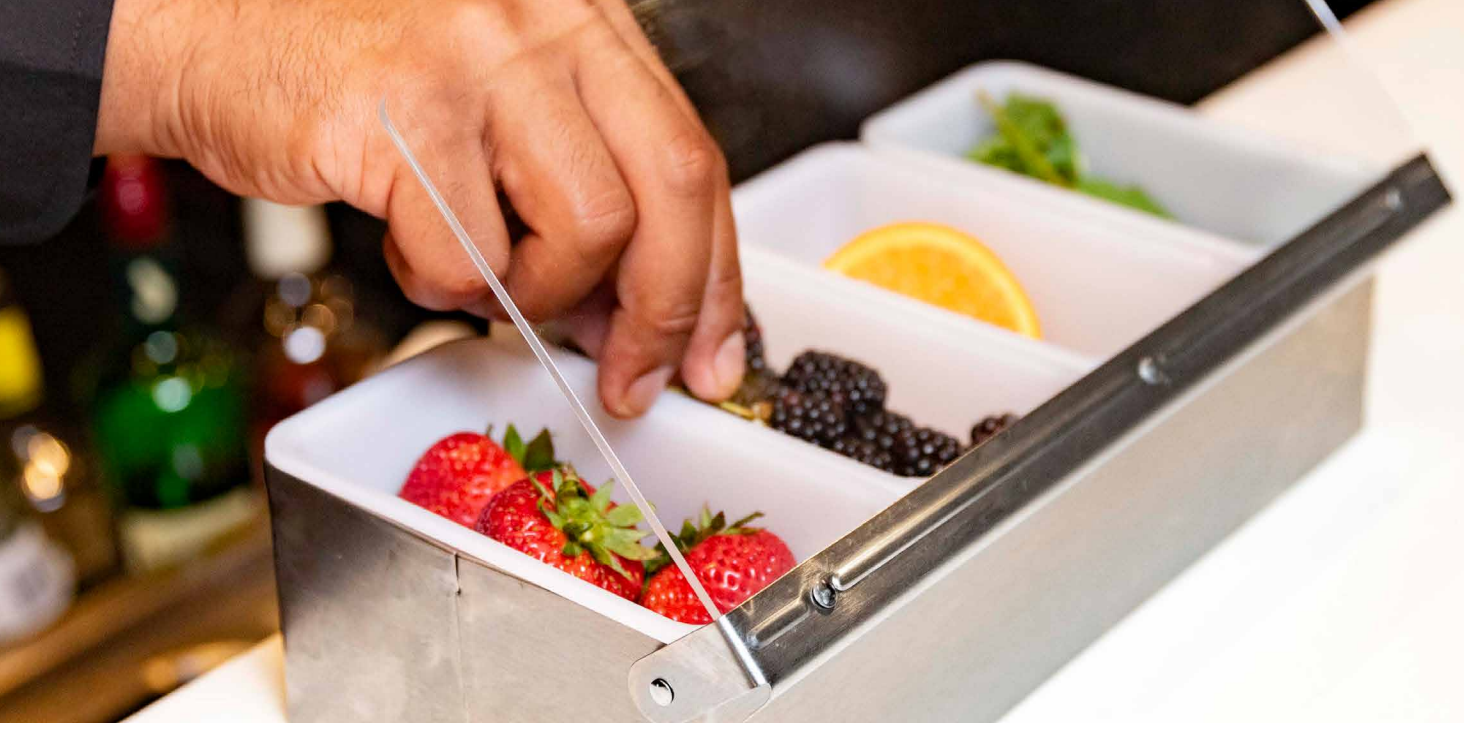
### Dough Roller Docker

Item #	Description	UOM	Dimensions
PZ-DD5704	5" x 1.75" Plastic Barrel, 3/8" Embedded Stainless Pins, Stainless Steel	EA	9" x 6" x 3"

# Bar Supplies

- Bar Tools
- Bottle Openers & Corkscrews
- Condiment Dispenser
- Pitchers
- Serving Trays
- Tray Stands
- Wine Buckets & Stands
- Wine Glass Hangers





Mix, pour, and serve with confidence—our barware is designed to keep the drinks flowing and the presentation flawless, shift after shift.



DCD-6BK



DCD-4BK

**Condiment Dispensers**

Item #	Description	UOM	Dimensions
DCD-4BK	4-Compartment with Lid	EA	20" x 6" x 4"
DCD-6BK	6-Compartment with Lid	EA	20" x 6" x 4"



SSCH-6



SSCH-4

**Stainless Steel Condiment Dispensers**

Item #	Description	UOM	Dimensions
SSCH-4	4-Compartment, with Clear Lid	EA	12" x 6" x 4"
SSCH-6	6-Compartment, with Clear Lid	EA	18" x 6" x 4"



BC-4ST

**Bar Caddy**

Item #	Description	UOM	Dimensions
BC-4ST	4-Compartment, White with Lid	EA	19" x 6" x 3"



BO-1270

**Bar Organizer Black**

Item #	Description	UOM	Dimensions
BO-1270	6-Compartment	EA	9" x 6" x 4"



BAR-3PC

MBR-3PC

## Bar Shakers

Item #	Description	UOM	Dimensions
BAR-3PC	3 Pc Set: 30 oz Shaker, Strainer & Jigger, Stainless Steel	EA	4" x 4" x 10"
BS-30	30 oz, Stainless Steel	EA	4" x 4" x 7"
MBR-3PC	3 pc Mini Set: 12 oz Shaker, Strainer & Jigger, Stainless Steel	EA	3" x 3" x 8"
MBS-16	16 oz Mini, Stainless Steel	EA	3" x 3" x 5"
MC-7	30 oz Malt Cup, Stainless Steel	EA	4" x 4" x 7"



BOT-8

KCP-1

## Bottle Openers

Item #	Description	UOM
BOT-8	Flat Bottle Opener, Stainless Steel	EA
KCP-1	Can Punch Bottle Opener, Nickel Plated	EA



BST-22/PKG

LLS-24

BS-90/PKG

WMD-8/PKG



ICH-8

GR-100

## Bar Tools

Item #	Description	UOM
BS-90/PKG	Bar Spoons, Pack of 6, Stainless Steel	PKG
BST-22/PKG	Bar Strainer, 4-Prong, Stainless Steel	PKG
GR-100	Collapsible Three Tray Glass Rimmer, Black	EA
ICH-8	6-Pointed Ice Chipper, Wooden Handle	EA
LLS-24	Lemon/Lime Squeezer, Stainless Steel	EA
WMD-8/PKG	Wood Muddler, 2/Pkg.	PKG



JIG-2

## Jigger

Item #	Description	UOM
JIG-2	1 & 1.5 oz Jigger, Stainless Steel	EA



PLCS-777

WCS-7

WCS-777

## Corkscrews

Item #	Description	UOM
WCS-777	Heavy Duty Waiter's Cork Screw, Black	EA
PLCS-777	Waiter's Cork Screw, Black, Imprintable	EA
WCS-7	Winged Corkscrew, Chrome Plated	EA



ATD-4S

## Acrylic Toothpick Dispenser

Item #	Description	UOM	Dimensions
ATD-4S	Toothpick Dispenser	EA	4" x 4" x 6"



SAN-BP60CL

SAN-P63

SAN-P35

### Clear Plastic Pitchers

Item #	Description	UOM	Dimensions
SAN-P35	32 oz, Bouncer Style, Clear Plastic	EA	4" x 4" x 7"
SAN-P63	60 oz, Bouncer Style, Clear Plastic	EA	5" x 5" x 8"
SAN-BP60CL	60 oz, Tapered, Clear Plastic	EA	8" x 8" x 9"



FBS-28

SWB-28

### Wine Buckets Stands

Item #	Description	UOM	Dimensions
FBS-28	Folding, Chrome Steel, holds WB-8	EA	12" x 12" x 31"
SWB-28	Brass Accented, Chrome Steel, holds WB-8	EA	15" x 15" x 31"



WB-8

WBF-4

### Wine Buckets

Item #	Description	UOM	Dimensions
AWC-9	4 qt Insulated, Clear Acrylic	EA	6" x 5" x 10"
WB-8	8 qt Mirror Finish, Stainless Steel	EA	9" x 9" x 10"
WBF-4	4 qt Mirror Finish, Stainless Steel	EA	8" x 8" x 8"



BRGH-24/PKG

BRGH-16/PKG

BRGH-10/PKG

### Wine Glass Hanger

Item #	Description	UOM	Dimensions
BRGH-24/PKG	24" Brass Wire	PKG	24" x 5" x 2"
BRGH-16/PKG	16" Brass Wire	PKG	16" x 5" x 2"
BRGH-10/PKG	10" Brass Wire	PKG	10" x 5" x 2"



WTS-38

WTS-32

TST-2B

### Tray Stands

Item #	Description	UOM	Dimensions
TST-2B	32" Chrome Steel	EA	19" x 16" x 32"
WTS-32	32" Non-slip, Mahogany	EA	17" x 17" x 32"
WTS-38	38" Non-slip, Mahogany	EA	18" x 17" x 39"



## Oval Serving & Catering Trays



Item #	Description	Dimensions	UOM
NST-2025BK/OVAL	25" Fiberglass Non-Skid, Black	25" x 20" x 1"	EA
NST-2025BR/OVAL	25" Fiberglass Non-Skid, Brown	25" x 20" x 1"	EA
NST-2227BK/OVAL	27" Fiberglass Non-Skid, Black	27" x 22" x 1"	EA
NST-2227BR/OVAL	27" Fiberglass Non-Skid, Brown	27" x 22" x 1"	EA
NST-2429BK/OVAL	29" Fiberglass Non-Skid, Black	29" x 24" x 1"	EA
NST-2429BR/OVAL	29" Fiberglass Non-Skid, Brown	29" x 24" x 1"	EA



## Round Serving & Catering Trays



Item #	Description	Dimensions	UOM
NST-11BK/ROUND	11" Fiberglass Non-Skid, Black	11" x 11" x 1"	EA
NST-11BR/ROUND	11" Fiberglass Non-Skid, Brown	11" x 11" x 1"	EA
NST-14BK/ROUND	14" Fiberglass Non-Skid, Black	14" x 14" x 1"	EA
NST-14BR/ROUND	14" Fiberglass Non-Skid, Brown	14" x 14" x 1"	EA
NST-16BK/ROUND	16" Fiberglass Non-Skid, Black	16" x 16" x 1"	EA
NST-16BR/ROUND	16" Fiberglass Non-Skid, Brown	16" x 16" x 1"	EA

# Buffetware

- Chafing Dishes & Pans
- Coffee Percolators & Urns
- Beverage Dispensers
- Beverage Warmers





GRG-6



GRY-4



GRV-8



ROL-1

## Adcraft Classics Chafing Dishes

Item #	Description	Dimensions	UOM
GRG-6	6 qt Gold Plate Regent Oval Chafer, Stainless Steel	22" x 12" x 11"	EA
GRV-8	8 qt Gold Riviera Oblong Chafer, Stainless Steel	23" x 14" x 14"	EA
GRY-4	4 qt Gold Royal Round Chafer, Stainless Steel	17" x 13" x 12"	EA
ROL-1	8 qt Grand Prix Roll Top, Stainless Steel	26" x 14" x 16"	EA

From brunch to banquets—our stylish, durable chafing solutions are made to turn heads and keep food perfectly served, every time.



DIV-200F



DIV-200F4



DWP-200

## Pans

Item #	Description	Dimensions	UOM
DWP-200	Oblong Dripless Pan, Stainless Steel	5" x 15" x 23"	EA
DIV-200F4	Divided Food Pan, Stainless Steel	4" x 13" x 21"	EA
DIV-200F	Divided Food Pan, Stainless Steel	4" x 13" x 21"	EA



LI-8



LI-5



LAF-7



CAM-5

### Long Island Chafers

Item #	Description	UOM	Dimensions
LI-8	8 qt Oblong Chafer, Stainless Steel	EA	10" x 16" x 25"
LI-5	5 qt Round Chafer, Stainless Steel	EA	11" x 15" x 11"

### Sculptured Series Chafers

Item #	Description	UOM	Dimensions
CAM-5	5 qt Camelot Round Chafer, Stainless Steel	EA	17" x 13" x 16"
LAF-7	8 qt Lafayette Oblong Chafer, Stainless Steel	EA	26" x 14" x 16"



LI-8FP



LI-5FP



LI-8WP



LI-5WP



CAM-5FP

### Long Island Chafer Pans

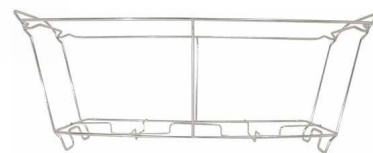
Item #	Description	UOM	Dimensions
LI-8WP	8 qt Oblong Water Pan, Stainless Steel	EA	21" x 13" x 4"
LI-8FP	8 qt Oblong Food Pan, Stainless Steel	EA	21" x 13" x 3"
LI-5FP	5 qt Round Food Pan, Stainless Steel	EA	2" x 15" x 15"
LI-5WP	5 qt Round Water Pan, Stainless Steel	EA	15" x 15" x 5"

### Sculptured Series Chafer Pans

Item #	Description	UOM	Dimensions
CAM-5FP	5 qt Camelot Round Food Pan, Stainless Steel	EA	13" x 13" x 4"



FCD-8



WCS-S

### Chafers

Item #	Description	UOM	Dimensions
FCD-8	8 qt Folding Chafing Dish, Stainless Steel	EA	23" x 14" x 12"
WCS-S	Oblong Wire Chafer Frame, 4" Deep Pan	EA	17" x 10" x 7"

NEP-5



## Beverage Dispenser

Item #	Description	UOM	Dimensions
NEP-5	7.5 qt Neptune Juice Dispenser	EA	13" x 9" x 21"



Buffetware



CP-100



CP-60



CP-40



## Coffee Percolator

Item #	Description	Voltage	Wattage	Dimensions
CP-100	100 Cup, Stainless Steel	120V	1350W	13" x 11" x 23"
CP-60	60 Cup, Stainless Steel	120V	1350W	13" x 11" x 21"
CP-40	40 Cup, Stainless Steel	120V	1350W	11" x 9" x 19"



CUA100



CUA55



## Coffee Urns

Item #	Description	Volts	Watt	Dimensions
CUA100	100 Cup, Aluminum	120V	1500W	14" x 14" x 23"
CUA55	55 Cup, Aluminum	120V	1500W	13" x 13" x 18"



HCD-10



HCD-5

## Hot Chocolate Dispenser

Item #	Description	Volts	Watt	Dimensions
HCD-10	10L Hot Beverage Dispenser, Black	120V	1000W	16" x 11" x 23"
HCD-5	5L Hot Beverage Dispenser, Black	120V	1000W	16" x 11" x 18"



UB-289

**Pot**



Item #	Description	Volts	Watt	Dimensions
UB-289	3.8 gal Airpot Coffee Brewer	115V	1450W	15" x 8" x 23"

Engineered for self-service environments, our coffee and tea solutions support high-volume buffet setups with reliable performance and professional presentation.



**Leverpump Airpot Beverage Dispensers**



Item #	Description	UOM	Dimensions
APLE19	1.9L Screwtop, Stainless Steel	EA	6" x 8" x 16"
APLE22	2.2L Screwtop, Stainless Steel	EA	6" x 8" x 16"
APLE25	2.5L Screwtop, Stainless Steel	EA	6" x 8" x 16"
APLE30	3.0L Screwtop, Stainless Steel	EA	6" x 8" x 17"



APE22

**Airpot Beverage Dispensers**

Item #	Description	UOM	Dimensions
APE22	2.2L, Stainless Steel	EA	6" x 8" x 16"



FVFE1000

FVFE1500

FVFE2000



### Full Size Vacuum Flask

Item #	Description	UOM	Dimensions
FVFE1000	1000 ml, Stainless Steel	EA	6" x 6" x 8"
FVFE1500	1500 ml, Stainless Steel	EA	6" x 6" x 9"
FVFE2000	2000 ml, Stainless Steel	EA	6" x 6" x 10"



SLVFE1000

SLVFE750

### Slim Vacuum Flask Beverage Dispenser

Item #	Description	UOM	Dimensions
SLVFE1000	1000 ml, Stainless Steel	EA	4" x 6" x 9"
SLVFE750	750 ml, Stainless Steel	EA	4" x 6" x 11"



SP-20BK

SP-20WH

### Insulated Beverage Dispenser

Item #	Description	UOM	Dimensions
SP-20BK	20 oz, Black	EA	6" x 5" x 8"
SP-20WH	20 oz, White	EA	6" x 5" x 8"
SP-40BK	40 oz, Black	EA	8" x 6" x 10"
SP-40WH	40 oz, White	EA	8" x 6" x 10"
SP-64BK	64 oz, Black	EA	9" x 7" x 11"
SP-64WH	64 oz, White	EA	9" x 7" x 11"



CDP-BK

### Coffee Decanter

Item #	Description	UOM	Dimensions
CDP-BK	64 oz Coffee Decanter, Black	EA	7" x 7" x 7"
CDP-OR	64 oz Coffee Decanter, Orange	EA	7" x 7" x 7"



WP-2

### Coffee & Tea

Item #	Description	Volts	Watt	Dimensions
WP-2	Dual Warmer Plate	120V	200W	15" x 9" x 3"

# Cookware

- Hercules Non-Stick Fry Pans
- Hercules Aluminum Fry Pans
- Hyperion Pots & Pans
- Titan Series Pots & Pans & Lids
- Pan Sleeves
- Cooking Grates
- Fryer Baskets





**HERCULES**  
Professional Series 3004

Constructed of 3.5mm thick 3004 aluminum which is the strongest and longest lasting aluminum in the food service industry.

Advanced design incorporates the best attributes of all leading commercial fry pans, providing unsurpassed durability.



XCL-14FP/4



XCL-12FP/4



XCL-10FP/4



XCL-8FP/4



XCL-7FP/4

## HERCULES Non-Stick Fry Pans



Item #	Description	Dimensions	UOM	Item Weight lbs	Shipping Weight lbs
XCL-14FP/4	14", Non-Stick Finish, Silicone Sleeve	27" x 15" x 4"	EA	4.2	4.2
XCL-12FP/4	12", Non-Stick Finish, Silicone Sleeve	23" x 13" x 4"	EA	3.3	3.3
XCL-10FP/4	10", Non-Stick Finish, Silicone Sleeve	19" x 11" x 3"	EA	2.3	2.3
XCL-8FP/4	8", Non-Stick Finish, Silicone Sleeve	15" x 9" x 3"	EA	1.5	1.5
XCL-7FP/4	7", Non-Stick Finish, Silicone Sleeve	13" x 7" x 3"	EA	1.2	1.2



HER-14FP/4



HER-12FP/4



HER-10FP/4



HER-8FP/4

## HERCULES Aluminum Fry Pans



Item #	Description	Dimensions	UOM	Item Weight lbs	Shipping Weight lbs
HER-14FP/4	14", Natural Finish, Silicone Sleeve	27" x 14" x 5"	EA	3.9	3.9
HER-12FP/4	12", Natural Finish, Silicone Sleeve	22" x 13" x 4"	EA	3.2	3.2
HER-10FP/4	10", Natural Finish, Silicone Sleeve	19" x 11" x 4"	EA	2.2	2.2
HER-8FP/4	8", Natural Finish, Silicone Sleeve	15" x 9" x 3"	EA	1.5	1.5



The **Hyperion3®** Collection is constructed of premium 3003 aluminum for superior heat transfer.



H3-SP140

H3-SP32



H3-SP24C

H3-SP20C

### Aluminum Stock Pots



Item #	Description	UOM
H3-SP160	160 qt, Natural Finish	EA
H3-SP140	140 qt, Natural Finish	EA
H3-SP120	120 qt, Natural Finish	EA
H3-SP100	100 qt, Natural Finish	EA
H3-SP80	80 qt, Natural Finish	EA
H3-SP60	60 qt, Natural Finish	EA
H3-SP50	50 qt, Natural Finish	EA
H3-SP40	40 qt, Natural Finish	EA
H3-SP32	32 qt, Natural Finish	EA
H3-SP24	24 qt, Natural Finish	EA
H3-SP20	20 qt, Natural Finish	EA
H3-SP16	16 qt, Natural Finish	EA
H3-SP12	12 qt, Natural Finish	EA
H3-SP8	8 qt, Natural Finish	EA

### Aluminum Cookware Covers



Item #	Description	UOM
H3-SA20C	13-5/8" Cover, fits H3-SA20	EA
H3-SP140C	22-3/4" Cover, fits H3-SP140, H3-SP160	EA
H3-TSP10C	12" Cover, fits H3-TSP10	EA
H3-SP120C	22" Cover, fits H3-SP120	EA
H3-TSP7C	10-3/4" Cover, fits H3-TSP7	EA
H3-SP100C	20" Cover, fits H3-SP100, H3-SA60, H3-BR28	EA
H3-TSP5C	9-5/8" Cover, fits H3-TSP5	EA
H3-SP80C	18-7/8" Cover, fits H3-SP80, H3-SB54	EA
H3-TSP4C	8-7/8" Cover, fits H3-TSP4	EA
H3-SP60C	17-1/2" Cover, fits H3-SP60	EA
H3-TSP3C	8-1/2" Cover, fits H3-TSP3	EA
H3-SP50C	16" Cover, fits H3-SP50, H3-SA34, H3-BR18	EA
H3-TSP2C	7-5/8" Cover, fits H3-TSP2, H3-8FP, H3-XCL8	EA
H3-SP40C	14-1/2" Cover, fits H3-SP40, H3-SB25	EA
H3-TSP1C	5-3/4" Cover, fits H3-TSP1	EA
H3-SP32C	14" Cover, fits H3-SP32, H3-SA26, H3-BR15, H3-SAU75, H3-14FP, H3-XCL14	EA
H3-SP24C	12-3/4" Cover, fits H3-SP24, H3-SB11	EA
H3-SP20C	11-7/8" Cover, fits H3-SP20, H3-SA14, H3-SAU5, H3-12FP, H3-XCL12	EA
H3-SP16C	11-1/8" Cover, fits H3-SP16	EA
H3-SP12C	10" Cover, fits SP12, H3-10FP, H3-XCL10	EA
H3-SP8C	9-1/8" Cover, fits H3-SP8	EA



H3-SA60

H3-SA34

### Aluminum Sauce Pots



Item #	Description	UOM
H3-SA60	60 qt, Natural Finish	EA
H3-SA40	40 qt, Natural Finish	EA
H3-SA34	34 qt, Natural Finish	EA
H3-SA26	26 qt, Natural Finish	EA
H3-SA20	20 qt, Natural Finish	EA
H3-SA14	14 qt, Natural Finish	EA

Providing maximum value, the **Hyperion3®** Collection offers a complete line of NSF approved cookware to meet the demands of your busy kitchen. Included in the collection are stock pots, saute pans, steamer baskets, sauce pots, brazier pots, pans with fryer hook, tapered sauce pans, natural finish fry pans, and Excalibur coated fry pans. Each piece and covers sold separately.



H3-SB54



H3-BR28



H3-BR24

### Aluminum Steam Baskets



Item #	Description	UOM
H3-SB54	60 qt, for 80 qt Pot, Aluminum	EA
H3-SB39	39 qt, for 60 qt Pot, Aluminum	EA
H3-SB25	26 qt, for 40 qt Pot, Aluminum	EA
H3-SB11	12 qt, for 24 qt Pot, Aluminum	EA

### Hyperion3 Aluminum Brazier Pots



Item #	Description	UOM
H3-BR28	28 qt, Natural Finish	EA
H3-BR24	24 qt, Natural Finish	EA
H3-BR18	18 qt, Natural Finish	EA
H3-BR15	15 qt, Natural Finish	EA



H3-TSP3



H3-TSP2

### Aluminum Sauce Pans



Item #	Description	UOM
H3-TSP3	3 qt, Natural Finish	EA
H3-TSP2	2 qt, Natural Finish	EA



H3-SAU75

H3-SAU5

### Aluminum Saute Pans



Item #	Description	UOM
H3-SAU75	7.5 qt, Natural Finish	EA
H3-SAU5	5 qt, Natural Finish	EA



Designed for optimal heat distribution and long-lasting performance in demanding foodservice environments.



H3-FP5



BFW-1125

BFW-950

### Fryers / Pasta Pans



Item #	Description	UOM
H3-FP10	10 qt, Fry Hook Sauce Pan, Aluminum	EA
H3-FP7	7 qt, Fry Hook Sauce Pan, Aluminum	EA
H3-FP5	5 qt, Fry Hook Sauce Pan, Aluminum	EA

### Four Mesh Fryer Baskets

Item #	Description	UOM
BFW-1125	11.25" Round, 6" Deep, Wire Mesh, Nickel Plated	EA
BFW-950	9.5" Round, 5.75" Deep, Wire Mesh, Nickel Plated	EA
BFW-850	8.5" Round, 4.25" Deep, Wire Mesh, Nickel Plated	EA



BFSM-850



BFSM-1125



BFSM-950

### Six Mesh Fryer Baskets

Item #	Description	UOM
BFSM-1125	11.25" Round, 6" Deep, Nickel Plated	EA
BFSM-950	9.5" Round, 5.75" Deep, Nickel Plated	EA
BFSM-850	8.5" Round, 4.25" Deep, Nickel Plated	EA



H3-TSP10

### Hyperion3 Aluminum Tapered Pans



Item #	Description	UOM
H3-TSP10	10 qt, Natural Finish	EA
H3-TSP7	7 qt, Natural Finish	EA
H3-TSP5	5 qt, Natural Finish	EA
H3-TSP4	4 qt, Natural Finish	EA
H3-TSP1	1.5 qt, Natural Finish	EA



H3-XCL14



H3-XCL12



H3-XCL12



H3-XCL8



H3-XCL7

## Hyperion Non-Stick Fry Pans



Item #	Description	Dimensions	UOM	Item Weight lbs	Shipping Weight lbs
H3-XCL14	14", Non-Stick Finish	26.50" x 14.50" x 4.00"	EA	3.8	3.9
H3-XCL12	12", Non-Stick Finish	22.00" x 12.50" x 3.00"	EA	3.0	3.3
H3-XCL10	10", Non-Stick Finish	18.00" x 10.50" x 3.00"	EA	3.0	2.1
H3-XCL8	8", Non-Stick Finish	14.50" x 8.50" x 3.00"	EA	1.8	1.5
H3-XCL7	7", Non-Stick Finish	13.00" x 7.50" x 3.00"	EA	1.1	1.1



H3-14FP



H3-12FP



H3-10FP



H3-8FP

## Hyperion Aluminum Fry Pans



Item #	Description	Dimensions	UOM	Item Weight lbs	Shipping Weight lbs
H3-14FP	14", Natural Finish	26.50" x 14.50" x 4.53"	EA	3.9	3.9
H3-12FP	12", Natural Finish	22.00" x 12.53" x 4.14"	EA	2.9	2.9
H3-10FP	10", Natural Finish	18.00" x 10.56" x 2.90"	EA	2.1	2.1
H3-8FP	8", Natural Finish	14.50" x 8.51" x 2.96"	EA	1.4	1.4

# TITAN<sup>®</sup>

SERIES

This full line of NSF certified premium 18/8 stainless steel induction cookware has a tri-ply bottom consisting of two layers of stainless steel surrounding an aluminum core.

Cookware



## Induction Brazier Pots With Cover



Item #	Description	UOM
BRSS-30	30 qt, Stainless Steel	EA
BRSS-25	25 qt, Stainless Steel	EA
BRSS-20	20 qt, Stainless Steel	EA
BRSS-15	15 qt, Stainless Steel	EA



## Induction Stock Pots With Cover



Item #	Description	UOM
SSP-100	100 qt, Stainless Steel	EA
SSP-80	80 qt, Stainless Steel	EA
SSP-60	60 qt, Stainless Steel	EA
SSP-40	40 qt, Stainless Steel	EA
SSP-32	32 qt, Stainless Steel	EA
SSP-24	24 qt, Stainless Steel	EA
SSP-20	20 qt, Stainless Steel	EA
SSP-16	16 qt, Stainless Steel	EA
SSP-12	12 qt, Stainless Steel	EA
SSP-8	8 qt, Stainless Steel	EA



FPSI-12EX



FPSI-10EX



FPSI-8EX



## Excalibur Induction Fry Pans

Item #	Description	Dimensions	UOM
FPSI-12EX	12", Non-Stick, Stainless Steel	25.50" x 13.25" x 3.50"	EA
FPSI-10EX	10", Non-Stick, Stainless Steel	19.00" x 10.00" x 3.00"	EA
FPSI-8EX	8", Non-Stick, Stainless Steel	17.00" x 8.50" x 3.00"	EA



FPSI-12



FPSI-10



FPSI-8



## Induction Fry Pans

Item #	Description	Dimensions	UOM
FPSI-12	12", Natural Finish, Stainless Steel	25.50" x 13.25" x 3.50"	EA
FPSI-10	10", Natural Finish, Stainless Steel	19.00" x 9.65" x 2.89"	EA
FPSI-8	8", Natural Finish, Stainless Steel	17.00" x 8.50" x 3.00"	EA

The Titan® Series features a complete range of cookware including stock pots, brazier pots, sauce pans, natural and non-stick frying pans.



SPS-10

SPS-35

SPS-45

SPS-75



## Induction Sauce Pans With Cover

Item #	Description	Dimensions	UOM
SPS-75	7.5 qt, Stainless Steel	6.3" x 9.45" x 6.3"	EA
SPS-45	4.5 qt, Stainless Steel	5.51" x 7.87" x 5.51"	EA
SPS-35	3.5 qt, Stainless Steel	4.13" x 7.87" x 4.13"	EA
SPS-10	10 qt, Stainless Steel	6.1" x 11.02" x 6.1"	EA
SPS-2	2 qt, Stainless Steel	3.74" x 6.3" x 3.74"	EA



SXS-7PC

PH-2



PASTA-4

PASTA-INS

## Cookware Sets & Accessories



Item #	Description	UOM
SXS-7PC	7-Piece Deluxe Set, 18/8 Stainless Steel	EA
PH-2	Pot Hook, Fits 2" x 3/16" & 2" x 1/4" flat bars, Stainless Steel	EA

## Pastabilities Pasta Cooker

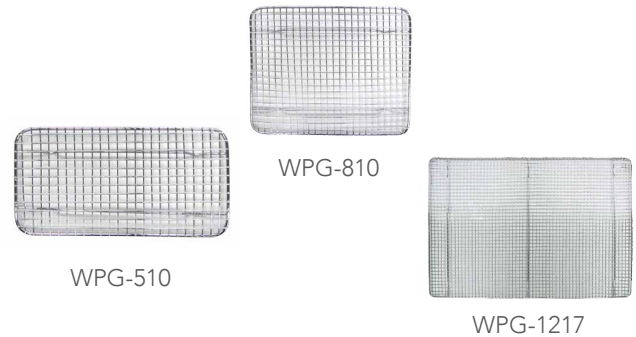
Item #	Description	UOM	Dimensions
PASTA-4	5 pc Set, Aluminum	EA	14" x 14" x 7"
PASTA-INS	Individual Inset, Aluminum	EA	8" x 6" x 7"



RMS-1/4

RMS-3/4

RMS-2/4



WPG-510

WPG-810

WPG-1217

## Removable Silicone Sleeves



Item #	Description	UOM
RMS-3/4	Large Red Sleeve, fits: H3-TSP7, H3-TSP10, and 10" & 14" fry pans	EA
RMS-2/4	Medium Red Sleeve, fits: H3-TSP2,3,4,5 and 10" & 12" fry pans	EA
RMS-1/4	Small Red Sleeve, fits: H3-TSP1, 7" & 8" fry pans	EA

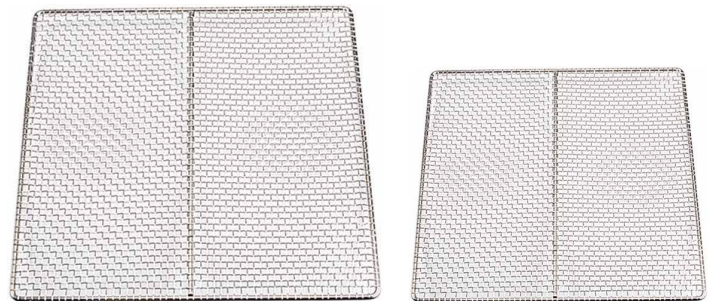
## Cooking Grates

Item #	Description	UOM	Dimensions
WPG-810	7-3/4" x 10" footed, fits Half-Size Pans	EA	10" x 8" x 1"
WPG-1217	12" x 16-1/2" footed, fits Full-Size Pans	EA	16" x 12" x 1"
WPG-510	5" x 10-1/2" footed, fits Third-Size Pans	EA	10" x 5" x 1"



WPG-1624

WPG-1018



GR-18H

GR-14H

## Chrome Cooking Grates

Item #	Description	UOM	Dimensions
WPG-1624	16" x 24" footed, fits Half-Size Pans	EA	24" x 16" x 1"
WPG-1018	10" x 18" footed, fits Full-Size Pans	EA	18" x 10" x 1"

## Square Tube Cooking Grates

Item #	Description	UOM	Dimensions
GR-18H	17-1/2" Sq, Nickel-plated	EA	18" x 18" x 0"
GR-14H	13-3/4" Sq, Nickel-plated	EA	14" x 14" x 0"

Available in multiple sizes our rectangular fry baskets are designed for compatibility with most commercial fryers and feature color-coded grips for streamlined workflow.



DF-FB



FBR-16315



FBR-13558



FBR-13612



FBR-12651



FBR-11571



FBR-16834



FBR-13912

## Fryer Baskets

Item #	Description	UOM	Dimensions
DF-FB	Twin Slim Baskets for DF12LS & DF12LS, Stainless Steel	SET	9" x 4" x 5.5"
FBR-11571	Black Handle Basket, 11" x 5-3/8" x 4-1/8" Deep, Nickel Plated	EA	23.03" x 5.51" x 8.86"
FBR-12651	Orange Handle Basket, 12-1/8" x 6-1/4" x 5-5/16" Deep, Nickel Plated	EA	23.82" x 6.50" x 9.25"
FBR-13558	Blue Handle Basket, 13-1/4" x 5-5/8" x 5-5/8" Deep, Nickel Plated	EA	25.79" x 5.63" x 10.83"
FBR-13612	Red Handle Basket, 12-7/8" x 6-1/2" x 5-3/8" Deep, Nickel Plated	EA	25.39" x 6.50" x 11.02"
FBR-13912	Gray Handle Basket, 13-1/4" x 9-1/2" x 6" Deep, Nickel Plated	EA	25.79" x 9.45" x 11.02"
FBR-16315	Green Handle Basket, 13-1/4" x 6-1/2" x 5-7/8" Deep, Nickel Plated	EA	25.59" x 6.5" x 11.22"
FBR-16834	Yellow Handle Basket, 17" x 8-1/4" x 6" Deep, Nickel Plated	EA	30.71" x 8.27" x 10.43"

# Cutting Boards & Mats

- Thermoplastic Cutting Boards
- Multi-Colored Flexible Cutting Mats
- Wood Cutting Boards
- Cutting Board Racks





## 18x24 Thermoplastic Cutting Boards

Item #	Description	UOM
HDCB-1824/BU	Blue, High Density	EA
HDCB-1824/BN	Brown, High Density	EA
HDCB-1824/GN	Green, High Density	EA
HDCB-1824/RD	Red, High Density	EA
HDCB-1824/WH	White, High Density	EA
HDCB-1824/YL	Yellow, High Density	EA



## 15x20 Thermoplastic Cutting Boards

Item #	Description	UOM
HDCB-1520/BU	Blue, High Density	EA
HDCB-1520/BN	Brown, High Density	EA
HDCB-1520/GN	Green, High Density	EA
HDCB-1520/RD	Red, High Density	EA
HDCB-1520/WH	White, High Density	EA
HDCB-1520/YL	Yellow, High Density	EA



## 12x18 Thermoplastic Cutting Boards

Item #	Description	UOM
HDCB-1218/BU	Blue, High Density	EA
HDCB-1218/BN	Brown, High Density	EA
HDCB-1218/GN	Green, High Density	EA
HDCB-1218/RD	Red, High Density	EA
HDCB-1218/WH	White, High Density	EA
HDCB-1218/YL	Yellow, High Density	EA

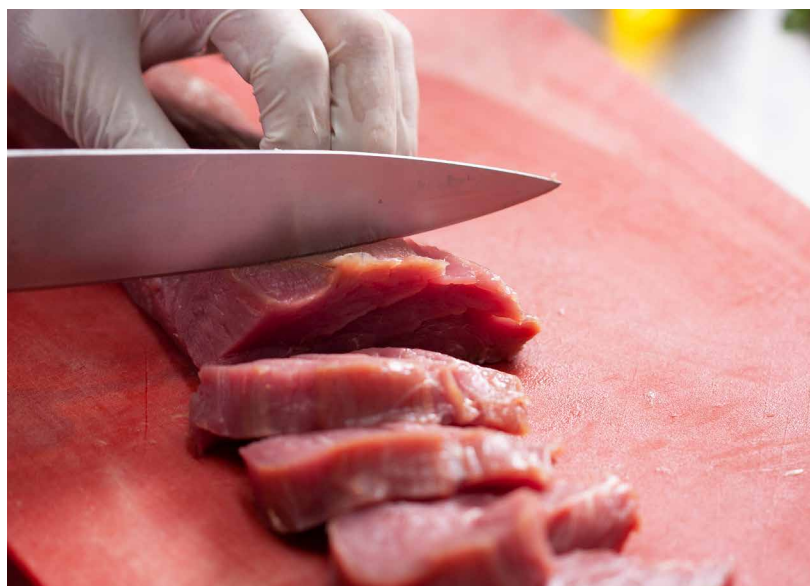
- Wide selection of thermoplastic and flexible cutting boards
- Color-coded options enhance food safety and HACCP compliance
- Flexible mats are lightweight, easy to store, and clean
- Racks help organize boards and maintain sanitation



## Multi Colored Flexible Cutting Mats



Item #	Description	UOM
FCCB-1824	18" x 24", Set of 6, Flexible	SET
FCCB-1520	15" x 20", Set of 6, Flexible	SET
FCCB-1218	12" x 18", Set of 6, Flexible	SET





CCB-1824/GN

### Thermoplastic Color Cutting Boards

Item #	Description	UOM
CCB-1824/GN	18" x 24", Green	EA
CCB-1520/BR	15" x 20", Brown	EA
CCB-1520/YL	15" x 20", Yellow	EA
CCB-1218/BU	12" x 18", Blue	EA
CCB-1218/YL	12" x 18", Yellow	EA



FCB-1520/W

FCB-1218/W

### White Flexible Cutting Mats



Item #	Description	UOM
FCB-1824/W	18" x 24", Set of 6, Flexible	SET
FCB-1520/W	15" x 20", Set of 6, Flexible	SET
FCB-1218/W	12" x 18", Set of 6, Flexible	SET



CBW-1830



WBB-1307

### Thermoplastic Cutting Boards



Item #	Description	UOM
CBW-1830	18" x 30", White	EA
CBW-610	6" x 10", White	EA

### Wood Cutting Boards

Item #	Description	UOM	Dimensions
WBB-1307	4" Handle Bread Board with Knife Slot	EA	13" x 8" x 1"



CBR-6BK



CBRS-6

### Cutting Board Racks

Item #	Description	UOM	Dimensions
CBR-6BK	6 Slot, Black	EA	10" x 12" x 9"
CBRS-6	6 Slot, Stainless Steel	EA	10" x 10" x 11"

# Flatware

- Tableware Cutlery
- Serving Spoons & Sets
- Cake Serving Sets



## #53 Windsor

Item #	Description	UOM	Length
W53-DF/B	Dinner Fork, Stainless Steel	PKG	6.93
W53-OF/B	Oyster Fork, Stainless Steel	PKG	5.51
W53-SF/B	Salad Fork, Stainless Steel	PKG	6.00
W53-DS/B	Oval Soup Spoon, Stainless Steel	PKG	7
W53-LTS/B	Teaspoon, Stainless Steel	PKG	5.83



## #54 Windsor

Item #	Description	UOM	Length
W54-BLS/B	Bouillon Spoon, Stainless Steel	PKG	6.02
W54-DF/B	Dinner Fork, Stainless Steel	PKG	7.09
W54-SF/B	Salad Fork, Stainless Steel	PKG	6
W54-DS/B	Oval Soup Spoon, Stainless Steel	PKG	6.69
W54-LTS/B	Teaspoon, Stainless Steel	PKG	6.18



## Alissa

Item #	Description	UOM	Length
AL275-DF/B	Dinner Fork, Stainless Steel	PKG	7.83
AL275-DK/B	Dinner Knife, Stainless Steel	DOZ	8.74
AL275-TBS/B	Table Serve Spoon, Stainless Steel	DOZ	8.82
AL275-DS/B	Oval Soup Spoon, Stainless Steel	PKG	7.87
AL275-LTS/B	Teaspoon, Stainless Steel	PKG	6.5



## Avalon

Item #	Description	UOM	Length
AV-BLS/B	Bouillon Spoon, Stainless Steel	DOZ	5.87
AV-BK/B	Butter Spreader, Stainless Steel	DOZ	6.78
AV-DTS/B	Demitasse Spoon, Stainless Steel	DOZ	4.53
AV-DF/B	Dinner Fork, Stainless Steel	DOZ	7.28
AV-DK/B	Dinner Knife, Stainless Steel	DOZ	8.27
AV-ITS/B	Iced Tea Spoon, Stainless Steel	DOZ	7.4
AV-OF/B	Oyster Fork, Stainless Steel	DOZ	5.67
AV-SF/B	Salad Fork, Stainless Steel	DOZ	6.14
AV-TBS/B	Table Serving Spoon, Stainless Steel	DOZ	8.27
AV-DS/B	Oval Soup Spoon, Stainless Steel	DOZ	7.17
AV-TBF/B	Table Fork, Stainless Steel	DOZ	8.11
AV-TBK/B	Table Knife, Hollow Handle, Stainless Steel	DOZ	9.06
AV-LTS/B	Teaspoon, Stainless Steel	DOZ	6.06



## Baguette

Item #	Description	UOM	Length
BA-BLS/B	Bouillon Spoon, Stainless Steel	DOZ	6
BA-DTS/B	Demitasse Spoon, Stainless Steel	DOZ	4.5
BA-DF/B	Dinner Fork, Stainless Steel	DOZ	7.17
BA-DK/B	Dinner Knife, Stainless Steel	DOZ	8.62
BA-OF/B	Oyster Fork, Stainless Steel	DOZ	5.51
BA-SF/B	Salad Fork, Stainless Steel	DOZ	6.3
BA-TBS/B	Table Serving Spoon, Stainless Steel	DOZ	9.06
BA-DS/B	Oval Soup Spoon, Stainless Steel	DOZ	7.20
BA-TBF/B	Table Fork, Stainless Steel	DOZ	8.58
BA-ITS/B	Iced Tea Spoon, Stainless Steel	DOZ	7.5
BA-LTS/B	Teaspoon, Stainless Steel	DOZ	5.98

## Concord

Item #	Description	UOM	Length
CON-DF/B	Dinner Fork, Stainless Steel	PKG	7.32
CON-DK/B	Dinner Knife, Stainless Steel	DOZ	8.50
CON-SF/B	Salad Fork, Stainless Steel	PKG	6.5
CON-TBS/B	Table Serving Spoon, Stainless Steel	DOZ	8.27
CON-DS/B	Oval Soup Spoon, Stainless Steel	PKG	7.17
CON-LTS/B	Teaspoon, Stainless Steel	PKG	6.22

## Dominion

Item #	Description	UOM	Length
D78-DF/B	Dinner Fork, Stainless Steel	PKG	7.09
D42-DK/B	Dinner Knife, Stainless Steel	DOZ	7.91
D78-SF/B	Salad Fork, Stainless Steel	PKG	6
D78-DS/B	Oval Soup Spoon, Stainless Steel	PKG	7
D78-LTS/B	Teaspoon, Stainless Steel	PKG	6

## Fan

Item #	Description	UOM	Length
FAN-DF/B	Dinner Fork, Stainless Steel	DOZ	7.5
FAN-DK/B	Dinner Knife, Stainless Steel	DOZ	8.5
FAN-DS/B	Oval Soup Spoon, Stainless Steel	DOZ	7
FAN-SF/B	Salad Fork, Stainless Steel	DOZ	7
FAN-TBF/B	Fan Table Fork, Stainless Steel	DOZ	8.5
FAN-TBK/B	Table Knife, Serrated, Stainless Steel	DOZ	9.65
FAN-TBS/B	Table Serving Spoon, Stainless Steel	DOZ	8.25
FAN-LTS/B	Teaspoon, Stainless Steel	DOZ	6.5



## Monte Carlo

Item #	Description	UOM	Length
MC240-DF/B	Dinner Fork, Stainless Steel	PKG	7.4
MC240-DK/B	Dinner Knife, Stainless Steel	DOZ	8.27
MC240-SF/B	Salad Fork, Stainless Steel	PKG	6
MC240-DS/B	Oval Soup Spoon, Stainless Steel	PKG	7.4
MC240-LTS/B	Teaspoon, Stainless Steel	PKG	6.14



## Panam

Item #	Description	UOM	Length
PAM-LK	Luncheon Knife, Stainless Steel	DOZ	7
PAM-SF	Salad Fork, Stainless Steel	DOZ	6.5
PAM-LTS	Teaspoon, Stainless Steel	DOZ	6.00



## Plaza

Item #	Description	UOM	Length
PL-BLS/B	Bouillon Spoon, Stainless Steel	PKG	6.25
PL-DF/B	Dinner Fork, Stainless Steel	PKG	7.68
PL-DK/B	Dinner Knife, Stainless Steel	DOZ	8.66
PL-SF/B	Salad Fork, Stainless Steel	PKG	6.25
PL-DS/B	Oval Soup Spoon, Stainless Steel	PKG	7.44
PL-LTS/B	Teaspoon, Stainless Steel	PKG	6.5



## Venetian

Item #	Description	UOM	Length
VEN-DF/B	Dinner Fork, Stainless Steel	PKG	7.72
VEN-DK/B	Dinner Knife, Stainless Steel	DOZ	8.5
VEN-SF/B	Salad Fork, Stainless Steel	PKG	6.25
VEN-DS/B	Oval Soup Spoon, Stainless Steel	PKG	7.76
VEN-LTS/B	Teaspoon, Stainless Steel	PKG	6.34



## Windsor

Item #	Description	UOM	Length
W42-DK/B	42 g, Wave Edge Dinner Knife, Stainless Steel	DOZ	7.95
W42-DK/P/B	Plain Edge Dinner Knife, Stainless Steel	DOZ	7.95
W50-DK/B	50 g, Wave Edge Heavy Dinner Knife, Stainless Steel	DOZ	7.91





### "Kings Pattern" Buffetware

Item #	Description	UOM
FCL-4	4 oz Ladle, Stainless Steel	EA
FCL-2	2 oz Ladle, Stainless Steel	EA
FCS-13	13" Solid Spoon, Stainless Steel	EA
FCS-11	11" Solid Spoon, Stainless Steel	EA



### Wedding Cake Set

Item #	Description	UOM
HS-2PC	Acrylic Crystal Cut Handle 11" Pastry Server & 13.5" Cake Knife, Stainless Steel	EA



### Avalon Serving Pieces

Item #	Description	UOM
AV-BQS/B	13" Banquet Spoon, Stainless Steel	DOZ
AV-LSS/B	Large Serving Spoon, Stainless Steel	DOZ



### Windsor Serving Pieces

Item #	Description	UOM
W57-BRY/B	8" Berry Spoon, Stainless Steel	DOZ
W57-GL/B	5/8 oz Gravy Ladle, Stainless Steel	DOZ
W57-TBS/9/B	9" Serving Table Spoon, Stainless Steel	DOZ
W57-TBS/B	7.5" Serving Table Spoon, Stainless Steel	DOZ



### Premium Quality Oversized Serving Spoons

Item #	Description	UOM
PL-PTS/10/B	10" Slotted Serving Spoon, Stainless Steel	DOZ
PL-TBS/10/B	10" Solid Serving Spoon, Stainless Steel	DOZ



### Serving Spoon

Item #	Description	UOM
TBS-8FE/B	Flat Edge Serving Spoon, Stainless Steel	DOZ



RW/SO-12

### Royal Windsor

Item #	Description	UOM
RW/MS-9	9" Serrated Slicing Knife, Stainless Steel	EA
RW/PS-11	11" Pie Server, Stainless Steel	EA
RW/PF-11	11" Pot Fork, Stainless Steel	EA
RW/SL-12	12" Slotted Spoon, Stainless Steel	EA
RW/SO-12	12" Solid Spoon, Stainless Steel	EA

# Hand Tools

- Advantage Series Utensils
- Advantage Series Knives
- Get-A-Grip Hand Tools
- Can Openers
- Garlic Press
- Dishers & Portioners
- Peelers & Corers
- Cheese Cutter
- Ladles, Scoops, & Spoons
- Tongs
- Scrapers & Turners
- Kitchen Forks
- Servers & Spreaders
- Cleavers
- Sheers
- Cutlery Magnetic Bars & Knife Rack
- Strainers & Colanders & Skimmers
- Mesh Baskets
- Mashers
- Graters
- Large Whips
- Tenderizers
- Mandolin Slicers
- French Fry Cutter
- Meat Grinders

# Advantage Series ADCRAFT®

Adcraft's NSF approved Advantage Series line of utensils are constructed of stain-free, high-carbon steel and molded white polypropylene handles. Dishwasher safe. Individually blister packed.



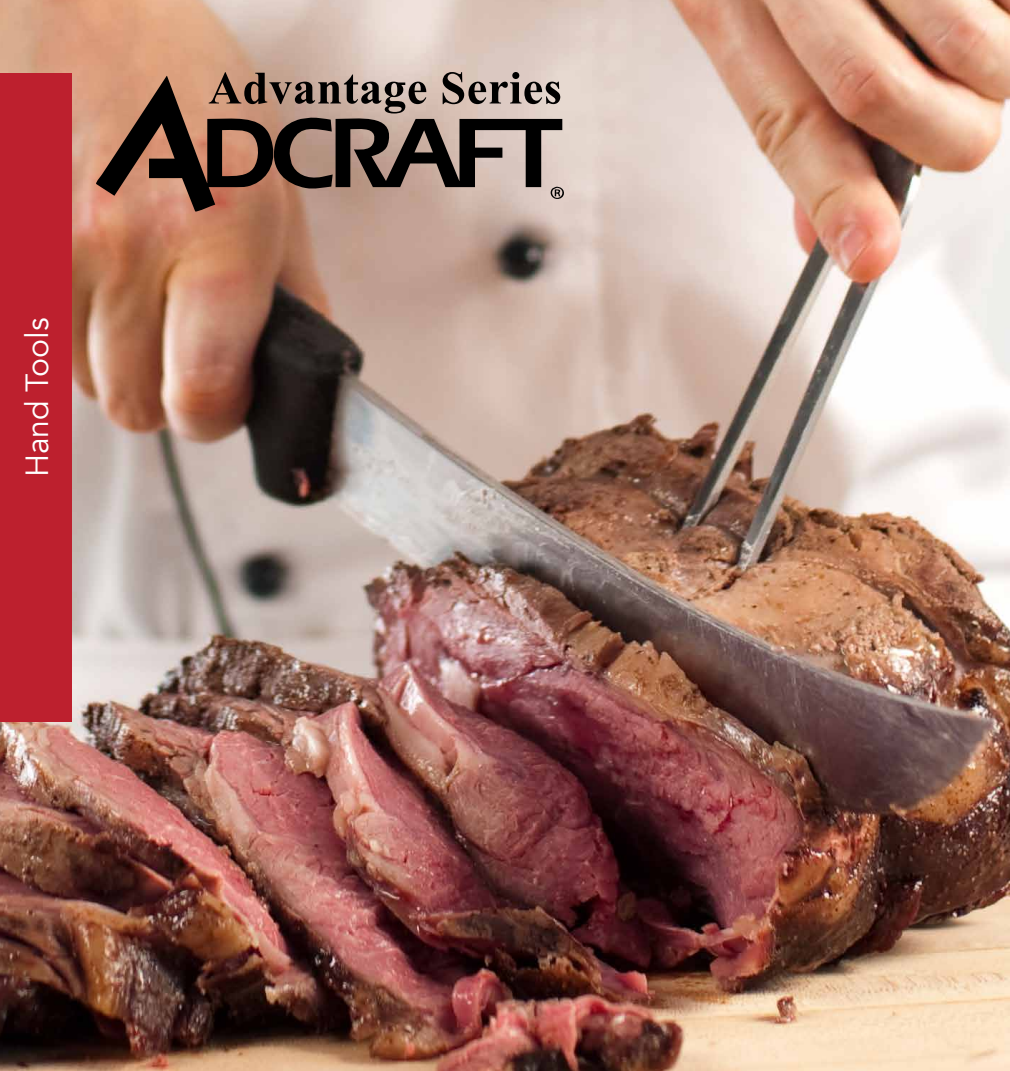
## Advantage Series Utensils

#	Item #	Description	UOM	Dimensions
1	CUT-DC4	6" x 3" Dough Cutter	EA	6" x 5" x 1"
2	CUT-SS	3" Sandwich Spreader, Set of 2	EA	7" x 1" x 1"
3	CUT-T2	2.5" Mini Turner	EA	8" x 1" x 2"
4	CUT-PC4	4" Pizza Cutter	EA	9" x 4" x 1"
5	CUT-S4	4" Scraper	EA	10" x 4" x 1"
6	CUT-PS5	3" x 5" Pie Server	EA	12" x 3" x 2"
7	CUT-10ISWH	10" Icing Spatula	EA	15" x 2" x 1"
8	CUT-T83PWH	8" x 3" Perforated Turner	EA	15" x 3" x 4"
9	CUT-T83WH	8" x 3" Cake Turner	EA	15" x 3" x 4"
10	CUT-T63WH	6" x 3" Square Turner	EA	13" x 3" x 2"
11	CUT-ST54	5" x 4" Steak Turner	EA	17" x 4" x 2"
12	CUT-HT43	4" x 3" Hamburger Turner	EA	11" x 3" x 2"

- Features durable white polypropylene handles for a clean, professional look that complements any kitchen environment
- Designed for high-volume use with ergonomic grips that enhance comfort and reduce hand fatigue during repetitive tasks
- Blades and working ends crafted from high-quality stainless steel for lasting sharpness, strength, and corrosion resistance
- Heat-resistant up to 230°F (110°C) for safe use on hot surfaces or during grill and oven-side tasks
- Lightweight construction allows for precision and control without compromising on durability
- Dishwasher safe for quick turnaround and efficiency in fast-paced kitchen environments



# Advantage Series ADCRAFT®



Choose from a variety of styles to meet your needs. Adcraft's NSF certified Advantage Series line of knives are constructed of stain-free, high-carbon steel and molded polypropylene handles. Dishwasher safe. Available in white or black handles. Individually blister packed.

## Advange Series Knives - Black Handle

NSF

#	Item #	Description	UOM	Dimensions
1	CUT-3.25/2BK	3.25" Paring Knife	SET	19" x 3" x 1"
2	CUT-4/2PCBL	4" Paring Knife, Set of 2	SET	20" x 2" x 2"
3	CUT-6NSBBL	6" Narrow Stiff Boning Knife	EA	30" x 4" x 3"
4	CUT-6.25WBBL	6.25" Wide Stiff Boning Knife	EA	30" x 3" x 2"
5	CUT-8COKBL	8" Wide Cook's Knife	EA	35" x 3" x 3"
6	CUT-10COKBL	10" Wide Cook's Knife	EA	39" x 3" x 2"
7	CUT-12COKBL	12" Wide Cook's Knife	EA	45" x 6" x 3"
8	CUT-8WASBL	8" Serrated Slicer	EA	15" x 4" x 3"
9	CUT-10WASBL	10" Serrated Slicer	EA	39" x 3" x 2"
10	CUT-12WASBL	12" Serrated Slicer	EA	45" x 4" x 3"
11	CUT-12SS	12" Sharpening Steel	EA	44" x 6" x 6"
12	CUT-14SS	14" Sharpening Steel	EA	49" x 6" x 4"



NSF



## Advange Series Knives - White Handle

NSF

#	Item #	Description	UOM	Dimensions
1	CUT-3.25/2WH	3.25" Paring Knife	PKG	19" x 3" x 1"
2	CUT-4/2WH	4" Paring Knife, Set of 2	PKG	20" x 2" x 2"
3	CUT-6NBWH	6" Narrow Stiff Boning Knife	EA	30" x 4" x 3"
4	CUT-8NFBWH	8" Narrow Stiff Boning Knife	EA	35" x 4" x 3"
5	CUT-6CBWH	6" Curved Stiff Boning Knife	EA	30" x 4" x 3"
6	CUT-6.25WBWH	6.25" Wide Stiff Boning Knife	EA	30" x 3" x 2"
7	CUT-8CKWH	8" Wide Cook's Knife	EA	35" x 3" x 3"
8	CUT-10CKWH	10" Wide Cook's Knife	EA	39" x 6" x 2"
9	CUT-12CKWH	12" Wide Cook's Knife	EA	45" x 4" x 3"
10	CUT-8WASWH	8" Serrated Slicer	EA	15" x 3" x 3"
11	CUT-10WASWH	10" Serrated Slicer	EA	39" x 3" x 2"
12	CUT-12WASWH	12" Serrated Slicer	EA	45" x 4" x 3"
13	CUT-12RSWH	12" Roast Beef Slicer	EA	44" x 4" x 3"
14	CUT-6WAWH	6" Serrated Utility/Slicer	EA	28" x 3" x 2"
15	CUT-8WAWH	8" Serrated Utility/Slicer	EA	34" x 3" x 2"
16	CUT-10CWH	10" Serrated Curved Bread Knife	EA	39" x 3" x 3"
17	CUT-10CIMWH	10" Cimenter	EA	39" x 4" x 2"
18	CUT-12CIMWH	12" Cimenter	EA	45" x 4" x 3"
19	CUT-9BAG/WH	9" Serrated Offset Bagel Knife	EA	37" x 5" x 3"



CUT-3.25/CDWH

## Advange Series Knives - White Pairing Knife Display

Item #	Description	UOM	Dimensions
CUT-3.25/CDWH	3.25" Paring Knife Countertop Display, 24 Pack, White	PKG	19" x 3" x 1"



## Get-A-Grip Hand Tools

Item #	Description	Dimensions	UOM
GRP-14T	14" Slotted Turner, Stainless Steel	14" x 3" x 2"	EA
GRP-3PC	3" Pizza Cutter, Stainless Steel	8" x 1" x 1"	EA
GRP-4PC	4" Pizza Cutter, Stainless Steel	9" x 4" x 1"	EA
GRP-65GP	6.5" Garlic Press, Stainless Steel	7" x 3" x 1"	EA
GRP-65YP	6.5" Y-Peeler, Stainless Steel	6" x 3" x 1"	EA
GRP-7ZP	7" Zester/Peeler, Stainless Steel	7" x 1" x 1"	EA
GRP-8OY	8" Oyster Knife, Stainless Steel	8" x 1" x 1"	EA
GRP-9AC	9" Fruit/Apple Corer, Stainless Steel	9" x 1" x 1"	EA
GRP-MCS	Measuring Cup Set: 1/4, 1/3, 1/2, & 1 Cup	7" x 4" x 2"	EA



## Can Openers

Item #	Description	UOM	Dimensions
107	Swing-A-Way <sup>®</sup> Jr Portable, White, Chrome Plated	EA	9" x 3" x 1"
407	Swing-A-Way <sup>®</sup> Portable, Black, Chrome Plated	EA	9" x 4" x 2"

## Garlic Press

Item #	Description	UOM	Dimensions
AGP-75	7.25", Poly Teeth, Cast Aluminum	EA	7" x 3" x 1"



ICS-40 ICS-30 ICS-24 ICS-20 ICS-16

ICS-12 ICS-10 ICS-8 ICS-6



### ICS Dishers

Item #	Description	UOM	Dimensions
ICS-40	7/8 oz, Size-40, Purple, Thumb Lever Action	EA	8" x 3" x 1"
ICS-30	1-1/4 oz, Size-30, Black, Thumb Lever Action	EA	8" x 3" x 1"
ICS-24	1-3/4 oz, Size-24, Red, Thumb Lever Action	EA	8" x 3" x 1"
ICS-20	2 oz, Size-20, Yellow, Thumb Lever Action	EA	8" x 3" x 1"
ICS-16	2-3/4 oz, Size-16, Blue, Thumb Lever Action	EA	8" x 3" x 1"
ICS-12	3-1/4 oz, Size-12, Green, Thumb Lever Action	EA	8" x 3" x 1"
ICS-10	3-3/4 oz, Size-10, Ivory, Thumb Lever Action	EA	9" x 3" x 2"
ICS-8	4 oz, Size-8, Gray, Thumb Lever Action	EA	9" x 3" x 2"
ICS-6	4-2/3 oz, Size-6, White, Thumb Lever Action	EA	9" x 3" x 2"



AMC-50

AMC-100

### AMC Disher / Portioners

Item #	Description	UOM	Dimensions
AMC-100	3/8 oz, Spring Action Squeeze Handle, Stainless Steel	EA	8" x 3" x 1"
AMC-30	1-1/4 oz, Spring Action Squeeze Handle, Stainless Steel	EA	8" x 3" x 1"
AMC-40	7/8 oz, Spring Action Squeeze Handle, Stainless Steel	EA	8" x 3" x 1"
AMC-50	5/8 oz, Spring Action Squeeze Handle, Stainless Steel	EA	8" x 3" x 1"
AMC-60	9/16 oz, Spring Action Squeeze Handle, Stainless Steel	EA	8" x 3" x 1"
AMC-70	1/2 oz, Spring Action Squeeze Handle, Stainless Steel	EA	8" x 3" x 1"



ZZD-12

ZZD-16

### Ice Cream Dippers

Item #	Description	UOM	Dimensions
ZZD-12	3 oz Dipper, Yellow Cap, Cast Aluminum	EA	7" x 2" x 2"
ZZD-16	2.5 oz Dipper, Green Cap, Cast Aluminum	EA	7" x 2" x 2"



PP-605

VP-6/B

### Peelers and Corers

Item #	Description	UOM
PP-605	7.75" Peeler/Corer, Poly Handle, Stainless Steel	DOZ
VP-6/B	Vegetable Peeler	DOZ



SPA-8

### Spade

Item #	Description	UOM	Dimensions
SPA-8	9" Ice Cream Spade, Black Handle, Stainless Steel Blade	EA	3" x 1" x 9"



CHE-4

### Cheese Cutter

Item #	Description	UOM	Dimensions
CHE-4	5" Wide, Adjustable Depth, Stainless Steel Wire	EA	5" x 5" x 0"



LAD-8PE LAD-6PE LAD-4PE LAD-3PE LAD-2PE

### One-Piece Ladoons Perforated

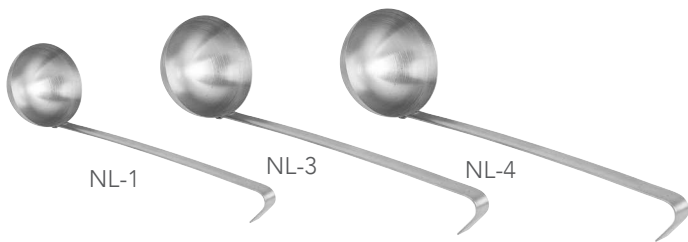
Item #	Description	UOM	Dimensions
LAD-8PE	8 oz Blue, Stainless Steel	EA	2" x 4" x 15"
LAD-6PE	6 oz Black, Stainless Steel	EA	1" x 4" x 14"
LAD-4PE	4 oz Green, Stainless Steel	EA	4" x 14" x 1"
LAD-3PE	3 oz Beige, Stainless Steel	EA	3" x 13" x 1"
LAD-2PE	2 oz Red, Stainless Steel	EA	13" x 3" x 1"



LAD-8SO LAD-6SO LAD-4SO LAD-3SO LAD-2SO

### One-Piece Ladoons Solid

Item #	Description	UOM	Dimensions
LAD-8SO	8 oz Blue, Stainless Steel	EA	2" x 4" x 15"
LAD-6SO	6 oz Black, Stainless Steel	EA	1" x 4" x 14"
LAD-4SO	4 oz Green, Stainless Steel	EA	3" x 3" x 12"
LAD-3SO	3 oz Beige, Stainless Steel	EA	3" x 14" x 1"
LAD-2SO	2 oz Red, Stainless Steel	EA	13" x 2" x 1"



### Short Handle 2 Piece Ladles

Item #	Description	UOM	Dimensions
NL-0	1/2 oz, 5" Handle, Stainless Steel	EA	8" x 2" x 1"
NL-1	1 oz, 5" Handle, Stainless Steel	EA	9" x 2" x 1"
NL-2	2 oz, 7" Handle, Stainless Steel	EA	9" x 3" x 1"
NL-3	3 oz, 7" Handle, Stainless Steel	EA	9" x 3" x 1"
NL-4	4 oz, 8" Handle, Stainless Steel	EA	10" x 3" x 1"



### Deluxe 1 Piece Ladles

Item #	Description	UOM	Dimensions
LIPC-12	12 oz, 13" Handle, Stainless Steel	EA	5" x 5" x 16"
LIPC-8	8 oz, 12.5" Handle, Stainless Steel	EA	4" x 4" x 15"
LIPC-6	6 oz, 12.5" Handle, Stainless Steel	EA	4" x 4" x 14"
LIPC-4	4 oz, 12.5" Handle, Stainless Steel	EA	3" x 3" x 14"
LIPC-3	3 oz, 11.5" Handle, Stainless Steel	EA	3" x 3" x 15"
LIPC-2	2 oz, 11" Handle, Stainless Steel	EA	2" x 2" x 11"
LIPC-1	1 oz, 11" Handle, Stainless Steel	EA	2" x 2" x 11"



### Standard 2 Piece Ladles

Item #	Description	UOM
LD-12	12 oz, 14" Handle, Brushed Stainless Steel	EA
LD-8	8 oz, 12" Handle, Brushed Stainless Steel	EA
LD-6	6 oz, 12" Handle, Brushed Stainless Steel	EA
LD-4	4 oz, 12" Handle, Brushed Stainless Steel	EA
LD-2	2 oz, 10.5" Handle, Brushed Stainless Steel	EA
LD-105	1-1/2 oz, 10.5" Handle, Brushed Stainless Steel	EA
LD-1	1 oz, 10.5" Handle, Brushed Stainless Steel	EA

### Ladle with 14" Handle

Item #	Description	UOM	Dimensions
LAD-24	24 oz Ladle, 14" Handle, Brushed Stainless Steel	EA	
LAD-32	32 oz Ladle, 14" Handle, Brushed Stainless Steel	EA	15" x 6" x "



### Stainless Steel Dipper

Item #	Description	UOM
D-32GSA	32 oz Dipper, 12-1/2" Handle, Stainless Steel	EA



### Solid Basting Spoons

Item #	Description	UOM	Dimensions
DSO-21	21" Solid, Stainless Steel	EA	3" x 21" x 2"
DSO-18	18" Solid, Stainless Steel	EA	3" x 18" x 2"
DSO-15	15" Solid, Stainless Steel	EA	3" x 15" x 2"
DSO-13	13" Solid, Stainless Steel	EA	3" x 13" x 2"
DSO-11	11" Solid, Stainless Steel	EA	3" x 11" x 2"



### Perforated Basting Spoons

Item #	Description	UOM	Dimensions
DPE-15	15" Perforated, Stainless Steel	EA	3" x 15" x 2"
DPE-13	13" Perforated, Stainless Steel	EA	3" x 13" x 2"
DPE-11	11" Perforated, Stainless Steel	EA	3" x 11" x 16"



### Slotted Basting Spoons

Item #	Description	UOM	Dimensions
DSL-15	15" Slotted, Stainless Steel	EA	3" x 15" x 2"
DSL-13	13" Slotted, Stainless Steel	EA	3" x 13" x 2"
DSL-11	11" Slotted, Stainless Steel	EA	3" x 11" x 1"



### Basting Spoons With Bakelite Handles - Perforated Bowl

Item #	Description	UOM	Dimensions
BHS-15PE	15" Perforated, Stainless Steel	EA	15" x " x "
BHS-13PE	13" Perforated, Stainless Steel	EA	3" x 13" x 2"



### Basting Spoons

Item #	Description	UOM	Dimensions
SPH-13PE	13" Perforated, Stainless Steel	EA	3" x 13" x 2"
SPH-13SL	13" Slotted, Stainless Steel	EA	3" x 13" x 2"
SPH-13SO	13" Solid, Stainless Steel	EA	3" x 13" x 2"



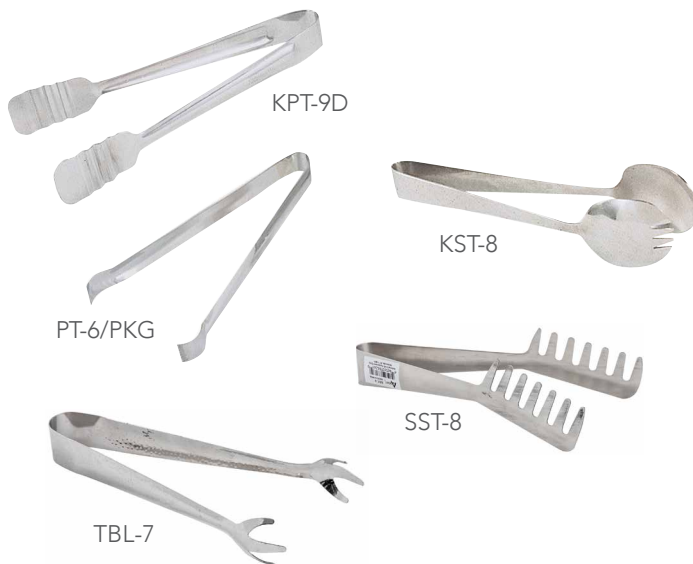
## Basting Spoons With Bakelite Handles - Solid Bowl

Item #	Description	UOM	Dimensions
BHS-15SO	15" Solid, Stainless Steel	EA	3" x 15" x 2"
BHS-13SO	13" Solid, Stainless Steel	EA	3" x 13" x 2"



## Basting Spoons With Bakelite Handles - Slotted Bowl

Item #	Description	UOM	Dimensions
BHS-15SL	15" Slotted, Stainless Steel	EA	3" x 15" x 2"
BHS-13SL	13" Slotted, Stainless Steel	EA	3" x 13" x 2"



## Tongs

Item #	Description	UOM	Dimensions
KPT-9D	8-1/4" Pastry/Meat Tong	EA	9" x 1" x 2"
KST-8	8" Salad Tong	EA	4" x 10" x 2"
PT-6/PKG	6" Utility Pom Tongs, Pack of 6, Stainless Steel	EA	1" x 3" x 7"
SST-8	8" Spaghetti Tong	EA	2" x 8" x 2"
TBL-7	8" Ice Tongs, Stainless Steel	DOZ	7" x 1" x 1"



## Extra Heavy Utility Tongs

Item #	Description	UOM	Dimensions
XHT-16	16", Stainless Steel	EA	15" x 1" x 1"
XHT-12	12", Stainless Steel	EA	12" x 2" x 1"
XHT-10	9.5", Stainless Steel	EA	9" x 2" x 2"



## Scalloped Edge Tongs

Item #	Description	UOM	Dimensions
SEP-12BK	12", Black, Stainless Steel	EA	11" x 1" x 6"
SEP-12BU	12", Blue, Stainless Steel	EA	11" x 1" x 6"
SEP-12GN	12", Green, Stainless Steel	EA	11" x 1" x 6"
SEP-12RD	12", Red, Stainless Steel	EA	11" x 1" x 6"
SEP-12YL	12", Yellow, Stainless Steel	EA	11" x 1" x 6"
SEP-10BK	10", Black, Stainless Steel	EA	9" x 1" x 5"
SEP-10BU	10", Blue, Stainless Steel	EA	9" x 1" x 5"
SEP-10GN	10", Green, Stainless Steel	EA	9" x 1" x 5"
SEP-10RD	10", Red, Stainless Steel	EA	14" x 3" x 0"
SEP-10YL	10", Yellow, Stainless Steel	EA	9" x 1" x 5"



### Heavy Weight Utility Tongs

Item #	Description	UOM	Dimensions
TUF-16	16" Flat Spring, Stainless Steel	EA	16" x " x "
TUF-12	12" Flat Spring, Stainless Steel	EA	12" x " x "
TUF-10	9.5" Flat Spring, Stainless Steel	EA	10" x " x "



### Utility Tongs

Item #	Description	UOM	Dimensions
LUT-16	16", Stainless Steel	EA	2" x 2" x 16"
LUT-12	12", Stainless Steel	EA	2" x 2" x 12"
LUT-10	9-1/2", Stainless Steel	EA	1" x 1" x 9"



### Scrapers & Turners

Item #	Description	UOM	Dimensions
DTT-13	13" Slotted Turner, Stainless Steel	EA	3" x 13" x 1"
DTT-20	19.5" Slotted Turner, Stainless Steel	EA	4" x 18" x 1"



### Stainless Steel Turners

Item #	Description	UOM	Dimensions
SL-80	6" x 3" Slotted Turner, Stainless Steel	EA	14" x 3" x 0"
ST-80	6" x 3" Solid Turner, Stainless Steel	EA	14" x 3" x "



### French Fry Scoop

Item #	Description	UOM	Dimensions
FFS-DH	Dual Handle French Fry Scoop & Bagger, Stainless Steel	EA	9" x 8" x 2"



### Aluminum Scoops

Item #	Description	UOM	Dimensions
ALS-12	84 oz Scoop, Aluminum	EA	17" x 7" x 4"
ALS-11	58 oz Scoop, Aluminum	EA	15" x 6" x 4"
ALS-9	38 oz Scoop, Aluminum	EA	12" x 5" x 3"
ALS-8	24 oz Scoop, Aluminum	EA	11" x 4" x 3"
ALS-6	12 oz Scoop, Aluminum	EA	9" x 3" x 2"
ALS-5	5 oz Scoop, Aluminum	EA	7" x 2" x 2"
SCO-250	7 oz Flat Bottom Scoop, Cast Aluminum	EA	10" x 3" x 2"



### Stainless Steel Scoops

Item #	Description	UOM	Dimensions
HO-30/PKG	4 oz Scoop, 3 Pack, Stainless Steel	PKG	6" x 13" x 2"



### Wood Handle Turners

Item #	Description	UOM
KT-65P	14" Perforated Turner, Wood Handle, Stainless Steel	EA
KT-65	14" Solid Turner, Wood Handle, Stainless Steel	EA
KT-64	11" Solid Turner, Wood Handle, Stainless Steel	EA
KT-25	10-1/4" Solid Turner, Wood Handle, Stainless Steel	EA



BK-8

### Wood Handle Spatula

Item #	Description	UOM
BK-8	8" Tapered, Stainless Steel	EA



GT-20

### Large Wood Handle Turner

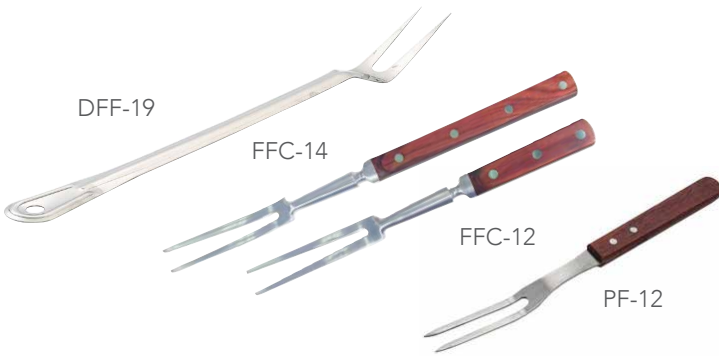
Item #	Description	UOM
GT-20	20" Solid Turner, Wood Handle, Stainless Steel	EA



S-117

### Pan Scraper

Item #	Description	UOM
S-117	8", Wood Handle, Stainless Steel	EA



DFF-19

FFC-14

FFC-12

PF-12

### Kitchen Forks

Item #	Description	UOM
DFF-13	13", 2-Tine, Stainless Steel	EA
DFF-19	18.5", 2-Tine, Stainless Steel	EA
FFC-12	12", 2-Tine, Riveted Hardwood, Forged Steel	EA
FFC-14	14", 2-Tine, Riveted Hardwood, Forged Steel	EA
PF-12	12", 2-Tine, Wood Handle, Stainless Steel	EA
PF-21	21", 2-Tine, Wood Handle, Stainless Steel	EA



KT-27

WSS-4

### Servers & Spreaders

Item #	Description	UOM
KT-27	10" Pie Server, Wood Handle, Stainless Steel	EA
WSS-4	7" Spreader, Wood Handle, Stainless Steel	EA
WSS-7/B	7-1/4" Windsor Spreader, Stainless Steel	DOZ



DS-6

### Wood Handle Dough Scraper

Item #	Description	UOM
DS-6	6", Wood Handle, Stainless Steel	EA



HCL-8

### Cleavers

Item #	Description	UOM
HCL-8	8" Heavy Duty Cleaver	EA



TPC-4

### Wood Handle Pizza Cutter

Item #	Description	UOM
TPC-4	4" Pizza Cutter, Wood Handle, Stainless Steel	EA



6606

PS-6607

### Shears

Item #	Description	UOM
6606	9" Come-Apart Kitchen Shear, Black Polypropylene, Stainless Steel	EA
PS-6607	8.5" Poultry Shear, Black Polypropylene, Stainless Steel	EA



PMB-24



PMB-18



PMB-13

### Cutlery Magnetic Bars

Item #	Description	UOM
PMB-24	24", Plastic	EA
PMB-18	18", Plastic	EA
PMB-13	13", Plastic	EA



MAG-18

MAG-12

### Magnetic Bars

Item #	Description	UOM
MAG-18	18", Hardwood	EA
MAG-12	12", Hardwood	EA



KR-12

### Knife Rack

Item #	Description	UOM
KR-12	9 Openings, Stainless Steel	EA



CAP-12C



CAP-8C



CAP-10F



CAP-8F

## Coarse China Cap Strainer

Item #	Description	UOM
CAP-12C	12", Stainless Steel	EA
CAP-10C	10", Stainless Steel	EA
CAP-8C	8", Stainless Steel	EA

## Fine China Cap Strainer

Item #	Description	UOM
CAP-12F	12", Stainless Steel	EA
CAP-10F	10", Stainless Steel	EA
CAP-8F	8", Stainless Steel	EA



BS-825



JST-31/PKG

## Strainers

Item #	Description	UOM
BS-825	8" Round Bouillon Strainer, 9" Wooden Handle, Stainless Steel	EA
JST-31/PKG	Julep Strainer, Set of 2, Stainless Steel	PKG



CB-12C

## Culinary Basket Coarse Mesh

Item #	Description	UOM
CB-12C	12" Round, 1/2" Coarse Mesh	EA
CB-10C	10" Round, 1/2" Coarse Mesh	EA
CB-8C	8" Round, 1/2" Coarse Mesh	EA



CB-12M

## Culinary Basket Medium Mesh

Item #	Description	UOM
CB-12M	12" Round, 1/4" Medium Mesh	EA
CB-10M	10" Round, 1/4" Medium Mesh	EA
CB-8M	8" Round, 1/4" Medium Mesh	EA



CB-12F

## Culinary Basket Fine Mesh

Item #	Description	UOM
CB-12F	12" Round, 1/8" Fine Mesh	EA
CB-10F	10" Round, 1/8" Fine Mesh	EA
CB-8F	8" Round, 1/8" Fine Mesh	EA



### Aluminum Colanders

Item #	Description	UOM
ALC-16	16 qt, Deep & Double Handled	EA
ALC-11	11 qt, Deep & Double Handled	EA
ALC-8	8 qt, Deep & Double Handled	EA



### Colander S/S

Item #	Description	UOM
COL-14	14 qt, Stainless Steel	EA
COL-8	8 qt, Stainless Steel	EA
COL-5	5 qt, Stainless Steel	EA



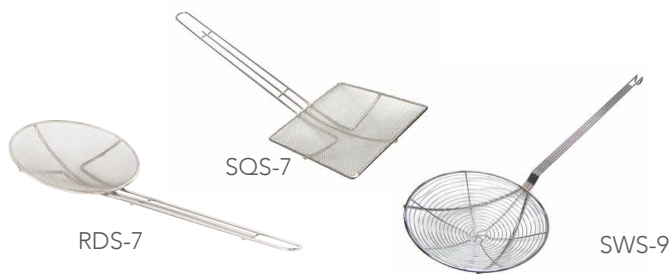
### Heavy Duty Colander

Item #	Description	UOM
HDC-3	3 qt, Stainless Steel	EA



### Heavy Duty Skimmer

Item #	Description	UOM
HDSK-6	6-1/4" Bowl, 18" Handle, Stainless Steel	EA
HDSK-5	4-3/4" Bowl, 15" Handle, Stainless Steel	EA
HDSK-4	4" Bowl, 13" Handle, Stainless Steel	EA



### Fine Mesh Skimmer

Item #	Description	UOM
RDS-7	7", Round, Heavy Tinned Steel Mesh	EA
SQS-7	6-3/4" Square, Heavy-Tinned Plated Steel	EA
SWS-9	9" Round, Spiral Wire, Nickel Plated	EA



### Wire Mesh Skimmer

Item #	Description	UOM
WSK-12	12" Round, Chrome-plated	EA
WSK-9	9" Round, Chrome-plated	EA
WSK-8	8" Round, Chrome-plated	EA
WSK-7	7" Round, Chrome-plated	EA
WSK-6	6" Round, Chrome-plated	EA



DSM-8

### Deluxe Stainless Steel Strainers

Item #	Description	UOM
DSM-10	10" Round, Wooden Handle	EA
DSM-8	8" Round, Wooden Handle	EA



DBTN-10

### Double Mesh Tinned Strainer

Item #	Description	UOM
DBTN-14	14" Round, Wooden Handle, Steel Mesh	EA
DBTN-12	12" Round, Wooden Handle, Steel Mesh	EA
DBTN-10	10.5" Round, Wooden Handle, Steel Mesh	EA
DBTN-8	8" Round, Wooden Handle, Steel Mesh	EA



DBTN-10RB

### Reinforced Base Strainer

Item #	Description	UOM
DBTN-10RB	10.5" Round Reinforced Base, Wooden Handle, Steel Mesh	EA



SGTN-10



SGTN-8

### Tinned Steel Strainer

Item #	Description	UOM
SGTN-10	10.5" Single Mesh, Wood Handle, Stainless Steel	EA
SGTN-8	8", Single Mesh, Wood Handle, Stainless Steel	EA



SSM-10



SSM-5

### Stainless Steel Strainers

Item #	Description	UOM
SSM-10	10.5" Round, Wooden Handle, Stainless Steel	EA
SSM-8	8" Round, Wooden Handle, Stainless Steel	EA
SSM-5	5" Round, Wooden Handle, Stainless Steel	EA



PMR-24



WPM-24

### Potato Mashers

Item #	Description	UOM
PMR-18	18", Round Head, Hardwood Handle	EA
PMR-24	24", Round Head, Hardwood Handle	EA
WPM-24	24", Square Head, Hardwood Handle	EA



PR-15

### Potato Ricer

Item #	Description	UOM
PR-15	15" Potato Ricer, Stainless Steel	EA



BXGR-4



GS-25

### Graters

Item #	Description	UOM
BXGR-4	9" Square, 4-Sided, Top Handle, Stainless Steel	EA
GS-25	9" Tapered, 4-Sided, Top Handle, Stainless Steel	EA



### Tenderizers & Accessories

Item #	Description	UOM
MTA-10	2-Sided Meat Tenderizer, Aluminum	EA
TEN-12	2-Sided Meat Tenderizer, Cast Aluminum	EA
THD-113	3-Sided Meat Tenderizer, Cast Aluminum	EA
TWH-2	2-Sided Meat Tenderizer, Wood Handle, Aluminum	EA



### Steak Weight

Item #	Description	UOM
WSI-84	Steak Weight, Wood Handle, Cast Iron	EA



### Hamburger Mold

Item #	Description	UOM
AHM-5	4-1/2" Hamburger Mold, Adjustable Depth, Cast Aluminum	EA



### Stainless Steel Sponges

Item #	Description	UOM
75-S	Sponges, 50 Gram, Stainless Steel	DOZ



### Cutters, Graters & Slicers

Item #	Description	UOM
AES-1	Egg Slicer, Aluminum	EA
GRP-10CG	8" Cheese Grater, Stainless Steel	EA
GRP-8SP	8" Straight Peeler, Stainless Steel	EA
MLB-2/PKG	1" & 1-3/16" Melon Baller, Hardwood Handle, Pack of 3	PKG
SER-7	7" Corrugated Blade Serrator, Wooden Handle, Stainless Steel	EA



### Scraper

Item #	Description	UOM
PSC-5	White Bevel-Edge Bowl Scraper, Plastic	EA



### Wire Brush

Item #	Description	UOM
WBR-14	14", Metal End Scraper, Hanging Hole, Tempered Steel Wire Bristles, Hardwood Handle	EA



KVW-48

## Kettle Whip

Item #	Description	UOM
KVW-48	48", Stainless Steel	EA



MW-42

## Mayonnaise Whip

Item #	Description	UOM
MW-42	42", Stainless Steel	EA



CAN-1

CAN-2

## Table Mounted Can Openers

Item #	Description	UOM
CAN-1	Extra Large, Nickel Plated Cast Iron, Stamped Steel Base	EA
CAN-2	Standard Size, Nickel Plated Cast Iron, Stamped Steel Base	EA



MAN-38

MM-138

## Mandolin Slicers

Item #	Description	UOM
MAN-38	Non-Skid, Safety Guard & Pusher, Stainless Steel	EA
MM-138	Bron Coucke, Safety Guard & Pusher, Stainless Steel	EA



FF38

FFC12

FFC14

## French Fry Cutter

Item #	Description	UOM
FF38	Cutter, Aluminum Pusher Block & 3/8" Stainless Steel Cutting Die	EA
FFC12	1/2" Cutting Die, Stainless Steel	EA
FFC14	1/4" Cutting Die, Stainless Steel	EA



10HC

22HC

## Hand Crank Meat Grinder

Item #	Description	UOM
10HC	Clamp Style, Table Mount, Includes Knife & 3/16" Plate, Cast Iron	EA
22HC	Blot/Screw Mounted, Includes Knife & 3/16" Plate, Cast Iron	EA

# Holloware

---

- Serving & Catering Trays
- Platters
- Casserole & Dessert Dishes
- Creamers
- Teapots
- Pitchers & Beverage Servers
- Gravy & Sauce Boats
- Tabletop Service
- Pails



### Chrome Cater Trays

Item #	Description	UOM
CCT-1220	19.5" x 12.5" Oblong with Embossed Design, Handles, Gadroon Edge	EA
CCT-18	18" x 13" Oval with Embossed Design, Gadroon Edge	EA
CCT-2114	21" x 14" Oblong with Embossed Design, Gadroon Edge	EA



### Cater Trays

Item #	Description	UOM
TRN-14H	14" Round, Swirl Design, 1" High Rim, Stainless Steel	EA
TRN-16H	16" Round, Swirl Design, 1" High Rim, Stainless Steel	EA
TRN-18H	18" Round, Swirl Design, 1" High Rim, Stainless Steel	EA



### Serving Trays

Item #	Description	UOM
IT-13	13-5/8" x 9-3/4" Display/Serving Tray, Stainless Steel	EA
IT-17	17" x 11-5/8" Display/Serving Tray, Stainless Steel	EA
SST-1418	14" x 18" Display/Serving Tray, Stainless Steel	EA



### Serving & Catering Trays

Item #	Description	UOM
SCT-11	11" Celery/Relish/Bread Tray, Gadroon Edge, Stainless Steel	EA
SCT-9	9" Celery/Relish/Bread Tray, Gadroon Edge, Stainless Steel	EA



### Casseroles

Item #	Description	UOM
SCD-1	28 oz, Deluxe Stacking Tureen with Cover, Stainless Steel	EA
SCD-2	46 oz, Deluxe Stacking Tureen with Cover, Stainless Steel	EA
SCD-3	74 oz, Deluxe Stacking Tureen with Cover, Stainless Steel	EA



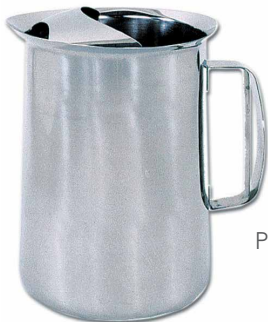
### Oval Platters

Item #	Description	UOM
OPD-14	14" x 9-1/4" Deluxe, Mirror Finish, Heavyweight, Stainless Steel	EA
OPD-16	16" x 10-1/4" Deluxe, Mirror Finish, Heavyweight, Stainless Steel	EA
OPD-18	18" x 11-1/2" Deluxe, Mirror Finish, Heavyweight, Stainless Steel	EA
OPD-22	22" x 15" Deluxe, Mirror Finish, Heavyweight, Stainless Steel	EA

PHK-2L



PHK-3L



### Scandia Pitchers

Item #	Description	UOM
PHK-2L	2-1/8 qt, Contour Lip, Hollow Handle, Stainless Steel	EA
PHK-3L	3-1/8 qt, Contour Lip, Hollow Handle, Stainless Steel	EA

DBP-2



DBP-3



### Deluxe Bell Pitcher

Item #	Description	UOM
DBP-2	2-1/8 qt, Contour Lip, Hollow Handle, Stainless Steel	EA
DBP-3	3-1/8 qt, Contour Lip, Hollow Handle, Stainless Steel	EA

PSS-64GB



### Pitchers

Item #	Description	UOM
PSS-64GB	64 oz, Water Pitcher, Ice-Guard, Gadroon Base, Hollow Handle, Stainless Steel	EA

NCD-64



### Coffee Decanter

Item #	Description	UOM
NCD-64	64 oz, Wide Mouth, Stainless Steel	EA

STP-10GB



STP-32GB



STP-64GB



### Beverage Server with Base

Item #	Description	UOM
STP-10GB	10 oz, Tob Knob, Hinged Lid & Gadroon Base, Stainless Steel	EA
STP-32GB	32 oz, Hinged Lid & Gadroon Base, Stainless Steel	EA
STP-64GB	64 oz, Hinged Lid & Gadroon Base, Stainless Steel	EA

PGN-21



PGN-12



### Deluxe Gooseneck Servers

Item #	Description	UOM
PGN-12	12 oz, Hinged Lid, Stainless Steel	EA
PGN-21	21 oz, Hinged Lid, Stainless Steel	EA
PGN-32	32 oz, Hinged Lid, Stainless Steel	EA
PGN-72	70 oz, Hinged Lid, Stainless Steel	EA



GNP-10

### Gooseneck Teapot

Item #	Description	UOM
GNP-10	10 oz, Heavyweight, Hinged Lid, Stainless Steel	EA



OC-24

### Oil Can

Item #	Description	UOM
OC-24	24 oz, Brass Lid, Stainless Steel	EA



CKT-9



ECS-9

### Covered Creamers

Item #	Description	UOM
CKT-9	9.5 oz, Hinged Knob Top Lid, Loop Handle, Stainless Steel	EA
ECS-9	9.5 oz, Hinger Stacking Lid, Loop Handle, Stainless Steel	EA



HBC-8/PKG



HBC-5/PKG



HBC-3/PKG

### Creamers

Item #	Description	UOM
HBC-3/PKG	3 oz, Bell Creamer, 4-pack, Stainless Steel	PKG
HBC-5/PKG	5 oz, Bell Creamer, 4-pack, Stainless Steel	PKG
HBC-8/PKG	8 oz, Bell Creamer, 4-pack, Stainless Steel	PKG



### Gravy & Sauce Boats

Item #	Description	UOM
BG-10	10 oz, Loop Handle, Tapered Spout, Oval Base, Stainless Steel	EA
BG-16	16 oz, Loop Handle, Tapered Spout, Oval Base, Stainless Steel	EA
BG-3	3 oz, Loop Handle, Tapered Spout, Oval Base, Stainless Steel	EA
BG-5	5 oz, Loop Handle, Tapered Spout, Oval Base, Stainless Steel	EA
BG-8	8 oz, Loop Handle, Tapered Spout, Oval Base, Stainless Steel	EA



MLS-4

MLS-BL

### Revolving Server

Item #	Description	UOM
MLS-3	3 Bowls with Spoons & Covers, Frame, Stainless Steel	EA
MLS-4	4 Bowls with Spoons & Covers, Frame, Stainless Steel	EA
MLS-BL	10 oz Bowl for MLS-3 & MLS-4, Stainless Steel	EA



### Sauce Cups

Item #	Description	UOM
OYC-1/PKG	1.5 oz, Tapered Nesting, Stainless Steel, 24 count	PKG
OYC-2/PKG	2.5 oz, Tapered Nesting, Stainless Steel, 24 count	PKG



### Dessert Dish

Item #	Description	UOM
SBS-4GB	4 oz, Scalloped Rim Sherbet Dish, Gadroon Base, Stainless Steel	EA
STS-5	6 oz, Tulip Sundae, Gadroon Base, Stainless Steel	EA



### Ice/Relish Bowl

Item #	Description	UOM
SIB-40	40 oz, Ice/Relish Bowl, Gadroon Rim, Stainless Steel	EA



### Classic Supreme Bowls

Item #	Description	UOM
ESB-16	16 oz, Classic Supreme Bowl, Footed Base, Stainless Steel	EA
SSR-6P	Supreme Ring for ESB-16, Slotted, Stainless Steel	EA
SSS-4	4 oz, Insert Cup for SSR-6P, Stainless Steel	EA



### Deluxe Utility Pails

Item #	Description	UOM
PS-2	2 qt, Stainless Steel	EA
PS-20	20 qt, Stainless Steel	EA
PS-9	9 qt, Stainless Steel	EA



### Utility Pails

Item #	Description	UOM
PS-13	13 qt, Stainless Steel	EA
PS-16	16 qt, Stainless Steel	EA
PS-6	6 qt, Stainless Steel	EA

# Mixing Bowls

- Bowls
- Stands





## Mixing Bowls

Item #	Description	Dimensions	UOM
SBL-30	30 qt, Narrow Rim, Mirror Finish, Stainless Steel	23" x 23" x 7"	EA
SBL-20	16 qt, Narrow Rim, Mirror Finish, Stainless Steel	19" x 19" x 6"	EA
SBL-16	13 qt, Narrow Rim, Mirror Finish, Stainless Steel	18" x 18" x 5"	EA
SBL-13D	8 qt, Narrow Rim, Mirror Finish, Stainless Steel	15" x 15" x 4"	EA
SBL-8D	5.5 qt, Narrow Rim, Mirror Finish, Stainless Steel	13" x 13" x 4"	EA
SBL-5D	3.5 qt, Narrow Rim, Mirror Finish, Stainless Steel	12" x 12" x 4"	EA
SBL-4D	2-3/4 qt, Narrow Rim, Mirror Finish, Stainless Steel	11" x 11" x 3"	EA
SBL-3D	2 qt, Narrow Rim, Mirror Finish, Stainless Steel	10" x 10" x 3"	EA
SBL-2D	1 qt, Narrow Rim, Mirror Finish, Stainless Steel	8" x 8" x 2"	EA
SBL-1D	1/2 qt, Narrow Rim, Mirror Finish, Stainless Steel	6" x 6" x 2"	EA



STA-30

## Mixing Bowl Stand

Item #	Description	UOM	Dimensions
STA-30	33" Tall for SBL-30, 30 qt Bowl, Chrome	EA	18" x 25" x 33"





### True Capacity Mixing Bowls

Item #	Description	Dimensions	UOM
SMBT-30Q	30 Qt True Capacity Mixing Bowl, Stainless Steel	22" x 22" x 7"	EA
SMBT-20Q	20 Qt True Capacity Mixing Bowl, Stainless Steel	19" x 19" x 6"	EA
SMBT-16Q	16 Qt True Capacity Mixing Bowl, Stainless Steel	18" x 18" x 6"	EA
SMBT-13Q	13 Qt True Capacity Mixing Bowl, Stainless Steel	17" x 17" x 5"	EA
SMBT-8Q	8 Qt True Capacity Mixing Bowl, Stainless Steel	14" x 14" x 5"	EA
SMBT-5Q	5 Qt True Capacity Mixing Bowl, Stainless Steel	12" x 12" x 4"	EA
SMBT-4Q	4 Qt True Capacity Mixing Bowl, Stainless Steel	11" x 11" x 4"	EA
SMBT-3Q	3 Qt True Capacity Mixing Bowl, Stainless Steel	10" x 10" x 3"	EA
SMBT-1-5Q	1-1/2 Qt True Capacity Mixing Bowl, Stainless Steel	8" x 8" x 1"	EA
SMBT-3-4Q	3/4 Qt True Capacity Mixing Bowl, Stainless Steel	6" x 6" x 2"	EA



### Deluxe Mixing Bowls

Item #	Description	UOM	Dimensions
DMB-13	13 qt, Narrow Rim, Mirror Finish, Extra-Heavy, Stainless Steel	EA	14" x 14" x 6"
DMB-8	8 qt, Narrow Rim, Mirror Finish, Extra-Heavy, Stainless Steel	EA	12" x 12" x 5"
DMB-5	4-3/4 qt, Narrow Rim, Mirror Finish, Extra-Heavy, Stainless Steel	EA	10" x 10" x 4"

# Steam Table Pans

- 24 Gauge Steam Table Pans
- 22 Gauge Steam Table Pans
- Hinged Covers
- Solid Covers
- Dome Covers
- Slotted Covers
- Deli Pans
- Perforated Steam Table Pans
- Bain Marie Pots & Lids
- Vegetable Insets
- Adapter Bars & Plates
- False Bottoms

- Full size heavy 22 gauge or standard 24 gauge pans.
- The anti-jamming design covers the full perimeter of the pan.
- The design also prevents damaged edges.
- Full and fractional sizes to fit standard 19-7/8" x 11-7/8" openings.



## 24 Gauge Steam Table Pans, Stainless Steel



Item #	Description	Dimensions	UOM
200F2	Full Size, 2-1/2" Deep	21" x 13" x 3"	EA
200F4	Full Size, 4" Deep	21" x 13" x 4"	EA
200F6	Full Size, 6" Deep	21" x 13" x 6"	EA
200H2	Half Size, 2-1/2" Deep	13" x 10" x 3"	EA
200H4	Half Size, 4" Deep	13" x 10" x 4"	EA
200H6	Half Size, 6" Deep	13" x 10" x 6"	EA
200HL2	Half Long Size, 2-1/2" Deep	21" x 6" x 3"	EA
200HL4	Half Long Size, 4" Deep	21" x 6" x 4"	EA
200HL6	Half Long Size, 6" Deep	21" x 6" x 6"	EA
200N2	Ninth Size, 2-1/2" Deep	7" x 4" x 3"	EA
200N4	Ninth Size, 4" Deep	7" x 4" x 4"	EA
200Q2	Quarter Size, 2-1/2" Deep	10" x 6" x 3"	EA
200Q4	Quarter Size, 4" Deep	10" x 6" x 4"	EA
200Q6	Quarter Size, 6" Deep	10" x 6" x 6"	EA
200S2	Sixth Size, 2-1/2" Deep	7" x 6" x 3"	EA
200S4	Sixth Size, 4" Deep	7" x 6" x 4"	EA
200S6	Sixth Size, 6" Deep	7" x 6" x 6"	EA
200T2	Third Size, 2-1/2" Deep	13" x 7" x 3"	EA
200T4	Third Size, 4" Deep	13" x 7" x 4"	EA
200T6	Third Size, 6" Deep	13" x 7" x 6"	EA
200TT2	Two-Thirds Size, 2-1/2" Deep	14" x 13" x 3"	EA
200TT4	Two-Thirds Size, 4" Deep	14" x 13" x 4"	EA
200TT6	Two-Thirds Size, 6" Deep	14" x 13" x 6"	EA



## 22 Gauge Steam Table Pans, Stainless Steel

Item #	Description	Dimensions	UOM
22F2	Full Size, 2-1/2" Deep	21" x 13" x 3"	EA
22F4	Full Size, 4" Deep	21" x 13" x 4"	EA
22F6	Full Size, 6" Deep	21" x 13" x 6"	EA
22H2	Half Size, 2-1/2" Deep	13" x 10" x 3"	EA
22H4	Half Size, 4" Deep	13" x 10" x 4"	EA
22H6	Half Size, 6" Deep	13" x 10" x 6"	EA
22N2	Ninth Size, 2-1/2" Deep	7" x 4" x 3"	EA
22N4	Ninth Size, 4" Deep	7" x 4" x 4"	EA
22Q2	Quarter Size, 2-1/2" Deep	10" x 6" x 3"	EA
22Q4	Quarter Size, 4" Deep	10" x 6" x 4"	EA
22Q6	Quarter Size, 6" Deep	10" x 6" x 6"	EA
22S2	Sixth Size, 2-1/2" Deep	7" x 6" x 3"	EA
22S4	Sixth Size, 4" Deep	7" x 6" x 4"	EA
22S6	Sixth Size, 6" Deep	7" x 6" x 6"	EA
22T2	Third Size, 2-1/2" Deep	13" x 7" x 3"	EA
22T4	Third Size, 4" Deep	13" x 7" x 4"	EA
22T6	Third Size, 6" Deep	13" x 7" x 6"	EA



## 24 Gauge Perforated Steam Table Pans, Stainless Steel

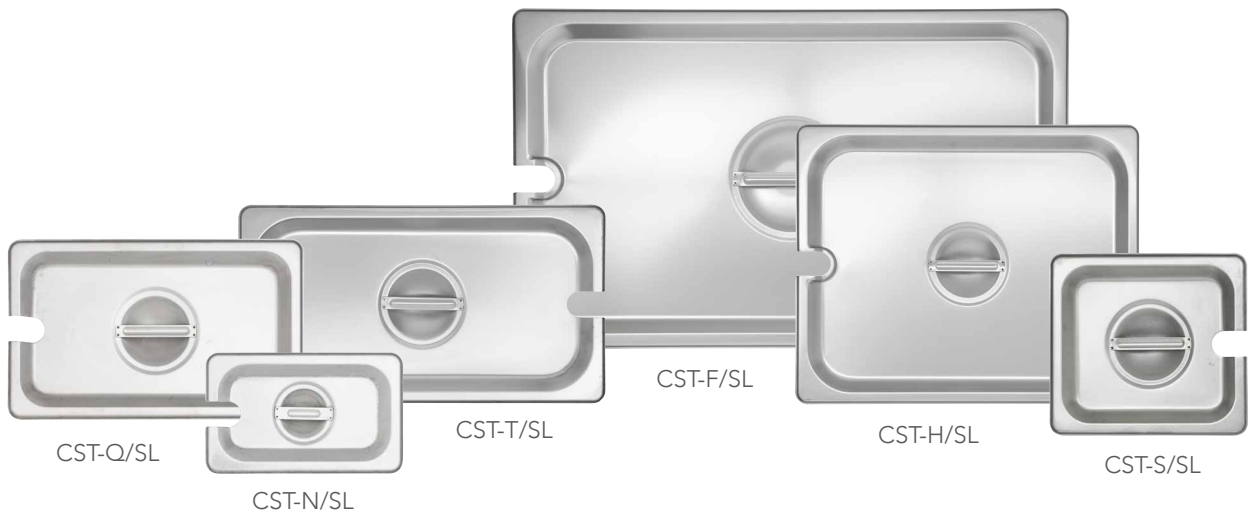


Item #	Description	Dimensions	UOM
PP-200F1	Full Size, 1" Deep	21" x 13" x 1"	EA
PP-200F2	Full Size, 2-1/2" Deep	21" x 13" x 3"	EA
PP-200F4	Full Size, 4" Deep	21" x 13" x 4"	EA
PP-200F6	Full Size, 6" Deep	21" x 13" x 6"	EA
PP-200H2	Half Size, 2-1/2" Deep	13" x 10" x 3"	EA
PP-200H4	Half Size, 4" Deep	13" x 10" x 4"	EA
PP-200H6	Half Size, 6" Deep	13" x 10" x 6"	EA



### Steam Table Pan Covers

Item #	Description	Dimensions	UOM
CST-TT	Two-Thirds Size Solid Cover, Stainless Steel	13" x 14" x 1"	EA
CST-H	Half Size Solid Cover, Stainless Steel	10" x 13" x 1"	EA
CST-Q	Quarter Size Solid Cover, Stainless Steel	6" x 10" x 1"	EA
CST-N	Ninth Size Solid Cover, Stainless Steel	4" x 7" x 1"	EA
CST-T	Third Size Solid Cover, Stainless Steel	7" x 13" x 1"	EA
CST-F	Full Size Solid Cover, Stainless Steel	13" x 21" x 1"	EA
CST-S	Sixth Size Solid Cover, Stainless Steel	6" x 7" x 1"	EA
CST-HL	Half Long Size Solid Cover, Stainless Steel	6" x 21" x 1"	EA



### Slotted Steam Table Pan Covers

Item #	Description	Dimensions	UOM
CST-F/SL	Full Size Slotted Cover, Stainless Steel	13" x 21" x 1"	EA
CST-H/SL	Half Slotted Cover, Stainless Steel	10" x 13" x 1"	EA
CST-N/SL	Ninth Slotted Cover, Stainless Steel	4" x 7" x 1"	EA
CST-Q/SL	Quarter Slotted Cover, Stainless Steel	6" x 10" x 1"	EA
CST-S/SL	Sixth Slotted Cover, Stainless Steel	6" x 7" x 1"	EA
CST-T/SL	Third Slotted Cover, Stainless Steel	7" x 13" x 1"	EA



## Deli Pans

Item #	Description	Dimensions	UOM
165F2	Full Size, 2-1/2" Deep, Stainless Steel	4" x 10" x 17"	EA
165F4	Full Size, 4" Deep, Stainless Steel	5" x 10" x 17"	EA
165F6	Full Size, 6" Deep, Stainless Steel	6" x 10" x 17"	EA
165H2	Half Size, 2-1/2" Deep, Stainless Steel	3" x 9" x 10"	EA
165H4	Half Size, 4" Deep, Stainless Steel	10" x 4" x 8"	EA
FC-165	Full Size, Solid Cover, Stainless Steel	1" x 10" x 17"	EA



## Pan Hinged Covers

Item #	Description	UOM	Dimensions
DCH-200F	Full Size, Dome, Stainless Steel	EA	4" x 13" x 21"
HC-200F	Full Size, Flat, Stainless Steel	EA	0" x 13" x 21"

## Dome Covers

Item #	Description	UOM	Dimensions
DC-200F	Full Size, Stainless Steel	EA	13" x 21" x 4"
DC-200H	Half Size, Stainless Steel	EA	10" x 13" x 3"



## Bain Marie Pots

Item #	Description	Dimensions	UOM
BMP-12	12 qt, Stainless Steel	10" x 10" x 11"	EA
BMP-8	8 qt, Stainless Steel	9" x 9" x 9"	EA
BMP-6	6 qt, Stainless Steel	8" x 8" x 9"	EA
BMP-4	4-1/4 qt, Stainless Steel	7" x 7" x 8"	EA
BMP-3	3-1/2 qt, Stainless Steel	7" x 7" x 7"	EA
BMP-2	2 qt, Stainless Steel	6" x 6" x 7"	EA
BMP-1	1-1/4 qt, Stainless Steel	5" x 5" x 6"	EA



## Bain Marie Pot Covers

Item #	Description	Dimensions	UOM
BMP-12C	10" Solid Cover, fits BMP-12, Stainless Steel	10" x 10" x 1"	EA
BMP-8C	9" Solid Cover, fits BMP-8, Stainless Steel	9" x 9" x 1"	EA
BMP-6C	8.25" Solid Cover, fits BMP-6, Stainless Steel	8" x 8" x 1"	EA
BMP-4C	7" Solid Cover, fits BMP-4, Stainless Steel	8" x 8" x 1"	EA
BMP-3C	7.12" Solid Cover, fits BMP-3, Stainless Steel	7" x 7" x 1"	EA
BMP-2C	5.65" Solid Cover, fits BMP-2, Stainless Steel	6" x 6" x 1"	EA
BMP-1C	5" Solid Cover, fits BMP-1, Stainless Steel	5" x 5" x 1"	EA



SVI-105

SVI-85

SVI-65

SVI-5

## Vegetable Insets

Item #	Description	UOM	Dimensions
SVI-105	11 qt, Stainless Steel	EA	12" x 12" x 9"
SVI-85	7 qt, Stainless Steel	EA	10" x 10" x 8"
SVI-65	4 qt, Stainless Steel	EA	8" x 8" x 8"
SVI-5	2-1/2, Stainless Steel	EA	6" x 6" x 8"



CI-105

CI-85

CI-65

CI-5

## Round Slotted Covers

Item #	Description	UOM	Dimensions
CI-105	Inset Cover fits SVI-105, Stainless Steel	EA	12" x 12" x 1"
CI-5	Inset Cover fits SVI-5, Stainless Steel	EA	6" x 6" x 1"
CI-65	Inset Cover fits SVI-65, Stainless Steel	EA	8" x 8" x 1"
CI-85	Inset Cover fits SVI-85, Stainless Steel	EA	10" x 10" x 1"



CHI-105



CHI-85

## Hinged Inset Cover

Item #	Description	UOM	Dimensions
CHI-105	Fits SVI-105, Stainless Steel	EA	12" x 12" x 2"
CHI-85	Fits SVI-85, Stainless Steel	EA	10" x 10" x 2"



AB-12

AB-20

SAP-566

SAP-88

## Adapter Bars and Plates

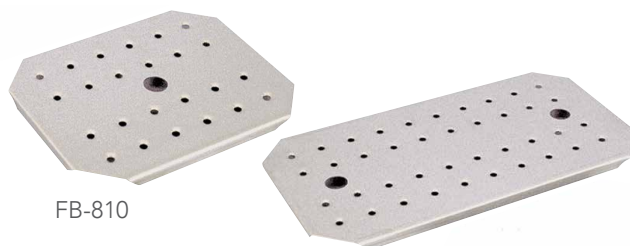
Item #	Description	UOM	Dimensions
AB-12	12" Adaptor Bar, Stainless Steel	EA	1" x 13" x 1"
AB-20	20" Adaptor Bar, Stainless Steel	EA	4" x 22" x 2"
SAP-566	Adaptor Plate, Two 6-3/8" Holes, One 4-7/8" Hole, Stainless Steel	EA	20" x 13" x 0"
SAP-88	Adaptor Plate, Two 8-1/2" Holes, Stainless Steel	EA	20" x 13" x 0"



SPIL-21

## 21-qt. Spillage Pan

Item #	Description	UOM	Dimensions
SPIL-21	Oblong Spillage Pan, Stainless Steel	EA	21" x 13" x 7"



FB-810

FB-917

## False Bottoms

Item #	Description	UOM	Dimensions
FB-810	Half Size, Stainless Steel	EA	11" x 8" x 1"
FB-917	Full Size, Stainless Steel	EA	9" x 1" x 17"

# Pizza Supplies

- Trays
- Screens
- Stands
- Peels
- Rolling Pins
- Dough Roller Dockers
- Dough Retarding/Proofing Pans
- Dough Boxes

From dough prep to serving, our pizza equipment lineup delivers the essential tools professionals need to craft and present perfect pies—every step of the way.



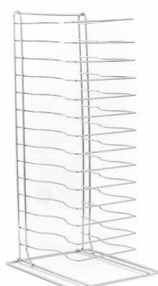
PZ-TP20 PZ-TP19 PZ-TP18 PZ-TP16 PZ-TP15 PZ-TP14 PZ-TP12 PZ-TP10 PZ-TP8

## Pizza Trays

Item #	Description	Dimensions	UOM
PZ-TP20	20" Wide Rim, Aluminum	20" x 20" x 0"	EA
PZ-TP19	19" Wide Rim, Aluminum	19" x 19" x 0"	EA
PZ-TP18	18" Wide Rim, Aluminum	18" x 18" x 0"	EA
PZ-TP16	16" Wide Rim, Aluminum	16" x 16" x 0"	EA
PZ-TP15	15" Wide Rim, Aluminum	15" x 15" x 0"	EA
PZ-TP14	14" Wide Rim, Aluminum	14" x 14" x 0"	EA
PZ-TP12	12" Wide Rim, Aluminum	12" x 12" x 0"	EA
PZ-TP10	10" Wide Rim, Aluminum	10" x 10" x 0"	EA
PZ-TP8	8" Wide Rim, Aluminum	8" x 8" x 0"	EA



PZ-18720



PZ-19029



PZST-4

PZST-7



PZST-9

## Pizza Screens

Item #	Description	UOM	Dimensions
PZ-18720	20" Pizza Screen, Aluminum	EA	20" x 20" x 0"
PZ-19029	15 Slot Pizza Screen Rack, Chrome	EA	12" x 12" x 27"

## Pizza Stands

Item #	Description	UOM
PZST-4	4" Round, Chrome-Plated Steel Rod	EA
PZST-7	7" Round, Chrome-Plated Steel Rod	EA
PZST-9	9" Squared, Chrome-Plated Steel Rod	EA



Adcraft's wood pizza peels are tapered from the handle down to the blade tip. Lightweight yet strong, the "Paesano Collection" of peels are made for rigorous use.

### Pizza Peels

Item #	Description	Dimensions	UOM
PZ-3512	35.5" Triple Riveted, Wooden Handle, Aluminum	12" x 14" x 36"	EA
PZ-2814	28" Triple Riveted, Wooden Handle, Aluminum	14" x 16" x 28"	EA
PZ-2512	26" Triple Riveted, Wooden Handle, Aluminum	12" x 14" x 26"	EA
PZT-3612	12" x 14" The Tony D, Tapered, Wood	0" x 12" x 36"	EA
PZT-3614	14" x 14" Mr. Frank, Tapered, Wood	0" x 14" x 36"	EA
PZT-4212	12" x 16" The Vito G, Tapered, Wood	12" x 42" x 16"	EA
PZT-4214	14" x 16" The Guiseppe, Tapered, Wood	14" x 42" x 16"	EA
PZT-4218	18" x 18" The Vinny M, Tapered, Wood	0" x 18" x 42"	EA
PZT-4220	20" x 42" Big Angelo, Tapered, Wood	20" x 42" x 20"	EA



### Heavy Wood Rolling Pins

Item #	Description	UOM
HRP-15	15" x 3.25" Barrel	EA
HRP-18	18" x 3.25" Barrel	EA



### Standard Wood Rolling Pins

Item #	Description	UOM
ROP-13	13" x 2.75" Barrel	EA
ROP-15	15" x 2.75" Barrel	EA
ROP-18	18" x 2.75" Barrel	EA



### Aluminum Rolling Pins

Item #	Description	UOM
PRA-3515	15" x 3.5" Barrel	EA
PRA-3518	18" x 3.5" Barrel	EA



### French Style Rolling Pin

Item #	Description	UOM
RPF-20	20" x 2" Barrel, Wood	EA



### Dough Roller Docker

Item #	Description	UOM
PZ-DD5704	5" x 1.75" Plastic Barrel, 3/8" Embedded Stainless Pins, Stainless Steel	EA



### Dough Box

Item #	Description	UOM
BOX-1826	18" x 26" x 3 Stackable, ABS Plastic	EA



### Dough Retarding/Proofing Pans

Item #	Description	UOM
PZ-7007E	8" Round Cover for PZ-DRPE800, Aluminum	EA
PZ-DRPE878	96 oz, 8-7/8" Round, Self-stacking, Aluminum	EA
PZ-DRPE800	48 oz, 8" Round, Self-stacking, Aluminum	EA

# Soft Goods

- Oven Mitts
- Pot Holders
- Pan Grabbers
- Terry Hand Towels
- Aprons
- Disposable Gloves





## Flame-Guard Oven Mitts

Item #	Description	UOM
11M-FG13	13", Wrist, Protects up to 400°F	EA
11M-FG15	15", Forearm, Protects up to 400°F	EA
11M-FG17	17", Forearm, Protects up to 400°F	EA
11M-FG24	24", Elbow, Protects up to 400°F	EA



## Terry Oven Mitts

Item #	Description	UOM
MTT-13	13" Tan, High Heat up to 600°F	EA
MTT-17	17" Tan, High Heat up to 600°F	EA



## Silicone Oven Mitts

Item #	Description	UOM
OMS-14/BU	14", Blue, Protects up to 400°F	EA
OMS-14/GR	14", Green, Protects up to 400°F	EA
OMS-14/OR	14", Orange, Protects up to 400°F	EA
OMS-14/RD	14", Red, Protects up to 400°F	EA



## Silicone Oven Mitt

Item #	Description	UOM
11M-SIL17	17", Silver, Non-Stick, Grease-Resistant, Reversible	EA



11PH-FG8

## Pot Holder

Item #	Description	UOM
11PH-FG8	8" Square, 12 Pack, Flameguard™, Terry Cotton	DOZ



11PG-SB

## Pad Pan Grabber

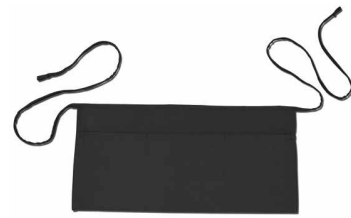
Item #	Description	UOM
11PG-SB	10.8" x 9.4", 12 Pack, Flame Retardant Canvas, Terry Cotton	DOZ

11CB-T2017



### Cloths & Towels

Item #	Description	UOM
11CB-T2017	White Ribbed Terry Towel, Cotton	DOZ



WA-1123BK

### Waist Apron

Item #	Description	UOM
WA-1123BK	Black, 3 Pockets, 65/35 Cotton Twill	EA

BA-3423BK



BA-3423BU



### Bib Aprons

Item #	Description	UOM
BA-3423BK	Black, Front Patch Pocket, 65/35 Cotton Twill	EA
BA-3423BU	Blue, Front Patch Pocket, 65/35 Cotton Twill	EA
BA-3423WH	White, Front Patch Pocket, 65/35 Cotton Twill	EA

TUX-3228BK



### Tuxedo Apron

Item #	Description	UOM
TUX-3228BK	Black, V-Neck, Center Divided Patch Pocket, 65/35 Cotton Twill	EA

11AB-3636WH



### Economy Bib Apron

Item #	Description	UOM
11AB-3636WH	White, Full Cut, 50/50 Duck Material	DOZ

VAP-4025



### Vinyl Apron Clear

Item #	Description	UOM
VAP-4025	Clear Dishwashing Apron, Heavy Gauge Vinyl	EA

HVA-2638



### Naugahyde Bib Apron

Item #	Description	UOM
HVA-2638	Brown, Front Lower Patch Pocket, Nylon Ties	EA

DG-10LC



### Disposable Vinyl Gloves

Item #	Description	UOM
DG-10LC	1000 per Box, 10 Boxes per Case, Clear Vinyl	CS

# Tabletop

- Cast Iron Skillets
- Fajita Pans
- Sizzling Platters
- Wood Underliners
- Wood Salad Bowls
- Bread Baskets
- Steak Knives
- Skewers
- Plastic Tumblers
- Clear Dessert Dish
- Sugar Holders
- Tabletop Service
- Napkin Dispensers
- Table Signage, Stands & Number Cards
- Shakers / Pourers
- Salt and Pepper Shakers
- Pepper Mills
- Squeeze Bottles





### Cast Iron Skillets

Item #	Description	UOM
CIF-10	10" Round, Cast Iron	EA
CIF-12	12" Round, Cast Iron	EA
CIF-8	8" Round, Cast Iron	EA



### Fajita Pans

Item #	Description	UOM
FAJ-795	9" x 7" Oval (Pan Only), Cast Iron	EA
FAJ-795W	Underliner for FAJ-795W, Wood	EA



### Aluminum Sizzling Platters

Item #	Description	UOM
SZ-10	10.5" Oval, Aluminum	EA
SZ-11	11.5" Oval, Aluminum	EA
SZ-12	12.5" Oval, Aluminum	EA



### Wood Underliners

Item #	Description	UOM
WU-10	Underliner for SZ-10, Wood	EA
WU-11	Underliner for SZ-11, Wood	EA
WU-12	Underliner for SZ-12, Wood	EA



### Sizzling Platters

Item #	Description	UOM
SIZ-118P	11-3/8" x 7-1/2" Oval, 18/8 Stainless Steel	EA
SIZ-711P	11" x 7" Oblong, 18/8 Stainless Steel	EA
SIZ-813H	Oblong Underliner for SIZ-711P & SIZ-118P, Black, Plastic	EA



### Au Gratin

Item #	Description	UOM
OAG-12	12 oz, Oval, Stainless Steel	EA
OAG-8	8 oz, Oval, Stainless Steel	EA
RAG-6	6 oz, Round, Stainless Steel	EA



## Wood Salad Bowls

Item #	Description	UOM
TSB-10	10" Round, 4-Ply, Woven, Keyaki Wood	DOZ
TSB-6	6" Round, 4-Ply, Woven, Keyaki Wood	DOZ
TSB-8	8" Round, 4-Ply, Woven, Keyaki Wood	DOZ



WWP-10K

## Woven Wood Plates

Item #	Description	UOM
WWP-10K	10" Round, 4-Ply, Woven, Keyaki Wood	DOZ



OBB-1611



OBB-128

## Bread Baskets

Item #	Description	UOM
OBB-128	12" x 8" x 3" Oblong with Handles, Wicker	EA
OBB-1611	16" x 11" x 3" Oblong with Handles, Wicker	EA
SWB-962	9.5" x 6.25" x 3" Oval, Tan, Wire Reinforced, Polypropylene	DOZ
SWB-9R	9" x 2.5" Round, Tan, Wire Reinforced, Polypropylene	DOZ



SK-1149/B

MS-3000

STK-249/B

MS-2000/B

NSK-8LH



## Steak Knives

Item #	Description	UOM
SK-1149/B	8-3/8" Serrated Round-Tip, 24 Pack, Wood Handle, Stainless Steel	PKG
SK-16HG	8-3/8" Serrated Point-Tip, 50 Pack, Wood Handle, Stainless Steel	DOZ
STK-249/B	8-3/4" Black Pistol-Grip Serrated Point-Tip, 24 Pack, Stainless Steel	PKG
MS-2000/B	8-3/4" Black Steer Serrated Round-Tip, 24 Pack, Stainless Steel	PKG
MS-3000	8-3/4" Black Steer Serrated Point-Tip, 24 Pack, Stainless Steel	DOZ
NSK-8LH	8-1/4" Serrated Point-Tip, Wood Handle, Stainless Steel	DOZ



## Stainless Steel Skewers

Item #	Description	UOM
SKEW-10	10", Loop Handle, Stainless Steel	DOZ
SKEW-12	12", Loop Handle, Stainless Steel	DOZ
SKEW-16	16", Loop Handle, Stainless Steel	DOZ
SKEW-8	8", Loop Handle, Stainless Steel	DOZ



STK-858/B

## Pakkawood Handle Knife

Item #	Description	UOM	Dimensions
STK-858/B	8-5/8" Serrated Point-Tip, 12 Pack, Stainless Steel	DOZ	22" x 2" x 1"



GSK-62

WSK-60/B

## Gauchos Steak Knives

Item #	Description	UOM
GSK-62	9.75" Rounded-Tip Serrated, Polypropylene, Black	DOZ
WSK-60/B	10" Rounded-Tip Serrated, Wood Handle	DOZ



TPP-12CL

### Plastic Tumblers

Item #	Description	UOM
TPP-16CL	16 oz, Clear Pebble Finish, Stackable, SAN Plastic	DOZ
TPP-12CL	12 oz, Clear Pebble Finish, Stackable, SAN Plastic	DOZ
TPP-9CL	9 oz, Clear Pebble Finish, Stackable, SAN Plastic	DOZ
TPP-8CL	8 oz, Clear Pebble Finish, Stackable, SAN Plastic	DOZ
TPP-5CL	5 oz, Clear Pebble Finish, Stackable, SAN Plastic	DOZ



ICC-5CL

### Clear Dessert Dish

Item #	Description	UOM	Dimensions
ICC-5CL	5 oz, Clear, Scalloped Rim Dessert Dish, SAN Plastic	DOZ	4" x 4" x 2"



SUG-4BK

### Sugar Packet Holders

Item #	Description	UOM	Dimensions
SUG-4BK	Black, Plastic	DOZ	3" x 3" x 2"



SSNH-357

### Napkin Dispensers

Item #	Description	UOM
SSNH-357	Fits 150 - 3.5" x 7" Napkins, Mirror Finish, Stainless Steel	EA



### Tabletop Service

Item #	Description	UOM
BRY-5CL	5 oz, Clear, Scalloped Rim Berry Dish, SAN Plastic	DOZ
BWS-4	Butter Warmer Set: Candle, Glass Holder, Chrome Plated Rack, Stainless Steel Pan	SET
G-600	6 oz, Square Glass Cruet, fits SHR-2	DOZ
SHR-2	2-Slot Cruet Rack, fits G-600, Chrome Plated	EA



CBEL



CHSPIN



GTC-6P



CM-24



CM-36

### Kitchen Essentials

Item #	Description	UOM	Dimensions
CBEL	Call Bell, Nickel Plated Steel	EA	3" x 3" x 2"
CHSPIN	6" Check Spindle, Plastic Cap and Feet, Chrome-plated	EA	3" x 3" x 6"
CM-24	24" Wall-Mounting Check Minder, Aluminum	EA	24" x 3" x 1"
CM-36	36" Wall-Mounting Check Minder, Aluminum	EA	36" x 3" x 1"
GTC-6P	6" Gold Table Crumber, 12 Pack, Pocket Clip, Anodized Aluminum	DOZ	6" x 1" x 0"



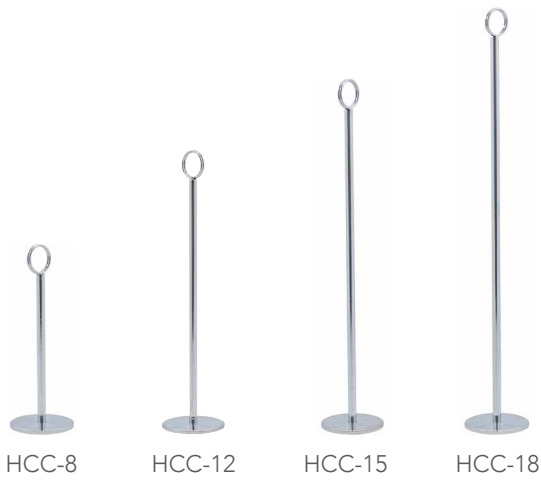
CDJ-6



DNC-6

### Lobster / Nut Crackers

Item #	Description	UOM
CDJ-6	6" Double Jaw, 12 Pack, Chrome Plated Cast Steel	DOZ
DNC-6	6" Single Jaw, Chrome Plated Cast Steel	DOZ
QF-6	6" Embossed Handles, Chrome Plated Cast Steel	DOZ



## Number Stands

Item #	Description	UOM
HCC-12	12" Number Stand, Double Ring Clip, Chrome	DOZ
HCC-15	15" Number Stand, Double Ring Clip, Chrome	DOZ
HCC-18	18" Number Stand, Double Ring Clip, Chrome	DOZ
HCC-8	8" Number Stand, Double Ring Clip, Chrome	DOZ



DMH-3



LCH-2

## Card / Menu Holders

Item #	Description	UOM
DMH-3	Card/Menu Holder, 4-Ring Clip, Chrome	DOZ
LCH-2	Card/Menu Holder, Ring Clip, Gadroon Base, Stainless Steel	DOZ



## Numbered 4"x4" Cards

Item #	Description	UOM
4/1-100	4" Square, Numbered 1-100, Plastic	SET
4/1-25	4" Square, Numbered 1-25, Plastic	SET
4/1-50	Numbered Table Cards (1-50)	SET



Tabletop



DCH-12



CMH-1

## Deluxe Table Signage

Item #	Description	UOM
CMH-1	Card/Menu Holder, Harp Clip, Heavy Cast Base, Stainless Steel	DOZ
DCH-12	12" Number Stand, Harp Clip, Heavy Cast Base, Stainless Steel	DOZ
DCH-6	6" Number Stand, Harp Clip, Heavy Cast Base, Stainless Steel	DOZ
DCH-8	8" Number Stand, Harp Clip, Heavy Cast Base, Stainless Steel	DOZ



RES-48PK

## Reserved Signs

Item #	Description	UOM
RES-48PK	6" x 3" Tent Signs, Varnished White Cardboard	PKG



PEP-18 PEP-12 PEP-8

### Pepper Mills

Item #	Description	UOM
PEP-18	18", Forged Steel Mechanism, Walnut Finish, Wood	EA
PEP-12	12", Forged Steel Mechanism, Walnut Finish, Wood	EA
PEP-8	8", Forged Steel Mechanism, Walnut Finish, Wood	EA



MIN-1/2



SMT-1



TOW-1



MSQ-2

### Salt and Pepper Shakers

Item #	Description	UOM
SMT-1	1 oz, Paneled, Stainless Steel Mushroom Top, Glass	DOZ
GREN-62	2 oz, Stainless Steel Flat Top, Textured Glass	DOZ
MIN-1/2	.5 oz, Mini Cube Set, Chrome Plated Top, Glass	DOZ
MSQ-2	2 oz, Square, Stainless Steel Mushroom Top, Glass	DOZ
SMT-2	2 oz, Paneled, Stainless Steel Mushroom Top, Glass	DOZ
SMT-3	3 oz, Paneled, Stainless Steel Mushroom Top, Glass	DOZ
TOP-MUSH	Mushroom Tops For Panel Shaker	DOZ
TOW-1	1 oz, Tower, Chrome-Plated Top, Glass	DOZ



99SF 90PT GSC-6PT

### Shakers / Pourers

Item #	Description	UOM
99SF	12 oz, Flap Top Pourer, Stainless Steel, Fluted Glass	DOZ
PSJ-12PT	12 oz, Perforated Top, Stainless Steel, SAN Plastic	DOZ
90PT	12 oz, Perforated Top, Stainless Steel, Fluted Glass	DOZ
PSJ-12SF	12 oz, Flap Top, Stainless Steel, SAN Plastic	DOZ
GSC-6PT	6 oz, Cheese Shaker, Perforated Chrome Plated Top, Swirl Glass	DOZ



PBD-8CL/PKG

### Squeeze Out Dispensers

Item #	Description	UOM
PBD-12CL/PKG	12 oz, 6 per pack, White Lid, Clear Plastic	PKG
PBD-24CL/PKG	24 oz, 6 per pack, White Lid, Clear Plastic	PKG
PBD-8CL/PKG	8 oz, 6 per pack, White Lid, Clear Plastic	PKG



WMSB-16CL

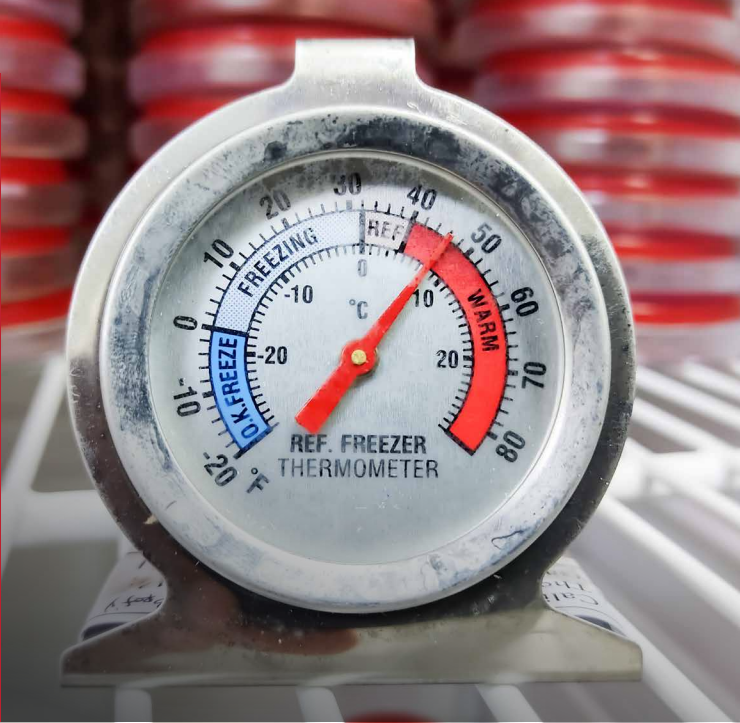
### Wide Mouth Squeeze Bottles

Item #	Description	UOM
WMSB-16CL	16 oz, 6 per pack, White Lid, Clear Plastic	PKG
WMSB-24CL	24 oz, 6 per pack, White Lid, Clear Plastic	PKG
WMSB-32CL	32 oz, 6 per pack, White Lid, Clear Plastic	PKG

# Thermometers & Timers

- Instant Read
- Pocket Test
- Refrigerator/Freezer
- Deep Fry / Candy
- Oven
- Roast & Meat
- Frothing
- Big Digit Timer





Precision tools for perfect timing and temperature—essential for safe, consistent results across every station.



IRT-2



### Instant Read Thermometers



### Pocket Test Thermometers



Item #	Description	UOM
IRT-2	2" Dial, Pen-Style, Pocket Clip, 0° - 220°F, Stainless Steel	EA

Item #	Description	UOM
PT-1	1" Dial, 5.5" Stem, Pen-Style, Pocket Clip, 0° - 220°F, Stainless Steel	EA
PT-2	1" Dial, 5.5" Stem, Pen-Style, Pocket Clip, 40° - 180°F, Stainless Steel	EA
PT-3	1" Dial, 5.5" Stem, Pen-Style, Pocket Clip, 50° - 550°F, Stainless Steel	EA



FT-3



RFT-1



FGT-1

### Refrigerator / Freezer Thermometers



### Freeze Guide Thermometers



Item #	Description	UOM
FT-2	2" Dial, Stand or Hang, -20° - 80° F, Stainless Steel	EA
FT-3	3" Dial, Stand or Hang, -20° - 80° F, Stainless Steel	EA
RFT-1	Shatterproof, -20° - 80°F, Plastic Case, Suction Cup	SET

Item #	Description	UOM
FGT-1	5" Hanging Style, Safe Temp Zone Indicators, 0° - 80°F, Stainless Steel	EA



### Deep Fry / Candy Thermometers



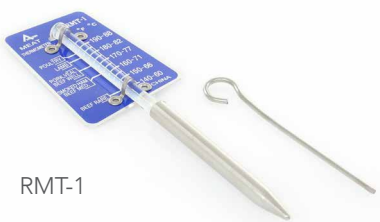
Item #	Description	UOM
DFCT-1	8" Tube with Clip, Red Ball, 100° - 400°F, Glass	EA
DFCT-2	2" Dial, 5" Stem, 100° - 400°F, Stainless Steel	EA
DFCT-2/12	2" Dial, 12.5" Stem, 100° - 400°F, Stainless Steel	EA
DFCT-3	11.75" Glass Tube, Adjustable Clip, Stay-Cool Handle, 100° - 400°F, Stainless Steel Case	EA



### Oven Thermometers



Item #	Description	UOM
OT-2	2" Dial, Stand or Hang, 100° - 600°F, Stainless Steel/Glass	EA
OT-3	3" Dial, Stand or Hang, 100° - 600°F, Stainless Steel/Glass	EA



### Roast/Meat Thermometers

Item #	Description	UOM
RMT-1	Leave-In, 3.25" Stem with Skewer, 140° to 190°F	EA



### Meat Thermometers



Item #	Description	UOM
MT-2	2" Dial, 4" Stem, 130° - 190°F, Stainless Steel	EA
MT-3	3" Dial, 4" Stem, 130° - 190°F, Stainless Steel	EA



### Frothing Thermometers



Item #	Description	UOM
DIGT-1	1" Digital Display, 5" Stem, -40° - 302°F, Stainless Steel	EA
FT-1	1" Dial, 5" Stem, 0° - 220°F, Instant Read, Adjustable Clip, Stainless Steel	EA



### Big Digit Timer

Item #	Description	UOM
BED-20	Large Digital Display, Magnetic Clip-On/Countertop, Counts 20 Hours x 1 Minute Intervals	EA
SMT-199	Large Digital Display, Magnetic Clip-On/Countertop, Counts 99 Minutes x 1 Second Intervals	EA

# NEW COUNTERTOP ELECTRIC EQUIPMENT

Our new countertop electric equipment delivers the power, precision, and durability required in high-volume foodservice. Engineered for efficiency, these compact solutions ensure consistent performance in demanding environments.



COQ1750WS



COH2800S



COH3100WPROS



COF6400WS



## Convection Ovens - S

Item #	Description	Dimensions	Plug Type	Voltage	Wattage	Item Weight lbs	Shipping Weight lbs
COQ1750WS	Quarter Size, Stainless Steel	21" x 20" x 13"	NEMA 5-15P	120V	1750W	48.3	52.9
COH2800S	Half Size, Stainless Steel	24" x 24" x 22"	NEMA 6-15P	240V	2800W	88.0	94.0
COH3100WPROS	Professional Half Size, Stainless Steel	32" x 27" x 23"	NEMA 6-20P	240V	3300W	160.0	165.0
COF6400WS	Professional Full Size, Stainless Steel	33" x 31" x 26"	NEMA 6-50P	220-240V	6400W	205.0	188.0



PUT1800HD



PUT1800MD



## Pop-Up Toasters

Item #	Description	Dimensions	Plug Type	Voltage	Wattage	Item Weight lbs	Shipping Weight lbs
PUT1800HD	Heavy Duty, 4-Slice, Stainless Steel	13" x 13" x 9"	NEMA 5-15P	120V	1800W	17.4	19.0
PUT1800MD	Medium Duty, 4-Slice, Stainless Steel	10" x 12" x 8"	NEMA 5-15P	120V	1800W	5.3	8.4



CVYT120S



## Conveyor Toaster

Item #	Description	Dimensions	Plug Type	Voltage	Wattage	Item Weight lbs	Shipping Weight lbs
CVYT120S	Toasts up to 300 pcs/hr, 120V, Stainless Steel	20" x 15" x 14"	NEMA 5-15P	120V	1700W	17.1	41.9



BWM7RS



BWM7R2S



## Waffle Maker

Item #	Description	Dimensions	Plug Type	Voltage	Wattage	Item Weight lbs	Shipping Weight lbs
BWM7R2S	Double Belgian Waffle Maker, 7" Round	20" x 20" x 13"	NEMA 5-15P	120V	1080W x 2	19.1	49.0
BWM7RS	Single Belgian Waffle Maker, 7" Round	20" x 10" x 13"	NEMA 5-15P	120V	1080W	24.0	26.0



Enhance your kitchen's frying capabilities with the Adcraft Electric Deep Fryers, operating within a temperature range of 160° to 370°F. Manual ignition and thermostatic control simplify operation, while its design allows for easy cleaning and maintenance.



DF6LS



DF6L2S



### Electric Deep Fryers S

Item #	Description	Dimensions	Plug Type	Voltage	Wattage	Item Weight lbs	Shipping Weight lbs
DF6L2S	Double 10 lb (6L) Tank, Stainless Steel	16" x 22" x 11"	NEMA 5-15P	120V	1750W per tank	10.0	12.0
DF6LS	Single 10 lb (6L) Tank, Stainless Steel	16" x 12" x 11"	NEMA 5-15P	120V	1750W	5.0	6.0



DF12LS



DF12L2S



### Electric Deep Fryers with Faucet S

Item #	Description	Dimensions	Plug Type	Voltage	Wattage	Item Weight lbs	Shipping Weight lbs
DF12L2S	Double 16 lb (8L) Tank, Stainless Steel	19" x 23" x 16"	NEMA 6-20P	220-240V	3000-3600W	17.5	19.0
DF12LS	Single 16 lb (8L) Tank, Stainless Steel	19" x 12" x 16"	NEMA 6-20P	220-240V	3000-3600W	10.0	12.0

Color box packaging available on select SKUs to support retail merchandising and shelf-ready presentation.



SG811BS



SG811FS



SG813BS



## Sandwich Grills

Item #	Description	Dimensions	Plug Type	Voltage	Wattage	Item Weight lbs	Shipping Weight lbs
SG813BS	18.80" x 9.2" Double, Grooved Plates, Stainless Steel	15" x 23" x 7"	NEMA 5-15P	120V	1750W	65.3	68.3
SG811BS	8.6" x 9.2" Single, Grooved Plates, Stainless Steel	15" x 12" x 8"	NEMA 5-15P	120V	1750W	17.0	28.7
SG811FS	8.6" x 9.2" Single, Flat Plates, Stainless Steel	15" x 12" x 8"	NEMA 5-15P	120V	1750W	31.3	32.5



SG811EFBS



SG811ES



## Panini Grills

Item #	Description	Dimensions	Plug Type	Voltage	Wattage	Item Weight lbs	Shipping Weight lbs
SG811EFBS	13.4" x 9.2" Flat Plates, Stainless Steel	15" x 17" x 8"	NEMA 5-15P	120V	1750W	32.5	42.9
SG811ES	13.4" x 9.2" Grooved Plates, Stainless Steel	15" x 17" x 8"	NEMA 5-15P	120V	1750W	32.5	42.9

# MixStick PRO™

Immersion Blenders by **ADCRAFT**



Adcraft Heavy Duty 750W Commercial Immersion Blender - 16" Shaft  
**ACIB75016**

Adcraft Heavy Duty 350W Commercial Immersion Blender - 10" Shaft  
**ACIB35010**

Adcraft Heavy Duty 175W Commercial Immersion Blender 8" Shaft  
**ACIB17508**



The MixStick PRO™ Immersion Blenders from Adcraft are the perfect tool for commercial kitchens of all sizes. It is versatile, powerful, and easy to use.



## MixStick PRO Immersion Blenders



Item #	Description	Dimensions	Plug Type	Voltage	Wattage	Item Weight lbs	Shipping Weight lbs
ACIB75016	16" Shaft, Black	6" x 4" x 30"	NEMA 5-15P	120V	750W	7.8	9.7
ACIB35010	10" Shaft, Black	6" x 4" x 24"	NEMA 5-15P	120V	350W	7.4	9.7
ACIB17508	8" Shaft, Black	3" x 3" x 20"	NEMA 5-15P	120V	175W	3.2	5.2

# Feature packed!

& ready for any professional kitchen application

Safety Button



**Comfortable and Ergonomic Rubberized Grip** makes blending comfortable for extended periods of time, even when your hands are wet.

Continuous Operation



**Hands Free Continuous-ON Functionality** allows you to blend without having to hold down the button. This is ideal for recipes that require extended blending time.

**18,000 RPM High Speed** ensures that your blends are smooth and even.

Interchangeable Blade



**16" Stainless Steel Shaft and Blade** are durable and corrosion-resistant, making them ideal for commercial use. They can also be used for a variety of tasks, including blending, mixing, and chopping.

**Shaft and Blade are Sealed and Dishwasher Safe** for easy cleaning and maintenance.

Speed Control



**1HP Heavy Duty Variable Speed Motor** provides plenty of power to blend even the toughest ingredients, while the variable speed control allows you to fine-tune the consistency of your blends.

Rubberized trigger



Wall Mount



**Wall Mount Bracket** included for easy storage when the blender is not in use.

**A capacity of 35-gallons or 140-quarts** makes the Adcraft Immersion Blender ideal for blending large batches of food.

**Cord:** 94" cord with NEMA 5-15P Plug



Adcraft Heavy Duty 750W Commercial Immersion Blender - 16" Shaft  
**ACIB75016**

Adcraft Heavy Duty 350W Commercial Immersion Blender - 10" Shaft  
**ACIB35010**

# Beverage and Bar

- Granita Machines
- Juice Dispensers
- Water Boiler
- Coffee & Tea Dual Warmer Plate
- Glass Washer





SGM-2



SGM-1

### Granita Machines

Item #	Description	Volts	Watt	Dimensions
SGM-2	6 gal Double Hopper Frozen Beverage, Black	115V	960W	20" x 19" x 32"
SGM-1	3 gal Single Hopper Frozen Beverage, Black	115V	500W	20" x 11" x 32"



JD-2



JD-1

### Juice Dispensers

Item #	Description	Volts	Watt	Dimensions
JD-2	6 gal Double Cold Beverage Dispenser, Gray	110V	300W	17" x 17" x 25"
JD-1	3 gal Single Cold Beverage Dispenser, Gray	110V	278W	17" x 9" x 25"



WB-100



WB-40

### Water Boiler



Item #	Description	Volts	Watt	Dimensions
WB-100	100 Cup Hot Water Dispenser, Stainless Steel	120V	1350W	13" x 11" x 23"
WB-40	40 Cup Hot Water Dispenser, Stainless Steel	120V	1350W	11" x 9" x 19"



WP-2

### Coffee & Tea

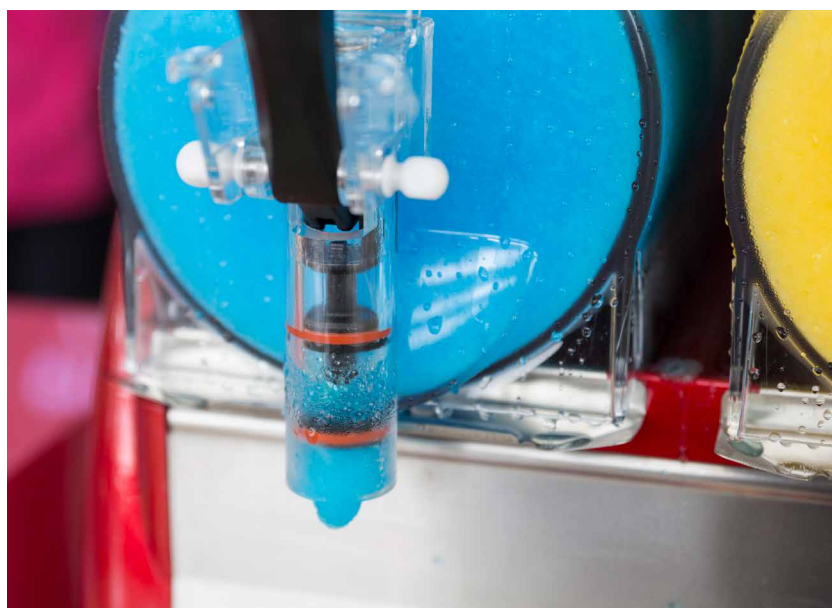
Item #	Description	Volts	Watt	Dimensions
WP-2	Dual Warmer Plate	120V	200W	15" x 9" x 3"



GW-120

### Glass Washer

Item #	Description	Volts	Watt	Dimensions
GW-120	Redhead Bar Glass Washer, Black	120V		6" x 12" x 17"



# Electric Cooking Equipment

- Induction Cookers
- Steamer
- Microwaves
- Pizza Ovens
- Salamander
- Cheese Melters
- Electric Griddles
- Sous Vide
- Rice Cooker





IND-A120V



IND-E120V



IND-C208V



## Countertop Induction Cookers

Item #	Description	Dimensions	Plug Type	Voltage	Wattage	Item Weight lbs	Shipping Weight lbs
IND-A120V	15" Slim Design, Stainless Steel & Black	13" x 15" x 3"	NEMA 5-15P	120V	1800W	8.6	9.7
IND-E120V	9" Drop-In, Black	15" x 13" x 4"	NEMA 5-15P	120V	1800W	8.8	9.9
IND-C208V	15.55" Manual Control, Stainless Steel & Black	13" x 16" x 5"	NEMA 6-20P	208V	3000W	12.1	13.2



IND-D120V



IND-DR120V

## Drop In Induction Cookers

Item #	Description	Dimensions	Plug Type	Voltage	Wattage	Item Weight lbs	Shipping Weight lbs
IND-D120V	14.65" Drop-In, Black	12" x 15" x 3"	NEMA 5-15P	120V	500/1800W	6.4	7.5
IND-DR120V	9" Drop-In with Remote Control, Black	12" x 12" x 3"	NEMA 5-15P	120V	500/1800W	7.7	8.8



CTS-1800W



ACMIC1000D



ACMIC1000E

## Steamer

Item #	Description	Volts	Watt	Dimensions
CTS-1800W	Fresh Shot Countertop Steamer, Stainless Steel	120V	1800W	20" x 19" x 12"

## Countertop Microwaves



Item #	Description	Volts	Watt	Dimensions
ACMIC1000E	Digital Touch Pad, 1000 Watt, Stainless Steel	120V	1500W	14" x 20" x 12"
ACMIC1000D	Dial Control, 1000 Watt, Stainless Steel	120V	1500W	14" x 20" x 12"



PO-22



PO-18



CK-2

### Pizza / Snack Ovens

Item #	Description	Dimensions	Plug Type	Voltage	Wattage	Item Weight lbs	Shipping Weight lbs
PO-22	22" Double Ceramic Shelf, Stainless Steel	28" x 26" x 21"	NEMA 6-20P	240V	3600W	170.0	178.4
PO-18	18" Double Ceramic Shelf, Stainless Steel	25" x 23" x 21"	NEMA 6-20P	240V	2850W	140.0	146.0
CK-2	12" Single Shelf, Stainless Steel	19" x 16" x 7"	NEMA 5-15P	120V	1450W	11.8	14.1



SAL-4000W



SAL-2800W

### Electric Salamanders

Item #	Description	Dimensions	Plug Type	Voltage	Wattage	Item Weight lbs	Shipping Weight lbs
SAL-4000W	23", 4000W, Stainless Steel	18" x 23" x 21"	NEMA 6-20P	208/240V	4000W	108.0	114.5
SAL-2800W	17", 2800W, Stainless Steel	7" x 7" x 8"	NEMA 6-20P	208/240V	2800W	91.0	92.5



CHM-4350W



CHM-2400W



CHM-1200W

### Electric Cheese Melters

Item #	Description	Dimensions	Plug Type	Voltage	Wattage	Item Weight lbs	Shipping Weight lbs
CHM-4350W	32" Electric Cheesemelter, Stainless Steel	32" x 18" x 19"	NEMA 6-20P	240V	4350W	70.0	70.5
CHM-2400W	23" Electric Cheesemelter, Stainless Steel	6" x 9" x 6"	NEMA 6-20P	240V	2400W	44.0	41.9
CHM-1200W	24" Electric Cheesemelter, Stainless Steel	12" x 24" x 11"	NEMA 5-15P	120V	1200W	37.5	35.2



GRID-30



GRID-24



GRID-16

## Electric Griddles



Item #	Description	Dimensions	Plug Type	Voltage	Wattage	Item Weight lbs	Shipping Weight lbs
GRID-30	30" Smoothtop, Stainless Steel	30" x 20" x 11"	NEMA 6-20P	208V-240V	3380W-4500W	51.0	57.5
GRID-24	24" Smoothtop, Stainless Steel	24" x 20" x 11"	NEMA 6-20P	208V-240V	2680W-3570W	44.0	48.0
GRID-16	16" Smoothtop, Stainless Steel	16" x 20" x 11"	NEMA 5-15P	120V	1750W	27.5	32.5



SV-1200W

## Sous Vide

Item #	Description	Volts	Watt	Dimensions
SV-1200W	Black 4.25" Immersion Circulator Head, 120V, Stainless Steel	120V	1200W	6" x 4" x 12"



RC-0030



RC-E30



RC-E50

## Rice Cooker

Item #	Description	Volts	Watt	Dimensions
RC-0030	30 Cup, White, Aluminum	110V		13" x 17" x 14"
RC-E30	30 Cup, White, Aluminum		1650W	15" x 15" x 11"
RC-E50	50 Cup, White, Aluminum	208/240V	2630/3500W	22" x 22" x 12"



# Food Warming & Holding

- Food Warmers
- Soup Warmers
- Rice Warmers
- Display Warmers
- Heat Lamps
- Heater Proofer Cabinet
- Plate Warmer
- Steam Table
- Heater Proofer Cabinets

Food Warming & Holding





## Food Warmer



Item #	Description	Volts	Watt	Dimensions
FW-1500W	Holds Four 1/3 Size, Stainless Steel	120V	1500W	9" x 30" x 10"
FW-1500W/C	14 qt Full Size Slow Cooker & Warmer, Stainless Steel	120V	1500W	9" x 15" x 23"
FW-1200W	14 qt Full Size, Stainless Steel	120V	1200W	9" x 15" x 23"

FW-1200WR



FW-1200WR/B

## Round Food Warmer

Item #	Description	Volts	Watt	Dimensions
FW-1200WR	11 qt Slow Cooker & Warmer, Stainless Steel	120V	1200W	10" x 12" x 10"
FW-1200WR/B	11 qt Slow Cooker & Warmer, Black, Stainless Steel	120V		10" x 12" x 10"

SK-500W



## Soup Warmer

Item #	Description	Volts	Watt	Dimensions
SK-500W	11.4 qt Premium Kettle, Black, Stainless Steel	120V	475-580W	16" x 16" x 15"

RW-E50



## Rice Warmer

Item #	Description	Volts	Watt	Dimensions
RW-E50	50 Cup, Stainless Steel			14" x 14" x 16"

IDW-940W



## Infrared Display Warmer

Item #	Description	Volts	Watt	Dimensions
IDW-940W	Holds 2" Deep Full Size Pan, Stainless Steel	120V	940W	5" x 9" x 8"

HL-2



## Heat Lamp



Item #	Description	Volts	Watt	Dimensions
HL-2	Adjustable 2-Bulb, Aluminum	120V	500W	17" x 14" x 31"

LR-2



## Plate Warmer

Item #	Description	Dimensions	Plug Type	Voltage	Wattage	Item Weight lbs	Shipping Weight lbs
LR-2	160 Plate, Adjustable Heated Lowerator, Stainless Steel	18" x 42" x 33"	NEMA 5-15P	120V	1260W	158.0	168.0



EST-240



ST-120/3



ST-120/2



## Steam Table

Item #	Description	Dimensions	Plug Type	Voltage	Wattage	Item Weight lbs	Shipping Weight lbs
ST-120/2	2 Bay, Open Well Steam Table, Stainless Steel	31" x 33" x 34"	NEMA 6-20P	120	1500	82.5	79.0
ST-120/3	3 Bay, Open Well Steam Table, Stainless Steel	31" x 49" x 34"	NEMA 5-30P	125	2250	104.8	113.0
ST-240/4	4 Bay, Open Well Steam Table, Stainless Steel	31" x 64" x 34"	NEMA 6-20P	208/240V	3000W	130.0	139.0
EST-240	4 Bay, Water Bath Table, Stainless Steel	26" x 57" x 34"	Nema 6-20	208/240	3000	68.0	70.6
EST-240/PCB	White Polycarbonate Cutting Board, Stainless Steel Shelf	9" x 57" x 1"	N/A	N/A	N/A	18.8	16.3
EST-240/TH	4-Rail Tray Holder, Stainless Steel	14" x 57" x 2"	N/A	N/A	N/A	10.0	8.8



PW36



PW36I



PWDRAWER120

## Heater Proofer Cabinet

Item #	Description	Dimensions	Plug Type	Voltage	Wattage	Item Weight lbs	Shipping Weight lbs
PW36	36 Pan, Full Size, Non-Insulated, Stainless Steel	60" x 34" x 23"	NEMA 5-15P	120V	1500W	120.0	139.0
PW36I	36 Pan, Full Size, Insulated, Stainless Steel	60" x 34" x 23"	NEMA 5-15P	120V	1500W	120.0	139.0
PWDRAWER120	Modular Drawer for Heater Proofers (PW36 & PW36I)	20" x 17" x 7"					

# Concessions & Food Display

- Popcorn Maker
- Cotton Candy Machine
- Heated Display Case
- Hot Dog Rollers
- Cotton Candy Machine
- Pizza Merchandiser
- Hot Food Display



PCM-8L



PCM-8LC



PCM-8



PCM-8C



## Air Popcorn Makers

Item #	Description	Dimensions	Plug Type	Voltage	Wattage	Item Weight lbs	Shipping Weight lbs
PCM-8L	8 oz Popcorn Machine, Red	22" x 17" x 30"	B	110V	1320W	48.8	55.9
PCM-8LC	Cart for PCM-8L Popcorn Machine	15" x 14" x 15"	N/A	N/A	N/A	19.2	38.0
PCM-8	8 oz Popcorn Machine, Red	15" x 12" x 24"	B	110V	1150W	37.0	37.0
PCM-8C	Cart for PCM-8 Popcorn Machine	12" x 13" x 15"	N/A	N/A	N/A	12.0	



COT-21



COTND-21

## Cotton Candy Machine

Item #	Description	Dimensions	Plug Type	Voltage	Wattage	Item Weight lbs	Shipping Weight lbs
COT-21	With Stainless Steel Supply Drawer	21" x 21" x 20"	B	110V	1080W	31.0	31.0
COTND-21	No Drawer	21" x 21" x 16"	B	110V	1080W	24.0	24.0



HD-26



HD-36



HD-48



## Heated Display Case

Item #	Description	Dimensions	Plug Type	Voltage	Wattage	Item Weight lbs	Shipping Weight lbs
HD-26	26" Black, Adjustable Shelves, Double Wall Stainless Steel	26" x 17" x 25"	NEMA 5-15P	120V	1500W	114.5	114.5
HD-36	36" Black, Adjustable Shelves, Double Wall Stainless Steel	35" x 19" x 23"	NEMA 5-15P	120V	1500W	147.6	147.6
HD-48	48" Black, Adjustable Shelves, Double Wall Stainless Steel	20" x 47" x 32"	NEMA 5-15P	120V	1500W	213.7	219.0

HDS-1300W/100



## Hot Dog Steamer



Item #	Description	Volts	Watt	Dimensions
HDS-1300W/100	100 Hot Dog & 48 Bun Capacity, Tempered Glass, Stainless Steel	120V	1300W	14" x 18" x 16"



RG-05



RG-07



RG-09



RG-09/COV

## Hot Dog Rollers



Item #	Description	Dimensions	Plug Type	Voltage	Wattage	Item Weight lbs	Shipping Weight lbs
RG-05	5 Roller, 12 Hot Dog, Stainless Steel	9" x 9" x 23"	NEMA 5-15	120V	430W	21.6	24.0
RG-05/COV	Cover for RG-05, Clear Acrylic	23" x 10" x 7"	N/A	N/A	N/A	2.6	30.0
RG-07	7 Roller, 18 Hot Dog, Stainless Steel	5" x 9" x 3"	NEMA 5-15P	120V	590W		30.8
RG-07/COV	Cover for RG-07, Clear Acrylic	23" x 13" x 7"	N/A	N/A	N/A	3.4	40.6
RG-09	9 Roller, 24 Hot Dog, Stainless Steel	15" x 23" x 8"		120V	750W	37.0	37.4
RG-09/COV	Cover for RG-09, Clear Acrylic	23" x 16" x 7"	N/A	N/A	N/A	4.2	49.0

HDRP-158



## Pizza Merchandiser

Item #	Description	Volts	Watt	Dimensions
HDRP-158	Rotating 4-Tier, Holds 18" Pizzas, Stainless Steel & Glass			25" x 24" x 28"

HFD-85



## Hot Food Display

Item #	Description	Volts	Watt	Dimensions
HFD-85	85 Liter, Countertop, Stainless Steel			32" x 28" x 27"

# Food Preparation

- Meat Slicer
- Meat Grinder & Attachments
- Vacuum Sealers
- Dish Boxes
- Lugs
- Freezer Boxes
- Utensil Boxes
- High Chairs
- Utility Carts
- Work Tables
- Equipment Stand



SL-9



SL-10



SL-12L

## Meat Slicer

Item #	Description	Dimensions	Plug Type	Voltage	Wattage	Item Weight lbs	Shipping Weight lbs
SL-9	9" Carbon Steel Blade, Die-cast Aluminum	16" x 18" x 16"	NEMA 5-15P	120V	180W	26.0	31.0
SL-10	10" Carbon Steel Blade, Die-cast Aluminum	17" x 20" x 17"	NEMA 5-15P	120V	250W	32.0	37.0
SL-12L	12" Carbon Steel Blade, Die-cast Aluminum	21" x 25" x 21"	NEMA 5-15P	120V	350W	58.0	70.0



1A-CG412



1A-CG422

## Meat Grinder

Item #	Description	Dimensions	Plug Type	Voltage	Wattage	Item Weight lbs	Shipping Weight lbs
1A-CG412	#12, Up to 540 lbs/hr, Stainless Steel	22" x 11" x 16"	NEMA 5-15P	120V	750W	53.0	59.0
1A-CG422	#22, Up to 720 lbs/hr, Stainless Steel	24" x 13" x 17"	NEMA 5-15P	120V	1100W	63.0	69.0



12HCOMPL

## Grinder Attachment

Item #	Description	UOM	Dimensions
12HCOMPL	Grinder Attachment, fits Hobart, Cast Steel	EA	13" x 17" x 10"



VS-300

## Vacuum Sealers

Item #	Description	Volts	Watt	Dimensions
VS-300	Tabletop Chamber Vacuum, Stainless Steel	110V		19" x 14" x 14"

# Storage & Transport

- Dish Boxes
- Freezer Boxes
- Utensil Boxes and Cylinder
- High Chair
- Utility Carts
- Equipment Stands
- Work Table





DB7-1520GY

DB-1520C/GY

### Dish Boxes

Item #	Description	UOM	Dimensions
DB-1520C/GY	Dish Tote Box Cover, Gray	EA	23" x 17" x 1"
DB7-1520GY	7" Dish Tote Box, Gray	EA	22" x 16" x 7"



NSL-2616

NSL-2616CG

### Lugs

Item #	Description	UOM	Dimensions
NSL-2616	8" Deep Nesting Lug Bin, Gray	EA	25" x 16" x 9"
NSL-2616CG	Lug Bin Cover	EA	25" x 16" x 2"



PFB-1520

PFB-1520C

### Freezer Boxes

Item #	Description	UOM	Dimensions
PFB-1520	7" Deep Freezer Box, White	EA	22" x 16" x 7"
PFB-1520C	Freezer Box Cover, White	EA	23" x 17" x 1"

Built for busy kitchens—  
rugged storage and  
transport tools that keep  
everything moving and  
organized.



CYL-SS

CYL-M

CBP-4

### Utensil Boxes

Item #	Description	UOM	Dimensions
CYL-SS	Perforated Silverware Cylinder, Stainless Steel	EA	5" x 5" x 5"
CYL-M	Perforated Silverware Cylinder, Frost White	EA	4" x 4" x 5"
CBP-4	4-Compartment Cutlery Bin, Gray	EA	21" x 12" x 4"



1624-3

DCRT

### Utility Carts

Item #	Description	UOM	Dimensions
1624-3	3 Shelf Utility Cart, Stainless Steel	EA	30" x 17" x 37"
DCRT	3 Shelf Dish Cart, Holds Rubbermaid® 3351, Stainless Steel	EA	16" x 28" x 42"



HCW-1



HCW-5

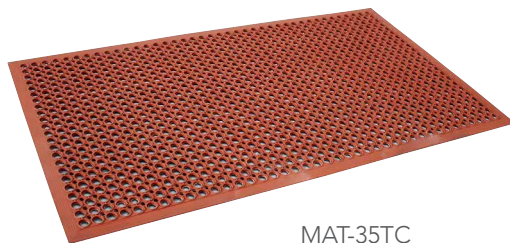
### High Chair

Item #	Description	UOM
HCW-1	Assembled, Stackable, Reinforced Joints, Natural Finish, Wood	EA
HCW-1KD	Knocked Down, Stackable, Reinforced Joints, Natural Finish, Wood	EA
HCW-5	Assembled, Stackable, Reinforced Joints, Mahogany Finish, Wood	EA
HCW-5KD	Knocked Down, Stackable, Reinforced Joints, Mahogany Finish, Wood	EA

MAT-3512BK



MAT-3534BK



MAT-35TC

Stay comfortable and safe on your feet—our anti-fatigue mats provide cushioning and traction for all-day support in the kitchen and beyond.

### Floor Mats

Item #	Description	UOM
MAT-3512BK	3' x 5' Black, 1/2" Thick, Anti-Fatigue, Rubber	EA
MAT-3534BK	3' x 5' Black, 7/8" Thick, Anti-Fatigue, Rubber	EA
MAT-35TC	3' x 5' Terra Cotta, Beveled Edge, Flexible Anti-Fatigue, Rubber	EA



### 30" Work Tables



Item #	Description	UOM	Dimensions
WT-3072-E	72" Wide, Stainless Steel	EA	30" x 72" x 35"
WT-3060-E	60" Wide, Stainless Steel	EA	30" x 60" x 35"
WT-3048-E	48" Wide, Stainless Steel	EA	30" x 48" x 35"



### 30" Equipment Stand



Item #	Description	UOM	Dimensions
ES-3072	72" Wide, Stainless Steel	EA	30" x 72" x 24"
ES-3060	60" Wide, Stainless Steel	EA	30" x 60" x 24"
ES-3048	48" Wide, Stainless Steel	EA	30" x 48" x 24"
ES-3036	36" Wide, Stainless Steel	EA	30" x 36" x 24"
ES-3024	24" Wide, Stainless Steel	EA	30" x 24" x 24"



### 24" Work Tables



Item #	Description	UOM	Dimensions
WT-2448-E	48" Wide, Stainless Steel	EA	24" x 48" x 35"
WT-2436-E	36" Wide, Stainless Steel	EA	24" x 36" x 35"
WT-2424-E	24" Wide, Stainless Steel	EA	24" x 24" x 35"



ES-2424

### 24" Equipment Stand



Item #	Description	UOM	Dimensions
ES-2448	48" Wide, Stainless Steel	EA	24" x 48" x 24"
ES-2436	36" Wide, Stainless Steel	EA	24" x 36" x 24"
ES-2424	24" Wide, Stainless Steel	EA	24" x 24" x 24"

# Index by Product Name

## A

Adapter Bars	73
Adapter Plates	73
Airpots	22
Aprons	80
Au Gratin	82

## B

Bain Marie Covers	72
Bain Maries	72
Baking Pan	5
Baking Pan Cover	5
Bar Caddies	14
Bar Organizer	14
Bar Shakers	15
Bar Spoons	15
Bar Strainer	15
Bar Tools	15
Basting Spoons	49
Berry Dish	84
Berry Spoon	41
Beverage Dispensers	97
Beverage Servers	61
Biscuit Cutter Sets	7
Bottle Openers	15
Bowls	63
Brazier Pots	27, 30
Bread Baskets	83
Bread Board	36
Bun Pans	5
Butter Warmer	84

## C

Cake Decorating Set	8
Cake Stands and Covers	8
Call Bell	84
Can Openers	46, 58
Casseroles	60
Cast Iron Skillets	82
Cater Trays	60
Catering Trays	60
Chafing Dishes	19, 20
Chafing Pans	19, 20
Check Minders	84
Check Spindle	84
Cheese Cutter	47

Cheese Melters	100
China Caps	54
Cleavers	53
Coffee Decanters	23, 61
Coffee Percolators	21
Coffee Urns	21
Colanders	55
Condiment Dispensers	14
Convection Ovens	90
Conveyor Toaster	91
Cookie Cutter Sets	7
Cookware Set	32
Corer	46
Corers	47
Corkscrews	15
Cotton Candy Machines	106
Covers / Lids	26, 73
Creamers	62
Cruet	84
Cruet Rack	84
Crumber	84
Culinary Basket	54
Cutting Board Racks	36
Cutting Boards	35, 36

## D

Decorating Comb	8
Deep Fryers	92
Deli Pan Covers	71
Deli Pan Lids	62
Deli Pans	71
Dessert Dishes	84, 63
Dippers	49
Dish Boxes	111
Dishers / Portioners	47
Divided Food Pans	19
Donut Screens	6
Dough Box	77
Dough Cutters	7, 43
Dough Pans	77
Dough Roller Docker	77
Dredges	7

## E

Egg Beater	11
Egg Slicer	57
Equipment Stands	113

## F

Fajita Pans	82
-------------	----

False Bottoms	73
Flatware	38, 39, 40
Floor Mats	112
Food Mills	6
Food Warmers	103
Freezer Boxes	111
French Fry Cutters	58
French Fry Scoop	51
French Whips	11
Fry Pans	25, 29, 31
Fryer / Pasta Pans	28
Fryer Baskets	28, 33
Funnels	10

## G

Garlic Press	46
Glass Rimmer	15
Glass Washer	97
Glazing Screens	6
Gloves	80
Gooseneck Servers	61
Granita Machines	97
Graters	56, 57
Grates	32
Gravy & Sauce Boats	62
Griddles	101
Grinder Attachment	109

## H

Hamburger Mold	57
Heat Lamps	103
Heated Display Cases	106
High Chairs	112
Hot Chocolate Dispensers	21
Hot Dog Rollers	107
Hot Dog Steamer	107
Hot Food Display	107

## I

Ice Chipper	15
Ice Cream Dippers	47
Ice Cream Spade	47
Ice/Relish Bowl	63
Immersion Blenders	94-95
Induction Cookers	99

## J

Jigger	15
Juice Dispenser	21

## K

Kettle Whip	58
Kitchen Forks	52
Knife Rack	53
Knife Sharpener	44
Knives	41, 44, 45, 83

## L

Ladles	41, 48, 49
Ladoons	48
Lemon/Lime Squeezer	15
Loaf Pan	5
Lobster / Nut Crackers	84
Lugs	111

## M

Magnetic Bars	53
Malt Cup	15
Mandolins	58
Mayonnaise Whip	58
Measuring Cups	46
Measuring Spoons	10
Meat Grinders	58, 109
Meat Slicers	109
Meat Tenderizers	57
Melon Baller	57
Menu Holders	85
Microwaves	99
Mixing Bowls	65
Mixing Paddles	12
Mixing Spoons	11
Muddlers	15
Muffin Pans	5

## N

Napkin Dispensers	84
Number Cards	85
Number Stands	85

## O

Oil Can	62
Oven Mitts	79
Oyster Knife	46

## P

Pan Grabber	79
Panini Grills	93
Pasta Cookers	32
Pastry Bags	9
Pastry Blender	7
Pastry Brushes	11
Pastry Tubes	9
Peelers	46, 47, 56

Pepper Mills	86
Piano Whips	11
Pie Servers	41, 43, 52
Pitchers	16, 61
Pizza / Snack Ovens	100
Pizza Cutters	43, 46, 53
Pizza Merchandiser	107
Pizza Peels	76
Pizza Screens	75
Pizza Stands	75
Pizza Trays	75
Plastic Couplings	9
Plastic Tumblers	84
Plate Covers	62
Plate Warmer	103
Platters	60
Popcorn Makers	106
Pot Covers	30
Pot Forks	41
Pot Holders	79
Potato Mashers	56
Potato Ricer	56
<b>R</b>	
Reserved Signs	85
Revolving Server	62
Rice Cookers	101
Rice Warmers	103
Rolling Pins	12, 77
<b>S</b>	
Salad Bowls	83
Salad Tongs	50
Salamanders	100
Salt and Pepper Shakers	86
Sandwich Grills	93
Sauce Cups	63
Sauce Pans	27, 31
Scoops	51
Scrapers	9, 43, 52, 57
Serrator	57
Servers	61
Serving Spoons	41
Serving Trays	17
Shakers / Pourers	86
Shears	53
Sieves	6
Sifters	7
Spillage Pan	73

Sizzling Platters	82
Skewers	83
Skimmers	55
Sleeves	32
Soup Warmers	103
Sous Vide	101
Spatulas	52
Spreaders	43, 52
Springform Pans	6
Squeeze Bottles	86
Stainless Steel Sponges	57
Steak Knives	83
Steak Weight	57
Steam Baskets	27
Steam Table	104
Steam Table Pan Covers	70
Steam Table Pans	68, 69
Steam Tables	104
Steamer	99
Stock Pots	26, 30
Strainers	54, 56
Sugar Packet Holders	84
<b>T</b>	
Table Signs	85
Thermometers	88, 89
Timers	88, 89
Toasters	91
Tongs	50, 51
Toothpick Dispenser	15
Towels	80
Tray Stands	16
Trays	60
Turners	43, 46, 48, 51, 52
<b>U</b>	
Underliners	82
Utensil Boxes	111
Utility Carts	111
Utility Pails	63
<b>V</b>	
Vacuum Flasks	23
Vacuum Sealers	109
Vegetable Insets	73
<b>W</b>	
Waffle Makers	91
Warmer Plate	23, 97

Water Boilers	97
Water Pan	19
Wedding Cake Set	41
Wine Buckets	16
Wine Buckets Stands	16
Wine Glass Hanger	16
Wire Brush	57
Work Tables	113
Woven Wood Plates	83
<b>Z</b>	
Zesters	46

## Index by Product Number

107	46
10HC	58, 109
11AB-3636WH	80
11CB-T2017	80
11M-FG13	79
11M-FG15	79
11M-FG17	79
11M-FG24	79
11M-SIL17	79
11PG-SB	79
11PH-FG8	79
12HCOMPL	109
1624-3	111
165F2	71
165F4	71
165F6	71
165H2	71
165H4	71
1A-CG412	58, 109
1A-CG422	58, 109
200F2	68, 69
200F4	68, 69
200F6	68, 69
200H2	68, 69
200H4	68, 69
200H6	68, 69
200HL2	68, 69
200HL4	68, 69
200HL6	68, 69
200N2	68, 69
200N4	68, 69
200Q2	68, 69
200Q4	68, 69
200Q6	68, 69
200S2	68, 69
200S4	68, 69
200S6	68, 69
200T2	68, 69
200T4	68, 69
200T6	68, 69
200TT2	68, 69
200TT4	68, 69
200TT6	68, 69
22F2	68, 69
22F4	68, 69
22F6	68, 69
22H2	68, 69
22H4	68, 69
22H6	68, 69
22HC	58, 109
22N2	68, 69
22N4	68, 69
22Q2	68, 69
22Q4	68, 69
22Q6	68, 69
22S2	68, 69
22S4	68, 69
22S6	68, 69
22T2	68, 69
22T4	68, 69
22T6	68, 69
4/1-100	85
4/1-25	85
4/1-50	85
407	46
6606	53
75-S	57
90PT	86
99SF	86
<b>A</b>	
AB-12	73
AB-20	73
AB-40	6
AB-50	6
AB-60	6
ACIB17508	94-95

ACIB35010	94-95	AT-1608/12	11	BA-DS/B	39	BP-1318	5
ACIB75016	94-95	AT-3112/12	9	BA-DTS/B	39	BP-1826	5
ACMIC1000D	99	AT-3114/12	9	BA-ITS/B	39	BP-1826H	5
ACMIC1000E	99	AT-3116/12	9	BA-LTS/B	39	BP-1826P	5
ADD-6WH	7, 43	AT-3118/12	9	BA-OF/B	39	BP-9513	5
AES-1	57	AT-3121/12	9	BA-SF/B	39	BRGH-10/PKG	16
AGP-75	46	AT-3124	9	BA-TBF/B	39	BRGH-16/PKG	16
AHM-5	57	AT-3212/12	9	BA-TBS/B	39	BRGH-24/PKG	16
AL275-DF/B	38	AT-3214/12	9	BAR-3PC	15	BRSS-15	30
AL275-DK/B	38	AT-3216/12	9	BC-4ST	14	BRSS-20	30
AL275-DS/B	38	AT-3218/12	9	BED-20	88, 89	BRSS-25	30
AL275-LTS/B	38	AT-3221/12	9	BFSM-1125	28, 33	BRSS-30	30
AL275-TBS/B	38	AT-3224/12	9	BFSM-850	28, 33	BRY-5CL	84
ALC-11	55	AT-334	8	BFSM-950	28, 33	BS-30	15
ALC-16	55	AT-400/10	9	BFW-1125	28, 33	BS-825	54, 56
ALC-8	55	AT-5307	7	BFW-850	28, 33	BS-90/PKG	15
ALM-05	10	AT-5357	7	BFW-950	28, 33	BST-22/PKG	15
ALM-1	10	AT-612	8	BG-10	62	BWM7R2S	91
ALM-2	10	AT-782	8	BG-16	62	BWM7RS	91
ALM-4	10	AT-783	8	BG-3	62	BWS-4	84
ALS-11	51	AT-9829	9	BG-5	62	BXGR-4	56, 57
ALS-12	51	ATD-4S	15	BG-8	62	<b>C</b>	
ALS-5	51	AV-BK/B	38	BHS-13PE	49	CAM-5	20
ALS-6	51	AV-BLS/B	38	BHS-13SL	50	CAM-5FP	20
ALS-8	51	AV-BQS/B	41	BHS-13SO	50	CAN-1	58
ALS-9	51	AV-DF/B	38	BHS-15PE	49	CAN-2	58
AM/NS-24	5	AV-DK/B	38	BHS-15SSL	50	CAP-10C	54
AMC-100	47	AV-DS/B	38	BHS-15SO	50	CAP-10F	54
AMC-30	47	AV-DTS/B	38	BK-8	52	CAP-12C	54
AMC-40	47	AV-ITS/B	38	BMP-1	72	CAP-12F	54
AMC-50	47	AV-LSS/B	41	BMP-12	72	CAP-8C	54
AMC-60	47	AV-LTS/B	38	BMP-12C	72	CAP-8F	54
AMC-70	47	AV-OF/B	38	BMP-1C	72	CB-10C	54
AMP-12	5	AV-SF/B	38	BMP-2	72	CB-10F	54
AMP-24	5	AV-TBF/B	38	BMP-2C	72	CB-10M	54
APE22	22	AV-TBK/B	38	BMP-3	72	CB-12C	54
APPLE19	22	AV-TBS/B	38	BMP-3C	72	CB-12F	54
APPLE22	22	AWC-9	16	BMP-4	72	CB-12M	54
APPLE25	22	<b>B</b>		BMP-4C	72	CB-8C	54
APPLE30	22	BA-3423BK	80	BMP-6	72	CB-8F	54
AT-1441/12	7	BA-3423BU	80	BMP-6C	72	CB-8M	54
AT-1442/12	7	BA-3423WH	80	BMP-8	72	CBEL	84
AT-1446/12	8	BA-BLS/B	39	BMP-8C	72	CBP-4	111
AT-1601/12	11	BA-DF/B	39	BO-1270	14	CBR-6BK	36
AT-1602/12	11	BA-DK/B	39	BOT-8	15	CBRS-6	36
AT-1603/12	11			BOX-1826	77		

CBW-1830	35, 36	COTND-21	106	CUT-6.25WBWH	45	DC-200H	71
CBW-610	35, 36	CP-100	21	CUT-6CBWH	45	DCD-4BK	14
CCB-1218/BU	35, 36	CP-40	21	CUT-6NBWH	45	DCD-6BK	14
CCB-1218/YL	35, 36	CP-60	21	CUT-6NSBBL	44	DCH-12	85
CCB-1520/BR	35, 36	CPG-12	8	CUT-6WAWH	45	DCH-200F	71
CCB-1520/YL	35, 36	CS-13	8	CUT-8CKWH	45	DCH-6	85
CCB-1824/GN	35, 36	CS-13A	8	CUT-8COKBL	44	DCH-8	85
CCT-1220	60	CS-30	30	CUT-8NFBWH	45	DCRT	111
CCT-18	60	CST-F	70	CUT-8WASBL	44	DF-FB	28, 33
CCT-2114	60	CST-F/SL	70	CUT-8WASWH	45	DF12L2S	92
CDJ-6	84	CST-H	70	CUT-8WAWH	45	DF12LS	92
CDP-BK	23, 61	CST-H/SL	70	CUT-9BAG/WH	45	DF6L2S	92
CDP-OR	23, 61	CST-HL	70	CUT-DC4	7, 43	DF6LS	92
CHE-4	47	CST-N	70	CUT-HT43	43, 46, 48, 51, 52	DFCT-1	88, 89
CHI-105	26, 73	CST-N/SL	70	CUT-PC4	43, 53	DFCT-2	88, 89
CHI-85	26, 73	CST-Q	70	CUT-PS5	41, 43	DFCT-2/12	88, 89
CHM-1200W	100	CST-Q/SL	70	CUT-S4	9, 43, 52, 57	DFCT-3	88, 89
CHM-2400W	100	CST-S	70	CUT-SS	43, 52	DFD-13	52
CHM-4350W	100	CST-S/SL	70	CUT-ST54	43, 46, 48, 51, 52	DFD-19	52
CHSPIN	84	CST-T	70	CUT-T2	43, 46, 48, 51, 52	DG-10LC	80
CI-105	26, 73	CST-T/SL	70	CUT-T63WH	43, 46, 48, 51, 52	DIGT-1	88, 89
CI-5	26, 73	CST-TT	70	CUT-T83PWH	43, 46, 48, 51, 52	DIV-200F	19
CI-65	26, 73	CTS-1800W	99	CUT-T83WH	43, 46, 48, 51, 52	DIV-200F4	19
CI-85	26, 73	CUA100	21	CVYT120S	91	DMB-13	65
CIF-10	82	CUA55	21	CYL-M	111	DMB-5	65
CIF-12	82	CUT-10CIMWH	45	CYL-SS	111	DMB-8	65
CIF-8	82	CUT-10CKWH	45	<b>D</b>		DMC-4	10
CK-2	100	CUT-10COKBL	44	D-32GSA	49	DMH-3	85
CKT-9	62	CUT-10CWH	45	D42-DK/B	39	DMS-4/PKG	10
CM-24	84	CUT-10ISWH	45	D78-DF/B	39	DNC-6	84
CM-36	84	CUT-10WASBL	44	D78-DS/B	39	DNS1725	6
CMH-1	85	CUT-10WASWH	45	D78-DTS/B	39	DNS2323	6
COF6400WS	90	CUT-12CIMWH	45	D78-SF/B	39	DPE-11	49
COH2800S	90	CUT-12CKWH	45	DB-1520C/GY	111	DPE-13	49
COH3100WPROS	90	CUT-12COKBL	44	DB7-1520GY	111	DPE-15	49
COL-14	55	CUT-12RSWH	45	DBP-2	16, 61	DRE-10	7
COL-5	55	CUT-12SS	44	DBP-3	16, 61	DRE-10NH	7
COL-8	55	CUT-12WASBL	44	DBTN-10	54, 56	DS-6	9, 43, 52, 57
CON-DF/B	39	CUT-12WASWH	45	DBTN-10RB	54, 56	DSL-11	49
CON-DK/B	39	CUT-14SS	44	DBTN-12	54, 56	DSL-13	49
CON-DS/B	39	CUT-3.25/2BK	44	DBTN-14	54, 56	DSL-15	49
CON-LTS/B	39	CUT-3.25/2WH	45	DBTN-8	54, 56	DSM-10	54, 56
CON-SF/B	39	CUT-3.25/CDWH	45	DC-200F	71	DSM-8	54, 56
CON-TBS/B	39	CUT-4/2PCBL	44			DSO-11	49
COQ1750WS	90	CUT-4/2WH	45			DSO-13	49
COT-21	106	CUT-6.25WBBL	44			DSO-15	49

DSO-18	49
DSO-21	49
DTT-13	43, 46, 48, 51, 52
DTT-20	43, 46, 48, 51, 52
DWP-200	19

**E**

EB-12	11
ECS-9	62
ES-2424	113
ES-2436	113
ES-2448	113
ES-3024	113
ES-3036	113
ES-3048	113
ES-3060	113
ES-3072	113
ESB-16	63
EST-240	104
EST-240/PCB	104
EST-240/TH	104

**F**

FAJ-795	82
FAJ-795W	82
FAN-DF/B	39
FAN-DK/B	39
FAN-DS/B	39
FAN-LTS/B	39
FAN-SF/B	39
FAN-TBF/B	39
FAN-TBK/B	39
FAN-TBS/B	39
FB-810	73
FB-917	73
FBR-11571	28, 33
FBR-12651	28, 33
FBR-13558	28, 33
FBR-13612	28, 33
FBR-13912	28, 33
FBR-16315	28, 33
FBR-16834	28, 33
FBS-28	16
FC-165	71
FCB-1218/W	35, 36

FCB-1520/W	35, 36
FCB-1824/W	35, 36
FCCB-1218	35, 36
FCCB-1520	35, 36
FCCB-1824	35, 36
FCD-8	20
FCL-2	41
FCL-4	41
FCS-11	41
FCS-13	41
FF38	58
FFC-12	52
FFC-14	52
FFC12	58
FFC14	58
FFS-DH	51
FGT-1	88, 89
FLS-8	7
FM-20	6
FM-35	6
FPSI-10	31
FPSI-10EX	31
FPSI-12	31
FPSI-12EX	31
FPSI-8	31
FPSI-8EX	31
FT-1	88, 89
FT-2	88, 89
FT-3	88, 89
FVF-1500	23
FVFE1000	23
FVFE1500	23
FVFE2000	23
FW-1200W	103
FW-1200WR	103
FW-1200WR/B	103
FW-1500W	103
FW-1500W/C	103
FWE-10	11
FWE-12	11
FWE-14	11
FWE-16	11
FWE-18	11
FWE-20	11
FWE-24	11
FWE-36	11

**G**

G-600	84
GNP-10	62
GR-100	15
GR-14H	32
GR-18H	32
GREN-62	86
GRG-6	19
GRID-16	101
GRID-24	101
GRID-30	101
GRP-10CG	56, 57 43, 46, 48,
GRP-14T	51, 52
GRP-3PC	46
GRP-4PC	46
GRP-65GP	46
GRP-65YP	46
GRP-7ZP	46
GRP-8OY	46
GRP-8SP	56
GRP-9AC	46
GRP-MCS	46
GRV-8	19
GRY-4	19
GS-25	56, 57
GS1725	6
GS2323	6
GSC-6PT	86
GSK-62	83
GT-20	43, 46, 48, 51, 52
GTC-6P	84
GW-120	97

**H**

H3-10FP	29
H3-12FP	29
H3-14FP	29
H3-8FP	29
H3-BR15	27
H3-BR18	27
H3-BR24	27
H3-BR28	27
H3-FP10	28
H3-FP5	28

H3-FP7	28
H3-SA14	26, 27
H3-SA20	26, 27
H3-SA20C	26, 73
H3-SA26	26, 27
H3-SA34	26, 27
H3-SA40	26, 27
H3-SA60	26, 27
H3-SAU5	26, 27
H3-SAU75	26, 27
H3-SB11	27
H3-SB25	27
H3-SB39	27
H3-SB54	27
H3-SP100	26
H3-SP100C	26, 73
H3-SP12	26
H3-SP120	26
H3-SP120C	26, 73
H3-SP12C	26, 73
H3-SP140	26
H3-SP140C	26, 73
H3-SP16	26
H3-SP160	26
H3-SP16C	26, 73
H3-SP20	26
H3-SP20C	26, 73
H3-SP24	26
H3-SP24C	26, 73
H3-SP32	26
H3-SP32C	26, 73
H3-SP40	26
H3-SP40C	26, 73
H3-SP50	26
H3-SP50C	26, 73
H3-SP60	26
H3-SP60C	26, 73
H3-SP8	26
H3-SP80	26
H3-SP80C	26, 73
H3-SP8C	26, 73
H3-TSP1	28
H3-TSP10	28
H3-TSP10C	26, 73
H3-TSP1C	26, 73
H3-TSP2	27, 31

H3-TSP2C	26, 73	HDCB-1824/BN	35, 36	IND-D120V	99	LD-105	49
H3-TSP3	27, 31	HDCB-1824/BU	35, 36	IND-DR120V	99	LD-12	49
H3-TSP3C	26, 73	HDCB-1824/GN	35, 36	IND-E120V	99	LD-2	49
H3-TSP4	28	HDCB-1824/RD	35, 36	IP-48	12	LD-4	49
H3-TSP4C	26, 73	HDCB-1824/WH	35, 36	IP-60	12	LD-6	49
H3-TSP5	28	HDCB-1824/YL	35, 36	IRT-2	88, 89	LD-8	49
H3-TSP5C	26, 73	HDRP-158	107	IT-13	60	LI-5	20
H3-TSP7	28	HDS-1300W/100	107	IT-17	60	LI-5FP	20
H3-TSP7C	26, 73	HDSK-4	55	<b>J</b>		LI-5WP	20
H3-XCL10	29	HDSK-5	55	JD-1	97	LI-8	20
H3-XCL12	29	HDSK-6	55	JD-2	97	LI-8FP	20
H3-XCL14	29	HER-10FP/4	25	JIG-2	15	LI-8WP	20
H3-XCL7	29	HER-12FP/4	25	JST-31/PKG	54, 56	LIPC-1	48
H3-XCL8	29	HER-14FP/4	25	<b>K</b>		LIPC-12	48
HBC-3/PKG	62	HER-8FP/4	25	KCP-1	15	LIPC-2	48
HBC-5/PKG	62	HFD-85	107	KPT-9D	50	LIPC-3	48
HBC-8/PKG	62	HHS-105	9, 43, 52, 57	KR-12	53	LIPC-4	48
HC-200F	71	HHS-14	9, 43, 52, 57	KST-8	50	LIPC-6	48
HCC-12	85	HL-2	103	KT-25	43, 46, 48, 51, 52	LIPC-8	48
HCC-15	85	HO-30/PKG	51	KT-27	52	LLS-24	15
HCC-18	85	HRP-15	12, 77	KT-64	43, 46, 48, 51, 52	LOF-953	5
HCC-8	85	HRP-18	12, 77	KT-65	43, 46, 48, 51, 52	LR-2	103
HCD-10	21	HS-2PC	41	KT-65P	43, 46, 48, 51, 52	LUT-10	51
HCD-5	21	HVA-2638	80	KVW-48	58	LUT-12	51
HCL-8	53	HWDS-16	11	<b>L</b>		LUT-16	51
HCW-1	112	HWDS-18	11	LAD-24	49	<b>M</b>	
HCW-1KD	112	HZ-808	10	LAD-2PE	48	MAG-12	53
HCW-5	112	HZ-816	10	LAD-2SO	48	MAG-18	53
HCW-5KD	112	HZ-832	10	LAD-32	49	MAN-38	58
HD-26	106	HZ-864	10	LAD-3PE	48	MAT-3512BK	112
HD-36	106	<b>I</b>		LAD-3SO	48	MAT-3534BK	112
HD-48	106	ICC-5CL	84, 63	LAD-4PE	48	MAT-35TC	112
HDC-3	55	ICH-8	15	LAD-4SO	48	MBR-3PC	15
HDCB-1218/BN	35, 36	ICS-10	47	LAD-6PE	48	MBS-16	15
HDCB-1218/BU	35, 36	ICS-12	47	LAD-8PE	48	MC-7	15
HDCB-1218/GN	35, 36	ICS-16	47	LAD-8SO	48	MC240-DF/B	40
HDCB-1218/RD	35, 36	ICS-20	47	LAF-7	20	MC240-DK/B	40
HDCB-1218/WH	35, 36	ICS-24	47	LCH-2	85	MC240-DS/B	40
HDCB-1218/YL	35, 36	ICS-30	47	LD-1	49	MC240-LTS/B	40
HDCB-1520/BN	35, 36	ICS-40	47			MC240-SF/B	40
HDCB-1520/BU	35, 36	ICS-6	47			MCS-4	10
HDCB-1520/GN	35, 36	ICS-8	47			MIN-1/2	86
HDCB-1520/RD	35, 36	IDW-940W	103			MLB-2/PKG	57
HDCB-1520/WH	35, 36	IND-A120V	99			MLS-3	62
HDCB-1520/YL	35, 36	IND-C208V	99			MLS-4	62

MLS-BL	62	OPD-14	60	PL-DF/B	40	PWE-14	11
MM-138	58	OPD-16	60	PL-DK/B	40	PWE-16	11
MS-2000/B	83	OPD-18	60	PL-DS/B	40	PWE-18	11
MS-3000	83	OPD-22	60	PL-LTS/B	40	PZ-18720	75
MSQ-2	86	OT-2	88, 89	PL-PTS/10/B	41	PZ-19029	75
MSS-4	10	OT-3	88, 89	PL-SF/B	40	PZ-2512	76
MT-2	88, 89	OYC-1/PKG	63	PL-TBS/10/B	41	PZ-2814	76
MT-3	88, 89	OYC-2/PKG	63	PLCS-777	15	PZ-3512	76
MTA-10	57	<b>P</b>		PMB-13	53	PZ-7007E	77
MTT-13	79	PA-36	12	PMB-18	53	PZ-DD5704	77
MTT-17	79	PA-42	12	PMB-24	53	PZ-DRPE800	77
MW-42	58	PA-48	12	PMR-18	56	PZ-DRPE878	77
<b>N</b>		PAB-20	11	PMR-24	56	PZ-TP10	75
NCD-64	23, 61	PAM-LK	40	PO-18	100	PZ-TP12	75
NEP-5	21	PAM-LTS	40	PO-22	100	PZ-TP14	75
NL-0	48	PAM-SF	40	PP-200F1	68, 69	PZ-TP15	75
NL-1	48	PASTA-4	32	PP-200F2	68, 69	PZ-TP16	75
NL-2	48	PASTA-INS	32	PP-200F4	68, 69	PZ-TP18	75
NL-3	48	PBD-12CL/PKG	86	PP-200F6	68, 69	PZ-TP19	75
NL-4	48	PBD-24CL/PKG	86	PP-200H2	68, 69	PZ-TP20	75
NSK-8LH	83	PBD-8CL/PKG	86	PP-200H4	68, 69	PZ-TP8	75
NSL-2616	111	PCM-8	106	PP-200H6	68, 69	PZST-4	75
NSL-2616CG	111	PCM-8C	106	PP-605	47	PZST-7	75
NST-11BK/ROUND	17	PCM-8L	106	PP-605	47	PZST-9	75
NST-11BR/ROUND	17	PCM-8LC	106	PR-15	56	PZT-3612	76
NST-14BK/ROUND	17	PCV1012	62	PRA-3515	12, 77	PZT-3614	76
NST-14BR/ROUND	17	PEP-12	86	PRA-3518	12, 77	PZT-4212	76
NST-16BK/ROUND	17	PEP-18	86	PS-13	63	PZT-4214	76
NST-16BR/ROUND	17	PEP-8	86	PS-16	63	PZT-4218	76
NST-2025BK/OVAL	17	PF-12	52	PS-2	63	PZT-4220	76
NST-2025BR/OVAL	17	PF-21	52	PS-20	63	<b>O</b>	
NST-2227BK/OVAL	17	PFB-1520	111	PS-6	63	QF-6	84
NST-2227BR/OVAL	17	PFB-1520C	111	PS-6607	53	<b>R</b>	
NST-2429BK/OVAL	17	PGN-12	61	PS-9	63	RAG-6	82
NST-2429BR/OVAL	17	PGN-12	61	PSC-5	9, 43, 52, 57	RC-0030	101
<b>O</b>		PGN-21	61	PSJ-12PT	86	RC-E30	101
OAG-12	82	PGN-21	61	PSJ-12SF	86	RC-E50	101
OAG-8	82	PGN-32	61	PSS-64GB	16, 61	RD-102	6
OBB-128	83	PGN-32	61	PT-1	88, 89	RDS-7	55
OBB-1611	83	PGN-72	61	PT-2	88, 89	RES-48PK	85
OC-24	62	PGN-72	61	PT-3	88, 89	RFT-1	88, 89
OMS-14/BU	79	PH-2	32	PT-6/PKG	50	RG-05	107
OMS-14/GR	79	PHK-2L	16, 61	PUT1800HD	91	RG-05/COV	107
OMS-14/OR	79	PHK-3L	16, 61	PUT1800MD	91	RG-07	107
OMS-14/RD	79	PL-BLS/B	40	PWE-10	11	RG-07/COV	107
				PWE-12	11		

RG-09	107	SEP-10BK	50	SMT-2	86	STA-30	65
RG-09/COV	107	SEP-10BU	50	SMT-3	86	STK-249/B	83
RMS-1/4	32	SEP-10GN	50	SP-20BK	23	STK-858/B	83
RMS-2/4	32	SEP-10RD	50	SP-20WH	23	STP-10GB	61
RMS-3/4	32	SEP-10YL	50	SP-40BK	23	STP-10GB	61
RMT-1	88, 89	SEP-12BK	50	SP-40WH	23	STP-32GB	61
ROL-1	19	SEP-12BU	50	SP-64BK	23	STP-32GB	61
ROP-13	12, 77	SEP-12GN	50	SP-64WH	23	STP-64GB	61
ROP-15	12, 77	SEP-12RD	50	SPA-8	47	STP-64GB	61
ROP-18	12, 77	SEP-12YL	50	SPB-5	7	STS-5	84, 63
RPF-20	12, 77	SER-7	57	SPH-13PE	49	SUG-4BK	84
RS-10	9, 43, 52, 57	SG-811E	93	SPH-13SL	49	SV-1200W	101
RS-14	9, 43, 52, 57	SG-811E/F	93	SPH-13SO	49	SVI-105	73
RW-E50	103	SG811BS	93	SPIL-21	73	SVI-5	73
RW/MS-9	41	SG811EFBS	93	SPS-10	27, 31	SVI-65	73
RW/PF-11	41	SG811ES	93	SPS-2	27, 31	SVI-85	73
RW/PS-11	41, 43	SG811FS	93	SPS-35	27, 31	SWB-28	16
RW/SL-12	41	SG813BS	93	SPS-45	27, 31	SWB-962	83
RW/SO-12	41	SGM-1	97	SPS-75	27, 31	SWB-9R	83
<b>S</b>		SGM-2	97	SQS-7	55	SWS-9	55
S-117	9, 43, 52, 57	SGTN-10	54, 56	SSCH-4	14	SXS-7PC	32
SAL-2800W	100	SGTN-8	54, 56	SSCH-6	14	SZ-10	82
SAL-4000W	100	SHR-2	84	SSM-10	54, 56	SZ-11	82
SAN-BP60CL	16, 61	SIB-40	63	SSM-5	54, 56	SZ-12	82
SAN-P35	16, 61	SIE-12	6	SSM-8	54, 56	<b>T</b>	
SAN-P63	16, 61	SIE-16	6	SSNH-357	84	TBL-7	50
SAP-566	73	SIZ-118P	82	SSP-100	30	TBS-8FE/B	41
SAP-88	73	SIZ-711P	82	SSP-12	30	TEN-12	57
SBL-13D	65	SIZ-813H	82	SSP-16	30	THD-113	57
SBL-16	65	SK-1149/B	83	SSP-20	30	TOP-MUSH	86
SBL-1D	65	SK-16HG	83	SSP-24	30	TOW-1	86
SBL-20	65	SK-500W	103	SSP-32	30	TPC-4	43, 53
SBL-2D	65	SKEW-10	83	SSP-40	30	TPP-12CL	84
SBL-30	65	SKEW-12	83	SSP-60	30	TPP-16CL	84
SBL-3D	65	SKEW-16	83	SSP-8	30	TPP-5CL	84
SBL-4D	65	SKEW-8	83	SSP-80	30	TPP-8CL	84
SBL-5D	65	SL-10	109	SSR-6P	63	TPP-9CL	84
SBL-8D	65	SL-12L	109	SSS-4	63	TRN-14H	60
SBS-4GB	84, 63	SL-80	43, 46, 48,	SST-1418	60	TRN-16H	60
SCD-1	60	SL-9	51, 52	SST-8	50	TRN-18H	60
SCD-2	60	SLVFE1000	23	ST-120/2	104	TSB-10	83
SCD-3	60	SLVFE750	23	ST-120/3	104	TSB-6	83
SCO-250	51	SMT-1	86	ST-240/4	104	TSB-8	83
SCT-11	60	SMT-199	88, 89	ST-80	43, 46, 48,	TST-2B	16
SCT-9	60				51, 52	TUF-10	51

TUF-12	51	WCS-S	20
TUF-16	51	WMD-8/PKG	15
TUX-3228BK	80	WMSB-16CL	86
TWH-2	57	WMSB-24CL	86
<b>U</b>		WMSB-32CL	86
UB-289	22	WP-2	23, 97
<b>V</b>		WPG-1018	32
V-144	5	WPG-1217	32
V-144C	5	WPG-1624	32
VAP-4025	80	WPG-510	32
VEN-DF/B	40	WPG-810	32
VEN-DK/B	40	WPM-24	56
VEN-DS/B	40	WSI-84	57
VEN-LTS/B	40	WSK-12	55
VEN-SF/B	40	WSK-6	55
VP-6/B	47	WSK-60/B	83
VS-300	109	WSK-7	55
<b>W</b>		WSK-8	55
W42-DK/B	40	WSK-9	55
W42-DK/P/B	40	WSS-4	43, 52
W50-DK/B	40	WSS-7/B	43, 52
W53-DF/B	38	WT-2424-E	113
W53-DS/B	38	WT-2436-E	113
W53-LTS/B	38	WT-2448-E	113
W53-OF/B	38	WT-3048-E	113
W53-SF/B	38	WT-3060-E	113
W54-BLS/B	38	WT-3072-E	113
W54-DF/B	38	WTS-32	16
W54-DS/B	38	WTS-38	16
W54-LTS/B	38	WU-10	82
W54-SF/B	38	WU-11	82
W57-BRY/B	41	WU-12	82
W57-GL/B	41	WWP-10K	83
W57-TBS/9/B	41	<b>X</b>	
W57-TBS/B	41	XCL-10FP/4	25
WA-1123BK	80	XCL-12FP/4	25
WB-100	97	XCL-14FP/4	25
WB-40	97	XCL-7FP/4	25
WB-8	16	XCL-8FP/4	25
WBB-1307	36	XHT-10	50
WBF-4	16	XHT-12	50
WBR-14	57	XHT-16	50
WCS-7	15	<b>Z</b>	
WCS-777	15	ZZD-12	47
		ZZD-16	47





Serving the  
Foodservice  
Industry  
Since  
1952

**ADCRAFT**®

3355 Enterprise Ave #160, Weston, FL 33331  
954.202.7419 | [admiralcraft.com/adcraft](http://admiralcraft.com/adcraft)