



Stainless Steel Food Service Equipment

Product Overview



50 Ranick Drive East
Amityville, NY 11701



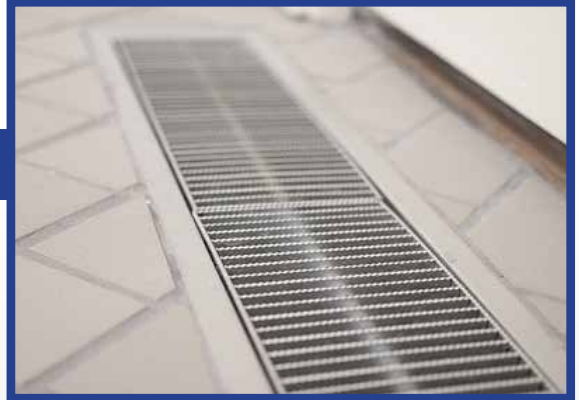
800-221-5644

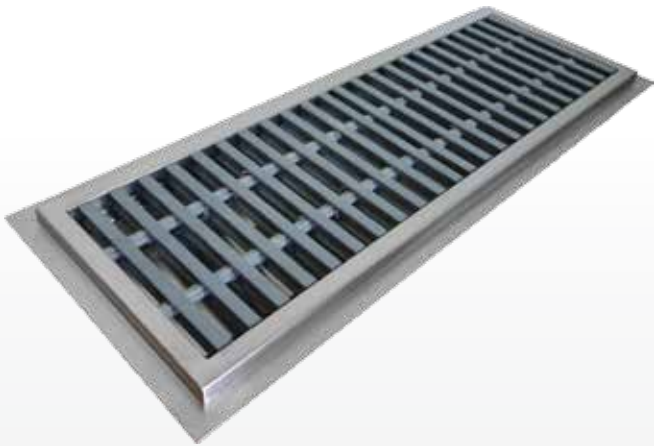


info@imcteddy.com



www.imcteddy.com





CFT Floor Trough - 16GA, 4" Deep

- 16GA Type 300 Series Stainless Steel
- Integral Coved Corners
- Creased Towards Waste Outlet
- Beehive Strainer
- Includes 4" OD x 3" Long Tailpiece
- Any Style Grating May Be Used
- Picture Shown with PFG Fiberglass Grating



FT Floor Trough - 14GA, 4" Deep

- 14GA Type 300 Series Stainless Steel
- Integral Coved Corners
- Pitched $\frac{1}{4}$ " per Foot Towards $6\frac{1}{2}$ " Waste
- Includes 4" OD x 3" Long Tailpiece
- Perforated Waste Basket Included
- May Not Be Less Than 11" Wide
- Picture Shown with SG Grating



ASFT Floor Trough - 14GA, 6" Deep

- 14GA Type 300 Series Stainless Steel
- Integral Coved Corners
- Integral Pitch Towards $6\frac{1}{2}$ " Waste Outlet
- Includes 4" OD x 3" Long Tailpiece
- Perforated Waste Basket Included
- Anti-Spill Feature Directs Splashing Water to Inside of Trough
- May Not Be Less Than 11" Wide
- Picture Shown with SG Grating



LFT Floor Trough - 14GA, 4" Deep

- 16GA Type 300 Series Stainless Steel
- Ledgeless Design - up to 18% More Drainage
- Elimination of 1½" Ledge Makes the Trough Slip Proof
- Integral Pitch Towards 6½" Waste Outlet
- Includes 4" OD x 3" Long Tailpiece
- Perforated Waste Basket Included
- Picture Shown with SG Grid Design Grating



FDSS Floor Drain Sump Sink

- 16GA Type 300 Series Stainless Steel
- 12" x 12" Square
- 4" Deep
- Bottom is Creased to 4" OD Waste Outlet with Tailpiece & Strainer
- Pictures Shown with SQ Grating



TRE Trench Drain

- 14GA Type 300 Series Stainless Steel
- 4" Wide x 4" Deep x Any Length Starting at 2ft
- 2" Diameter Drain with Perforated Strainer Located at One End or as Needed
- Bottom Is Creased to 2" OD Waste Outlet with Tailpiece
- Picture Shown with PFG-ADA Grating



S Series Shelves

- Double Folded Shelf Edges are Turned Down 90° & in 180°
- S/S Gussets are Welded to the Underside of Each Edge of Shelf & Secured to Posts with Screws
- Posts Are 1 5/8" OD Tubes, 16GA S/S with Caps & Adjustable S/S Feet
- Units Ship Knock-Down
- Picture Shown with Louvered Shelving & Optional Casters (solid shelves also available)
- Casters Add 5" to Overall Height of Shelving Units



ADA-WS Hand Sink

- 16GA Type 300 Series Stainless Steel
- Includes 6" Apron, Mounting Bracket & Clips with Hardware
- Integral ITD Towel Dispenser for Easy Access
- 10" Backsplash
- Any Sink Can Be Made Security
- Bowl Size: 16" x 14" x 4"
- Overall Size: 24" x 22" x 31 7/8"



CMS Hand Sink

- Combination Hand & Utility Sink with Double Pantry Faucet & Pot Filler
- 16GA Type 300 Series Stainless Steel
- Upper Sink – Used for Hand Washing & for Small Tools or Accessories
- Lower Sink – Used for Cleaning Cans/Containers, Buckets or Ware/Utensil Containers Individually
- Bowl Size: 14" x 10" x 5 1/2"
- Utility Sink Size: 18" x 18" x 5"
- Overall Size: 25" x 20" x 43"
- Includes Faucets and Pot Filler



WSMS Multi-Station Hand Sink

- 16GA Type 300 Series Stainless Steel
- Fully Welded with Rolled Front & Ends
- 12GA Stainless Steel Brackets at Each End, Welded to Bowl & Attached by Screws to the Wall
- Optional Tubular Adjustable Legs
- 10" Backsplash



PHS Portable Hand Sink

- Constructed of 16GA Type 300 Series Stainless Steel Sink, Countertop & 18GA Body
- Sink Bowl Is 11½" x 9½" x 5½" Deep with Covered Corners & Built-In Pitch to 1½" Waste Outlet
- Double Pan Hinged Door Is 18GA with Integral Towel Dispenser
- Includes Hot Water Heater, 5 Gallon Removable Fresh Water Tank & 7 Gallon Removable Waste Water Tank
- Overall Dimensions are 21" Wide x 24" Long x 38" High



CSW Series Hand Sinks

- 20GA Stainless Steel Apron
- Fully Welded with Integral Apron
- Designed for Institutional & Commercial Applications
- Sink Bowl Measuring 10" x 14" x 5"
- Order Faucets & Other Accessories Separately



WS-CK Corner Hand Sink

- 16GA Type 300 Series Stainless Steel
- Backsplash is 7 $\frac{3}{4}$ " High with 1" Return to Wall
- Bowl Size: 9 $\frac{1}{4}$ " x 11 $\frac{1}{2}$ " x 6"
- Overall Size: 20" x 20" x 14 $\frac{3}{4}$ "
- 4" Center Splash Mounted Faucet with Wrist Handles
- Flat Edges
- 7" Integral Apron Conceals All Plumbing
- Fastens to Wall with Rear Flange & "Z" Strip



FS-D Floor Sink

- 16GA Type 300 Series Stainless Steel
- Bowl Size: 24" x 18" x 12" Deep
- Overall Size: 27" x 21" x 15 $\frac{1}{2}$ "
- Integrated Full-Height Apron
- Coved Corner Sink Bowls
- Built-In Pitch to 2" IPS Outlet
- Notched Out Front Eliminates the Need to Lift Heavy Buckets & Spillage of Dirty Water onto the Floor



FS-AS Floor Sink

- 16GA Type 300 Series Stainless Steel
- Anti-Splash Utility Sink Is Designed like an Anti-Splash Trough
- Bowl Size: 16 $\frac{1}{2}$ " x 22 $\frac{1}{2}$ " x 7" Deep
- Overall Size: 21" x 27" x 10 $\frac{1}{2}$ "
- Integrated Full-Height Apron
- Coved Corner Sink Bowls
- Integral Anti-Splash Design Keeps Water in the Sink & off the Floor
- Built-In Pitch to 2" IPS Outlet



MSC Cabinet

- 18GA Type 300 Series Stainless Steel with Double Pan Door(s)
- 5" Deep Sink with a 4" Waste Outlet
- Utility Spray Hose with Brush & (2) Two Mop Holders Are Included with the Unit
- Hinged Stainless Steel Doors Fully Enclose Cabinet
- Cabinet Base Is Fully Enclosed & Can Be Easily Levelled in the Field
- Overall Size: 30" Wide x 24" Deep x 84" High



CMSC-R Cabinet

- 18GA Stainless Steel with (1) One Hinged Door on the Sink Side
- Upper Section Has (1) Fixed Shelf for Supplies
- 18½" Long x 19" Wide Cabinet Space with (2) Fixed Shelves
- Ramp for Easy Storage of Mop Bucket
- Overall Size: 30" Wide x 24" Deep x 84" High
- Picture Shown with Optional Top Doors & Storage Door



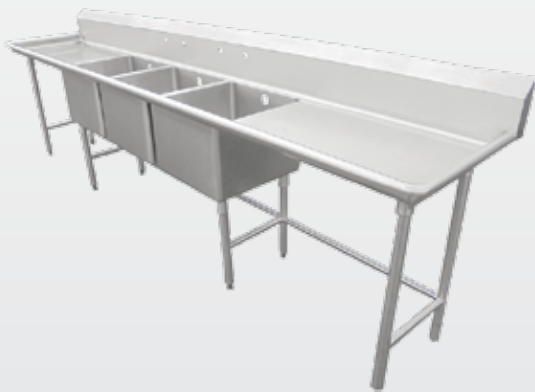
DL20-1 Can Washer

- 16GA Type 300 Series Stainless Steel
- Coved Wash Basin with 1" OD Tubular Equipment Supports
- 12" Backsplash
- Perforated Scrap Drawer Collects Solid Waste for Disposal
- Foot Pedal Valve Controls Heavy Duty Nozzle Spray Head with a 360° Revolving Cleaning Pattern
- Ideal for Cleaning & Washing All Large & Medium Sized Cans/Pots



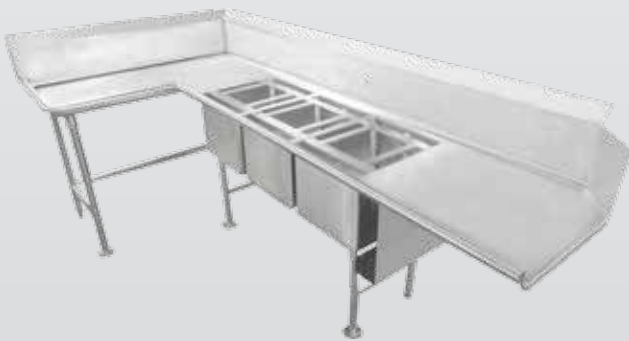
SCS-2 Scullery Sink

- 14GA or 16GA Type 300 Series Stainless Steel
- Top & 2 Compartment Sink Bowls Have 1" Covered Radius
- 10" Backsplash - Other Sizes Available
- S/S Legs & Gussets with Adjustable Bullet Feet
- Integral Drainboards Pitched to Sink
- Additional Legs Provided for Drainboard at 30" & Over
- 14" Deep Bowls
- 3" Raised Rolled Edge on 3 Sides
- Crossrails Come Standard
- For Left Side Drainboard, Replace "R" with "L" in Model #
- Picture shown w/ Left Drainboard, Faucet & Lever Drains w/ Overflow



SCS-3 Scullery Sink

- 14GA or 16GA Type 300 Series Stainless Steel
- 3 Compartment Sink Bowls Are Coved at All Corners & Pitched to 3½" Waste Outlet
- 10" Backsplash
- S/S Legs & Gussets with Adjustable Bullet Feet
- Bowls Available in Different Sizes & Depths
- Picture Shown w/ Left & Right Drainboards & Overflow Holes



Corner Scullery Sink

- 14GA or 16GA Type 300 Series Stainless Steel
- (3) Compartment Corner Sink to Save Space
- Sink Bowls Are Coved at All Corners & Pitched to 3½" Waste Outlet
- 10" Backsplash
- S/S Legs & Gussets with Adjustable Bullet Feet
- Bowls Available in Different Sizes & Depths
- Picture Shown w/ Right & Left Drainboards, Rack Guide & Cutting Board Rack. Right Drainboard Modified to Fit into Dishwasher.



SCDT Clean Dishtable

- 14GA or 16GA Type 300 Series Stainless Steel
- Tops Have 1" Coved Radius
- 8" High Backsplash - Other Sizes Available
- 1⁵/₈" S/S Legs & Gussets with Adjustable Bullet Feet
- Picture Shown w/ Rolled Edges, 8" Backsplash & Undershelf



SCSD Soiled Dishtable

- 14GA or 16GA Type 304 Stainless Steel
- Pre-Rinse Sink Is 20" x 20" x 5" Deep
- 8" High Backsplash
- 1⁵/₈" S/S Legs & Gussets with Adjustable Bullet Feet
- Scrap Basket Included
- Picture Shown w/ 10" Backsplash, Pre-Rinse Sink & Pass Thru Shelf



WTB Worktable

- 14GA or 16GA Type 300 Series Stainless Steel Top
- 14GA Top with 16GA Continuous Reinforcements
- Includes Square Edge, 18GA Undershelf & 6" Backsplash
- Tables 84" & Longer Provided with (6) Legs
- Picture Shown w/ Optional Drawer & Flanged Legs



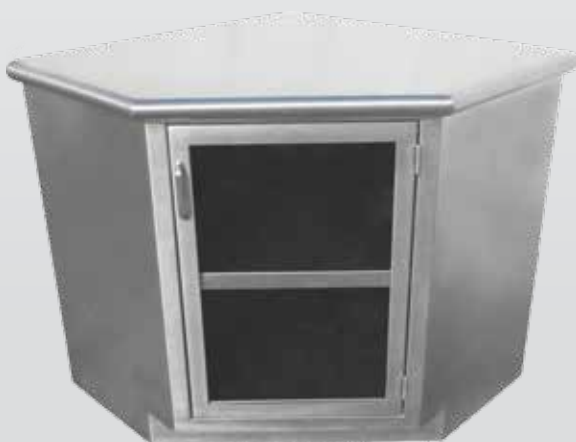
SMTS Slicer Table

- 14GA Type 300 Series Stainless Steel Top
- Slides Are 14GA Stainless Steel Welded to Legs
- Table Features Legs with Welded Cross-rails
- Unit Also Features Stainless Steel Gussets & 5" Heavy Duty Casters, (2) with Brakes
- Custom Sizes Available
- Picture Shown with Optional Undershelf



SC Cabinet

- 18GA Type 304 Stainless Steel Body
- 84" High with Flat Top (Shown with Optional 6" Sloped Top)
- Provided with (5) Adjustable Shelves
- Optional Hinged Doors – Sliding, Solid or Glass



BC-CHG Corner Cabinet

- 16GA Type 300 Series Stainless Steel, 16GA Stainless Steel Top
- (1) 18GA Adjustable Shelf
- Open Front or with Door Available
- Built-In 3" Toe Space
- Optional Hinged Doors Are 18-Gauge Stainless Steel with Pull Handles
- Cabinets Are Fully Welded & Brushed to a #4 Finish
- Picture Shown with Optional Rolled Edge & Hinged Glass Door



OC-CWG Corner Wall Cabinet

- 18GA Type 300 Series Stainless Steel with Flat or Sloped Top
- 36" High
- Interior is Fitted with (1) S/S Shelf, Fixed
- Open Front or with Door Available
- Built-In 3" Toe Space
- Optional Hinged Doors Are 18-Gauge Stainless Steel with Pull Handles
- Cabinets Are Fully Welded & Brushed to a #4 Finish



OC Cabinet

- 18GA Type 304 Stainless Steel w/ Sloped Top
- 36" High
- Flush, Open Front Cabinet – Top Rail, Sides, Rear & Bottom Are S/S Seamless Construction
- Interior Is Fitted with (2) S/S Shelves, Adjustable & Removable
- Picture Shown with w/ Optional Glass Hinged Doors & Door Lock



AC Accessory Cabinet

- 18GA Type 300 Series Stainless Steel
- (2) Adjustable Shelves
- 4" Deep
- Optional Lock Box Attachment
- Includes Stainless Steel Solid Door(s)
- Optional Mirrored Door Available
- Wall Mounted



OC-SEC Cabinet

- 18GA Type 300 Series Stainless Steel
- Standard Sloped Top
- (3) 18GA Fixed Shelves
- Intermediate Shelf Provided with Hooks to Hold Special Tools
- 14GA Double Pan Doors with Pull Handle & Key Lock with Central Locking Hasp



WRC-2 Waste Receptacle

- 16GA Type 300 Series Stainless Steel
- 42" High
- Cutouts for Waste and/or Recyclables
- 4" Casters, (2) with Brakes
- 18GA Double Pan Hinged Doors
- 2" High Backsplash
- Includes Plastic Waste Cans



IBP-1 Mobile Ice Bin

- 18GA Type 300 Series Stainless Steel
- All Welded Insulated Double Wall Construction
- 4" Casters, (2) Swivel, (2) Fixed with Brakes
- Hinged Cover
- S/S Push/Pull Handle with Donut Bumpers
- Includes Ice Scooper
- Fits Under Standard Worktables to Save Space & for Easy Access



ITRC Mobile Ice Cart

- 18GA Type 300 Series Stainless Steel
- All Welded Insulated Double Wall Construction
- 4" Casters, (2) Swivel, (2) Fixed
- Hinged Top Cover
- S/S Push/Pull Handle with Donut Bumpers



CNC Condiment Counter

- 16GA Type 300 Series Stainless Steel Top
- 14GA Type 300 Series Stainless Steel Frame
- 10" Apron Welded to Framework
- Silverware Holder Is All Welded 18GA S/S with Provisions for Cutlery Cylinders
- Casters Are 5" Heavy Duty Ball Bearing Swivel Casters, (2) with Brakes
- 18GA S/S Full Size Undershelf Welded to Uprights



BVC Beverage Counter

- 16GA Type 300 Series Stainless Steel
- Features a Trough for Spilled Liquids
- Stainless Steel Louvered Grating and 1" Drain
- Shown with Optional Backsplash, End Panels, Doors & Undershelf



Established in 1955, IMC/Teddy is a Consultant/Designer driven manufacturer of Food Service Equipment. We welcome product recommendations & upgrade suggestions from you. Our mission is to introduce new & innovative products in food service equipment & storage/handling systems.

IMC only uses 300 series stainless steel which is recommended for high corrosion resistance & uniformity of finish. Every IMC product will perform its intended function even in the most punishing work environment.

Production begins with Laser & CNC machine work & the final product is finished with a non-directional brushed satin. The finish has the ability to hide & blend scratches for many years. Each product is then carefully inspected & protected for delivery to the customer. All products are 100% manufactured in USA.

For a complete catalog or the representative nearest to you, visit www.imcteddy.com or contact us below.



50 Ranick Drive East
Amityville, New York 11701
Tel: 800-221-5644
Fax: 631-789-3633
info@imcteddy.com
www.imcteddy.com

